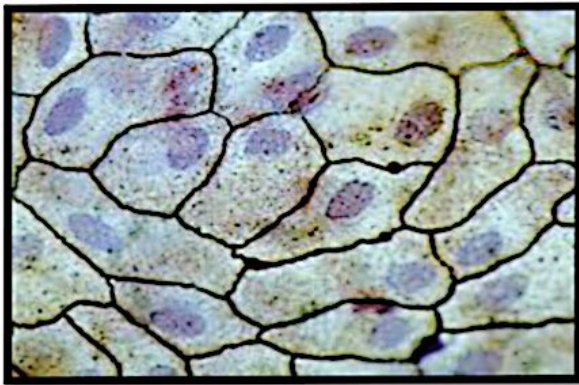


Lab:3

Cell shape

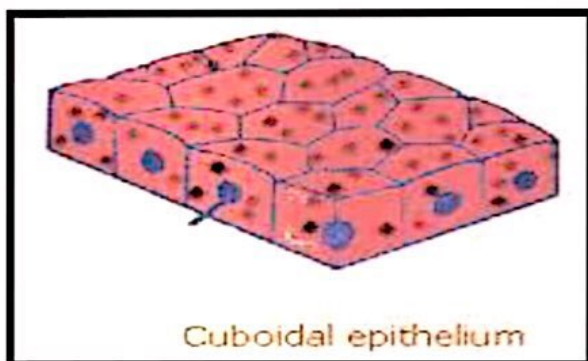
1- Squamous shape / Irregular – shaped cell forming a continuous surface with small nuclei.

[ex. Squamous epithelial tissue in Skin , mouth].



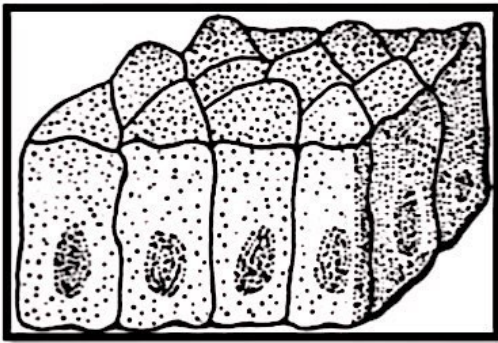
2- Cuboidal shape / the cells appear square & the nuclei is in the middle of cell.

[ex. Cuboidal epithelial tissue in c.s in Kidney , Urinary bladder & pancreas].



3- Columnar shape / is similar to Cuboidal epithelium except that the cell are taller & appear columnar in section, the nuclei may be located towards the base.

[ex. Columnar epithelial tissue in Stomach , Trachea]



4- Spindle cell / the cell elongated spindle shaped with pointed end.

[ex. Smooth muscle]

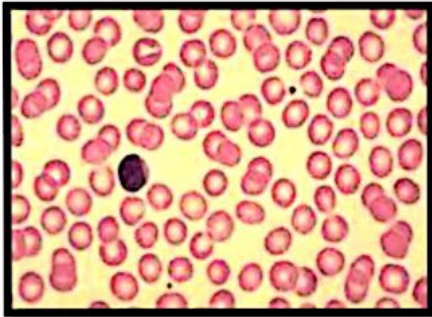


5- Stellate (Asteriodal shape) [ex. Neuron]

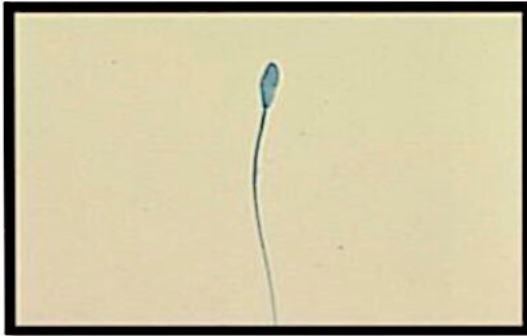


6- Circular (Discoid shape)

[ex. Red blood cell(R.B.C) in Human blood]



7- Sperm shape [ex. Rabbit sperm]



8- Amoeboid shape [ex. Amoeba]

