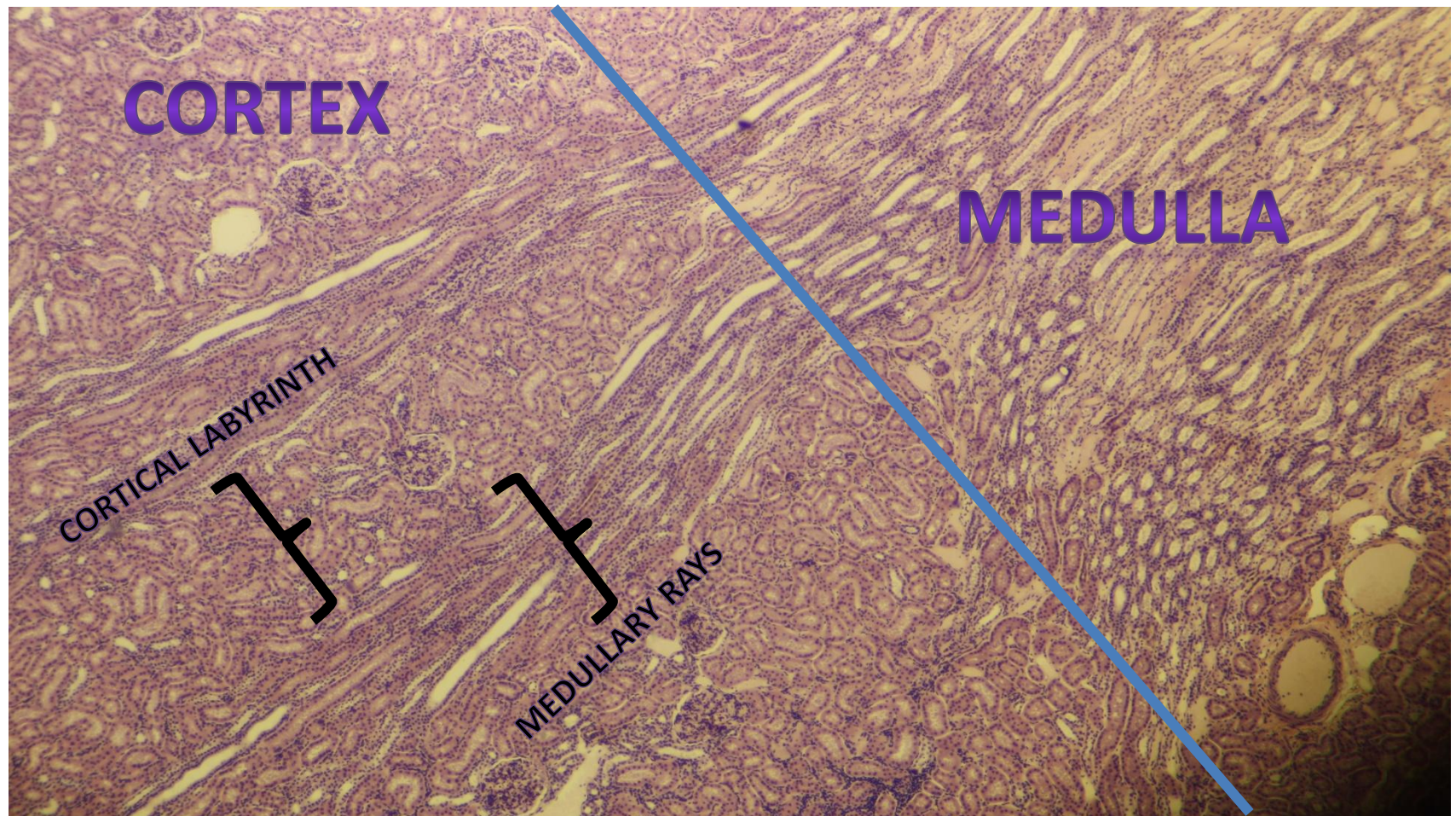
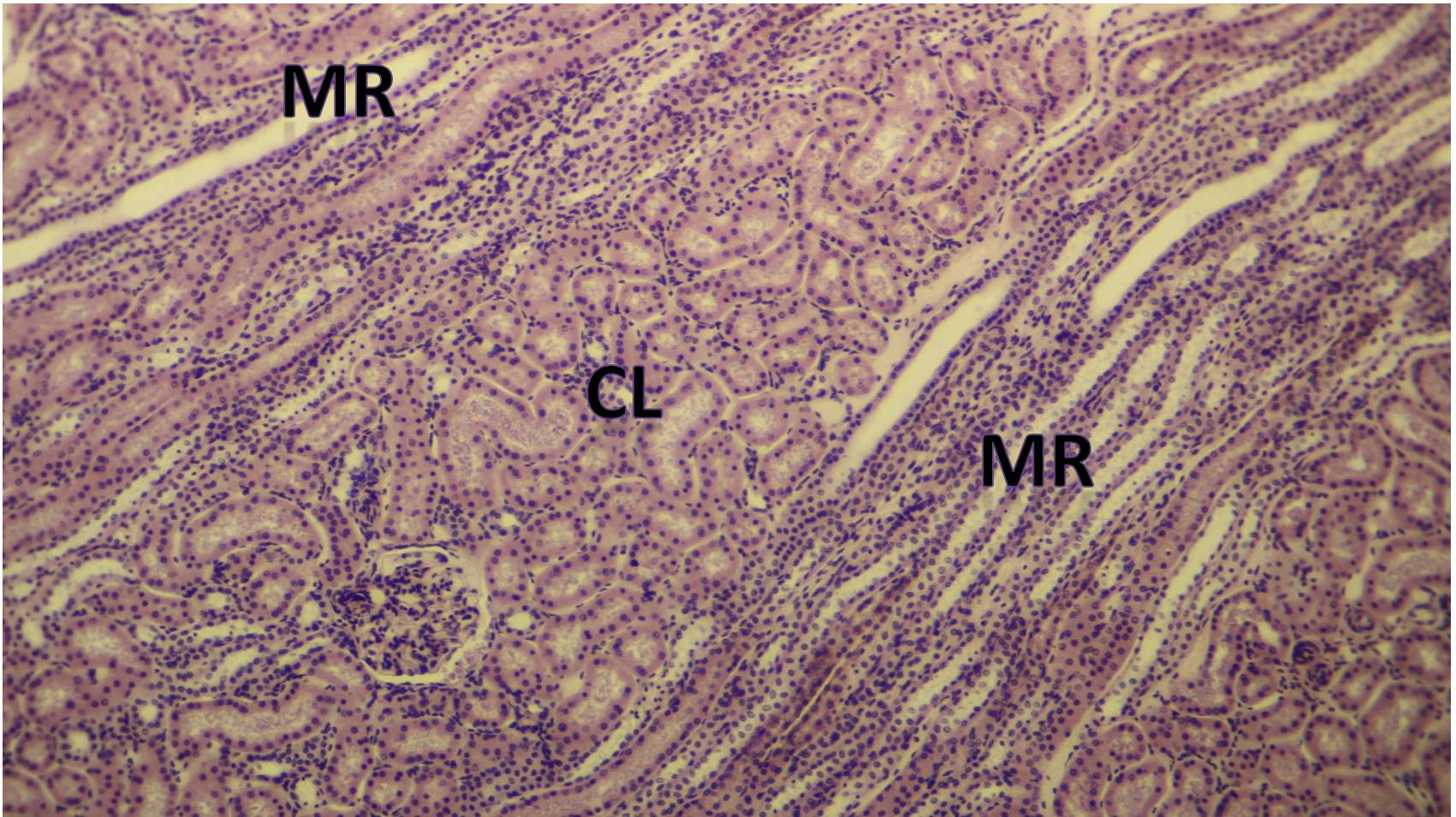


Renal system

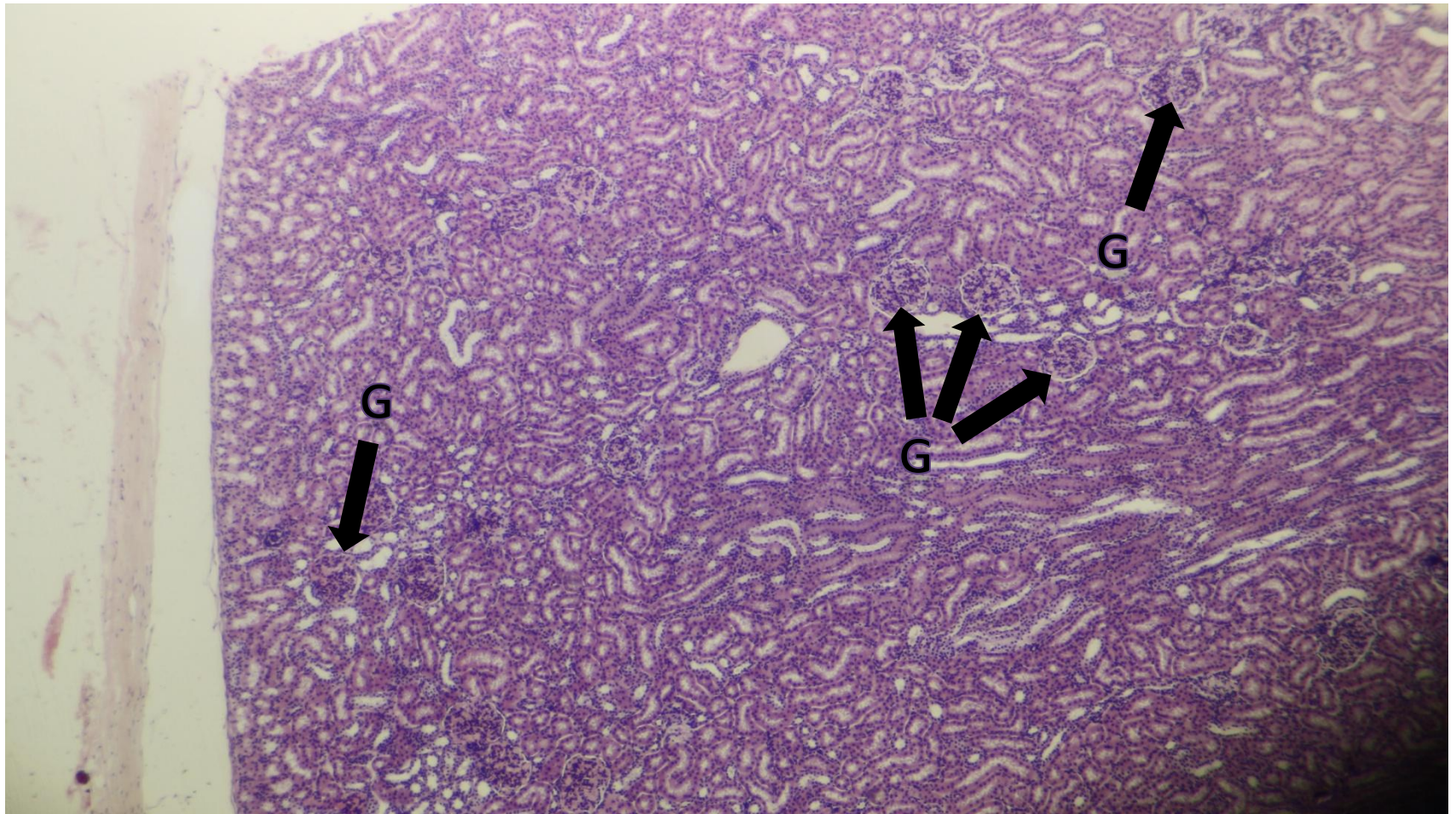
Kidney- Corticomedullary junction



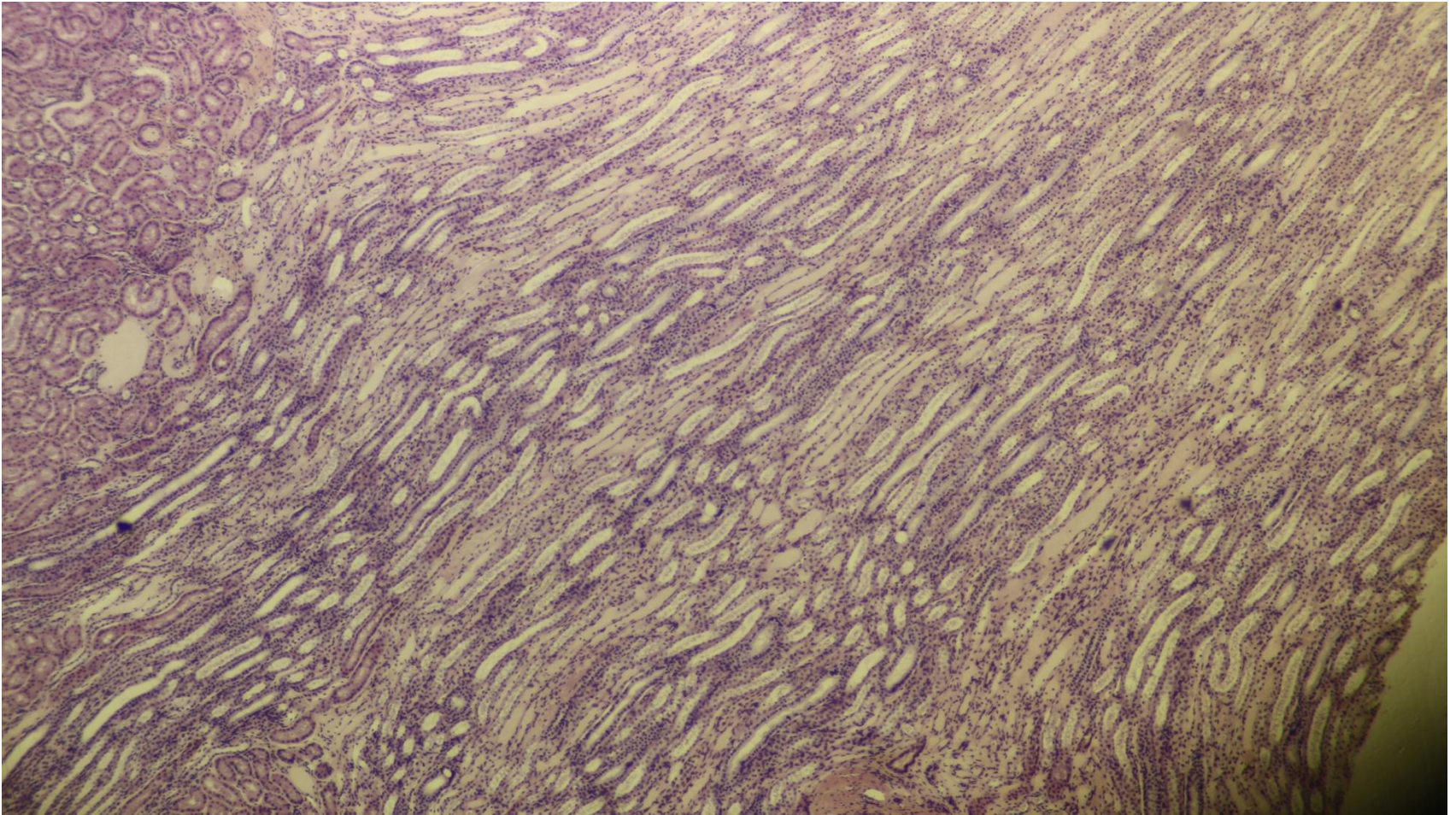
Two medullary rays(MR) and cortical labyrinth (CL) in between



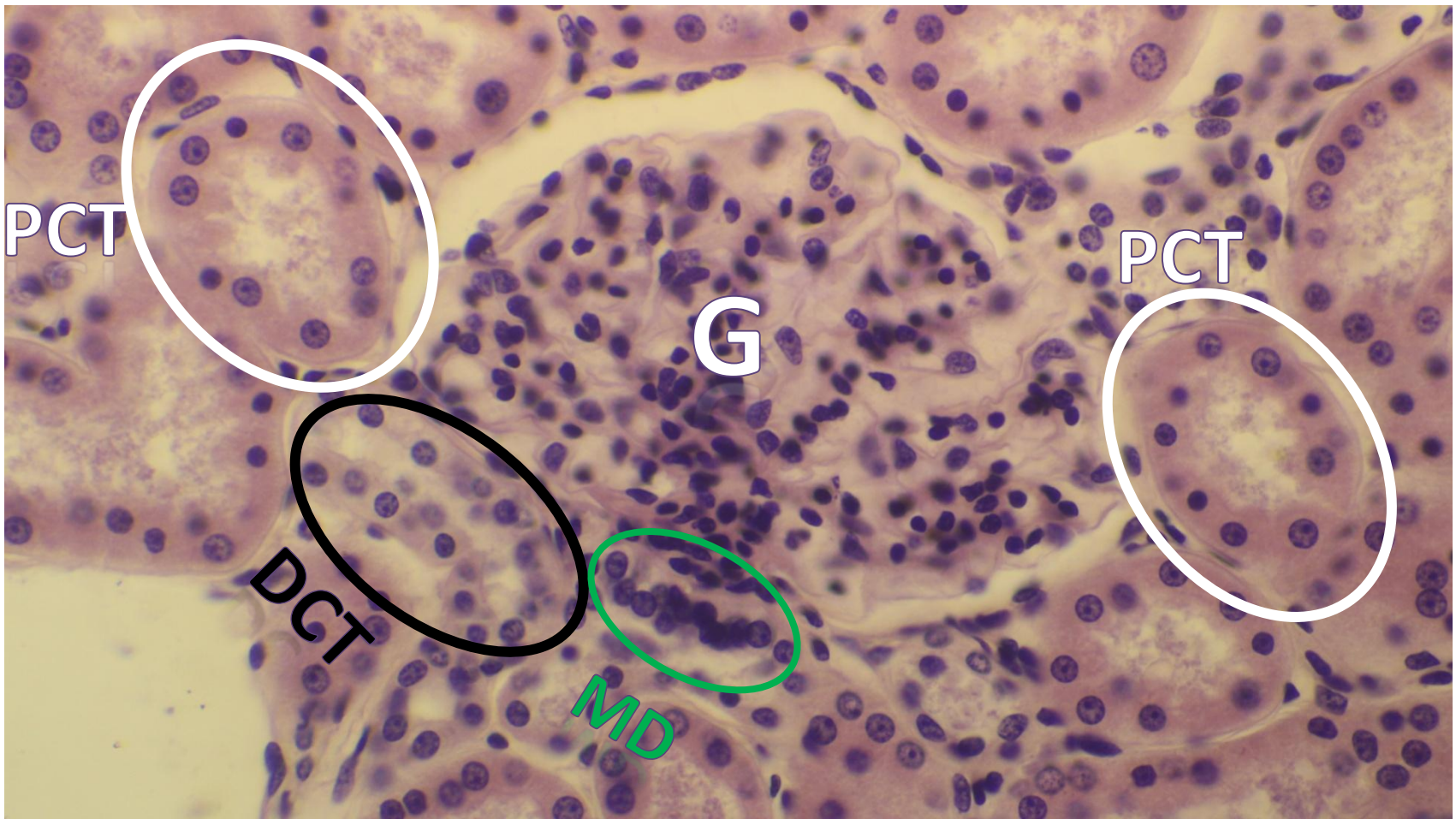
Cortex showing glomerulus (G)

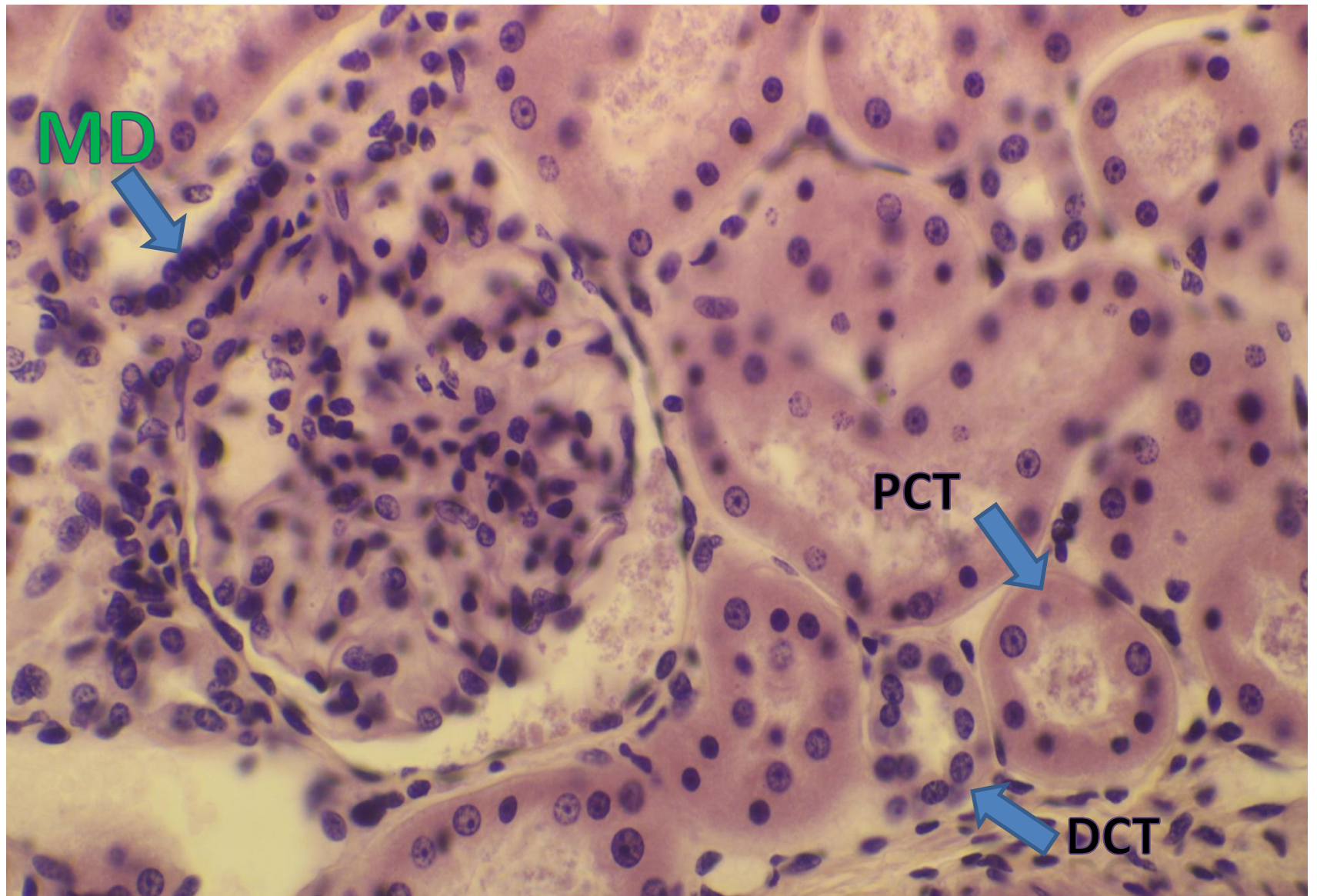


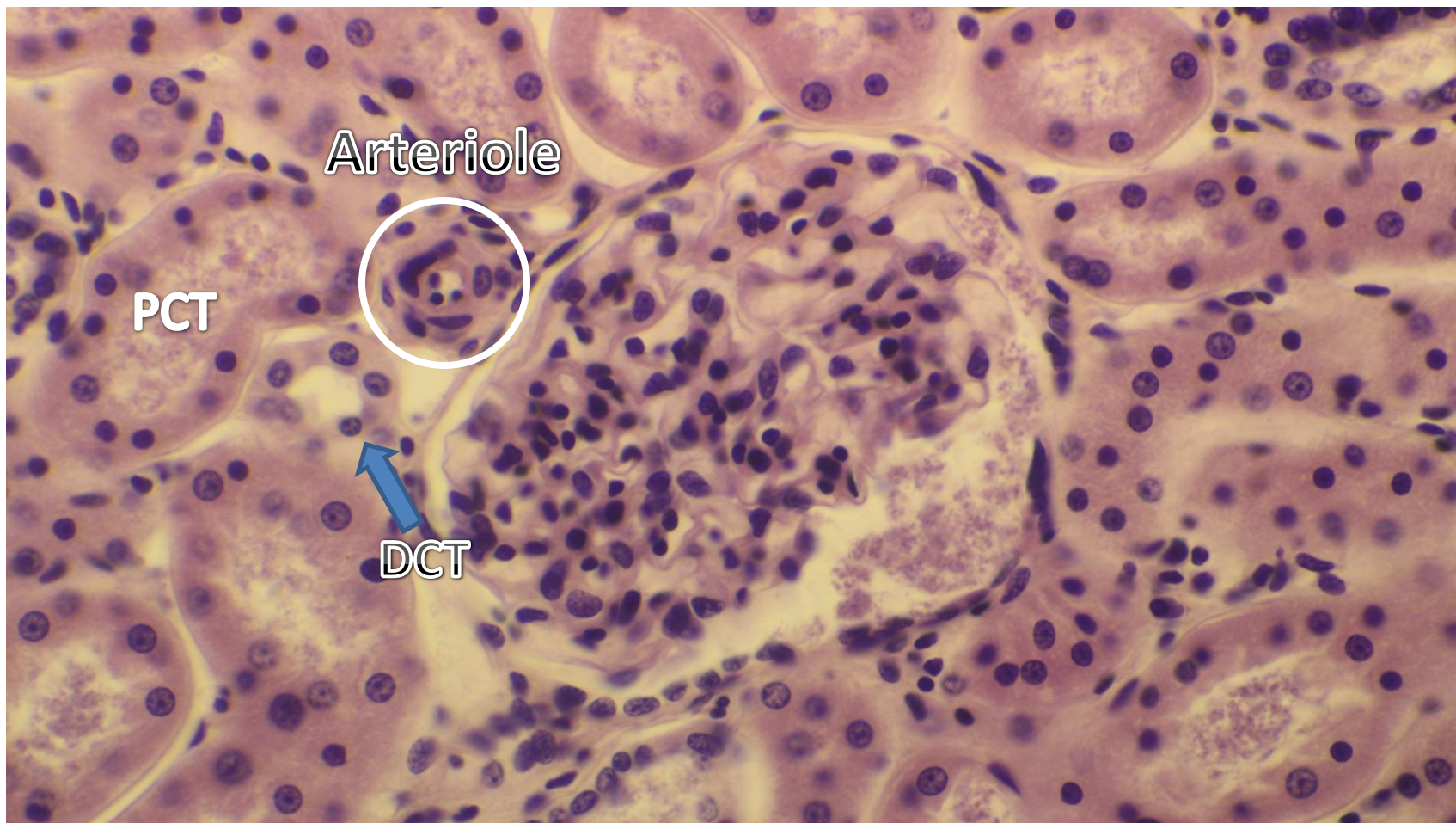
Medulla



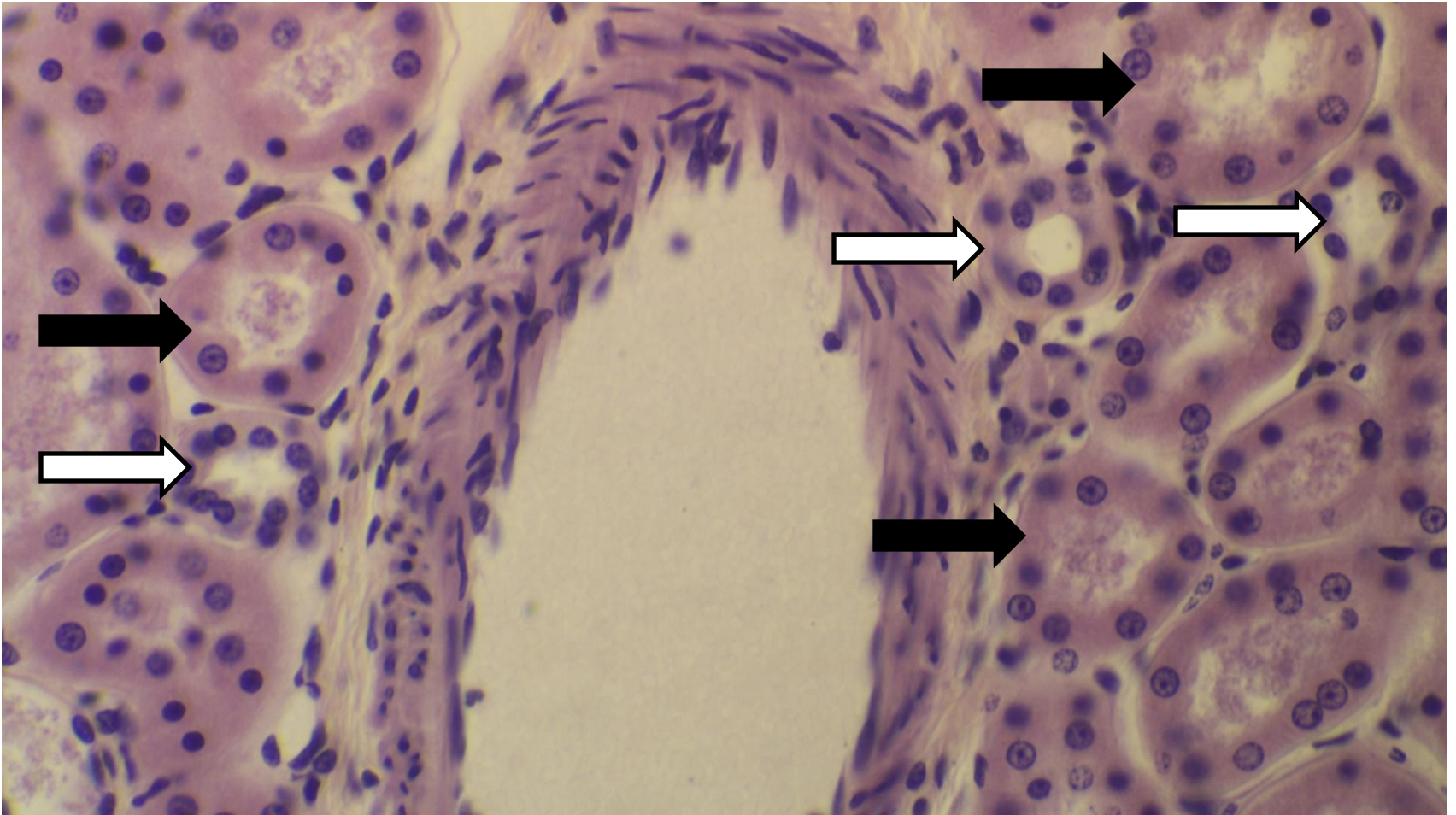
Glomerulus (G), proximal convoluted tubule (PCT), Distal convoluted tubule (DCT), and Macula densa (MD)



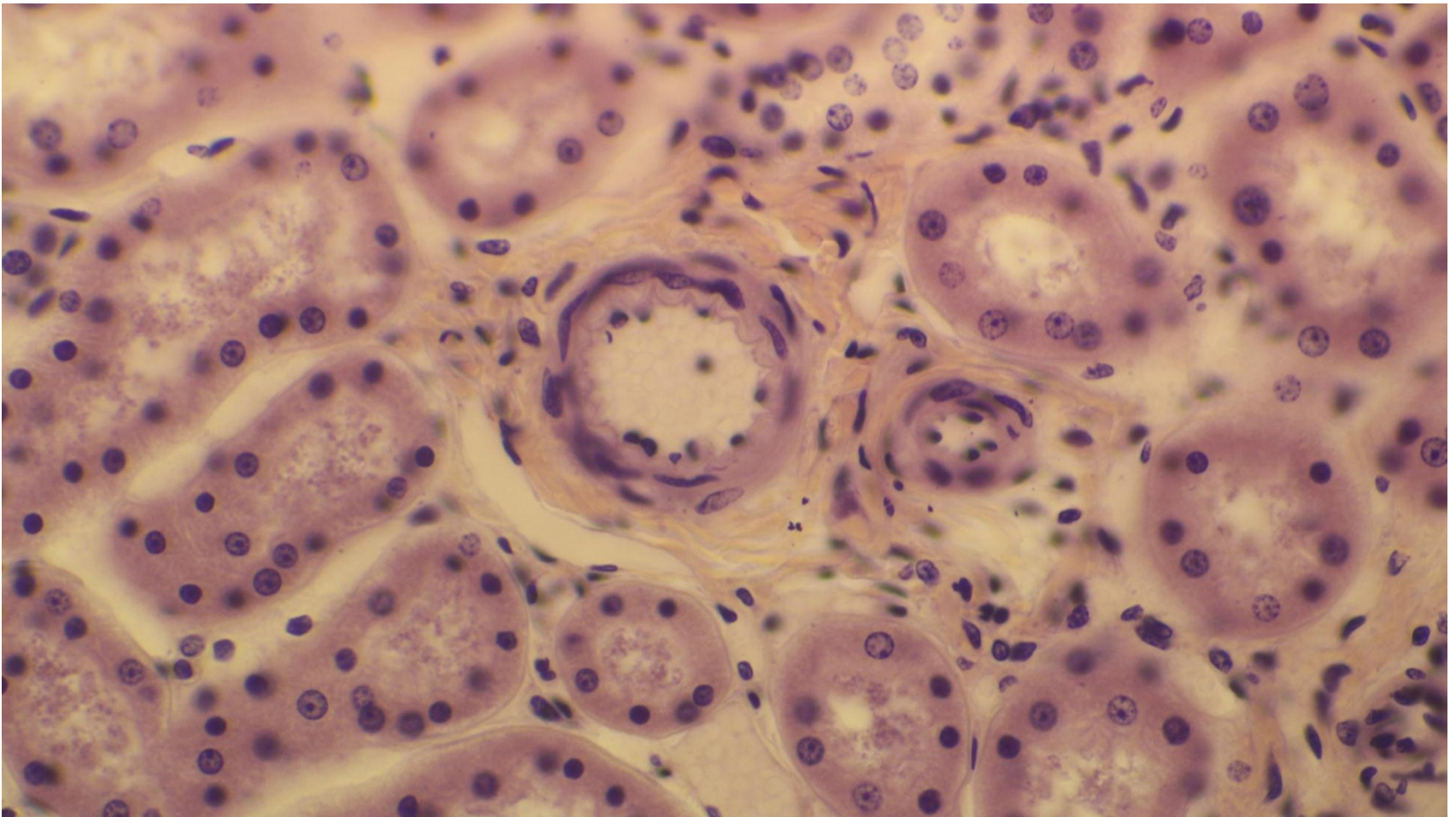


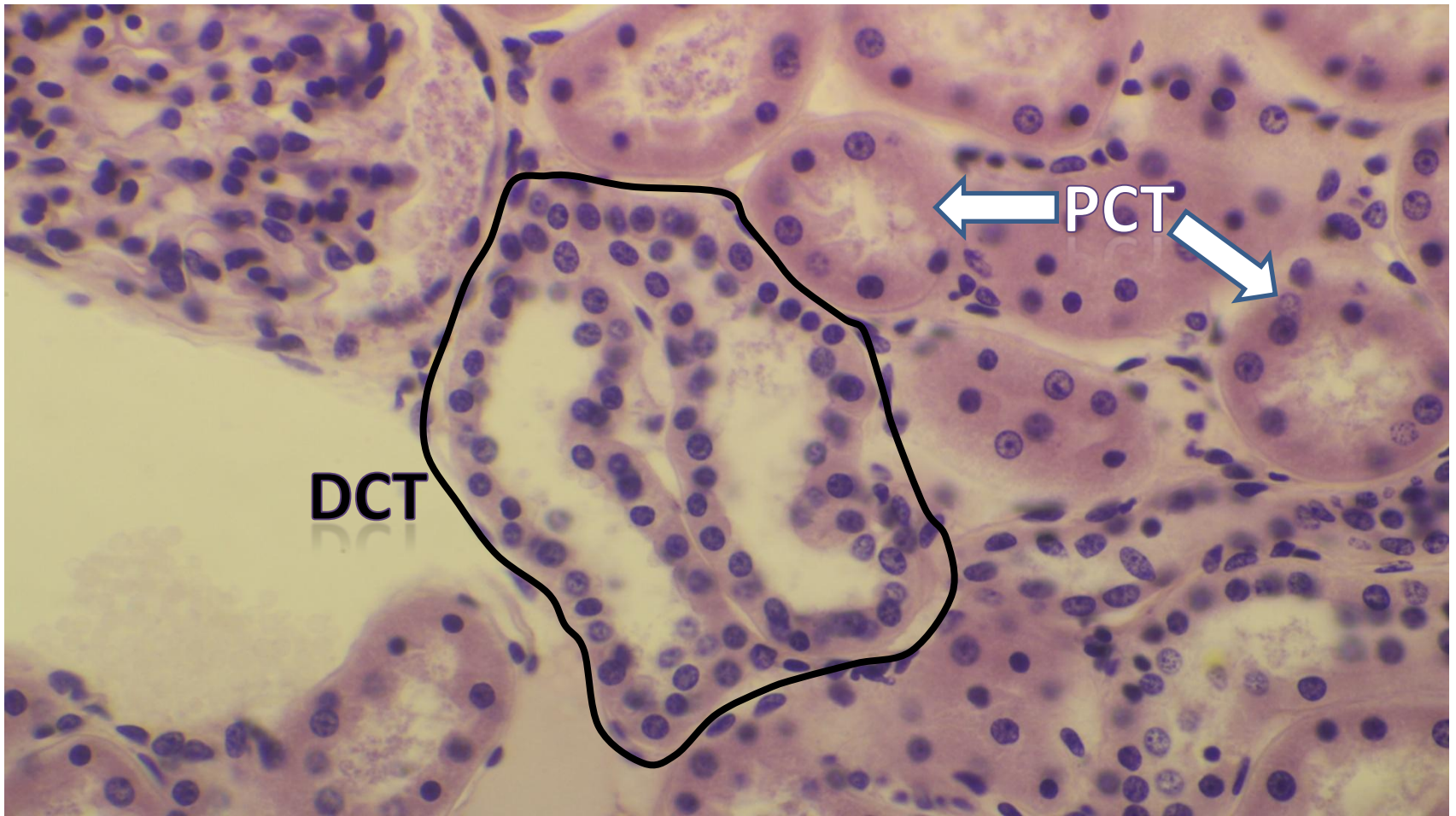


PCT (black arrow) and DCT (white arrow)

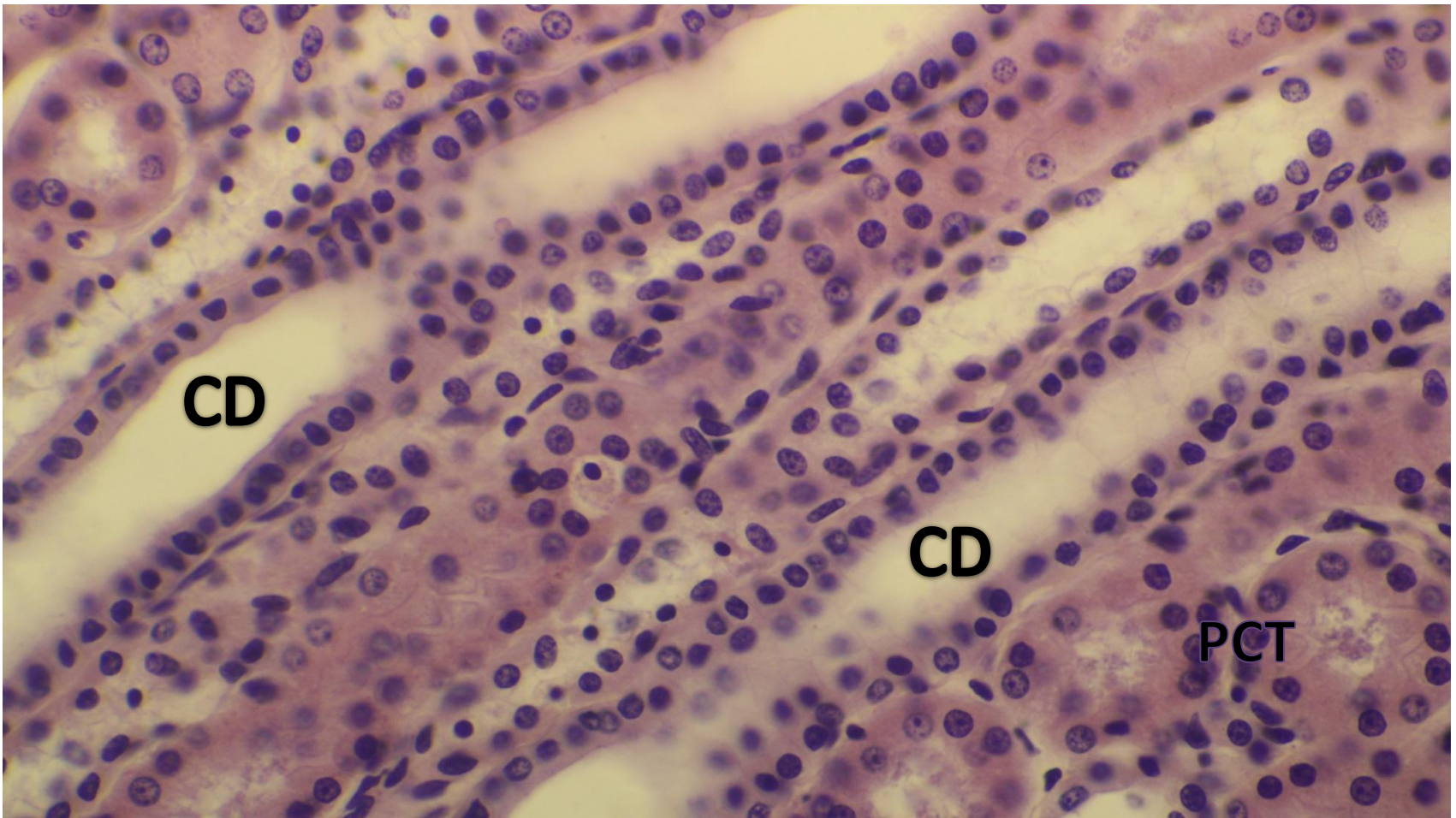


Small artery and arteriole

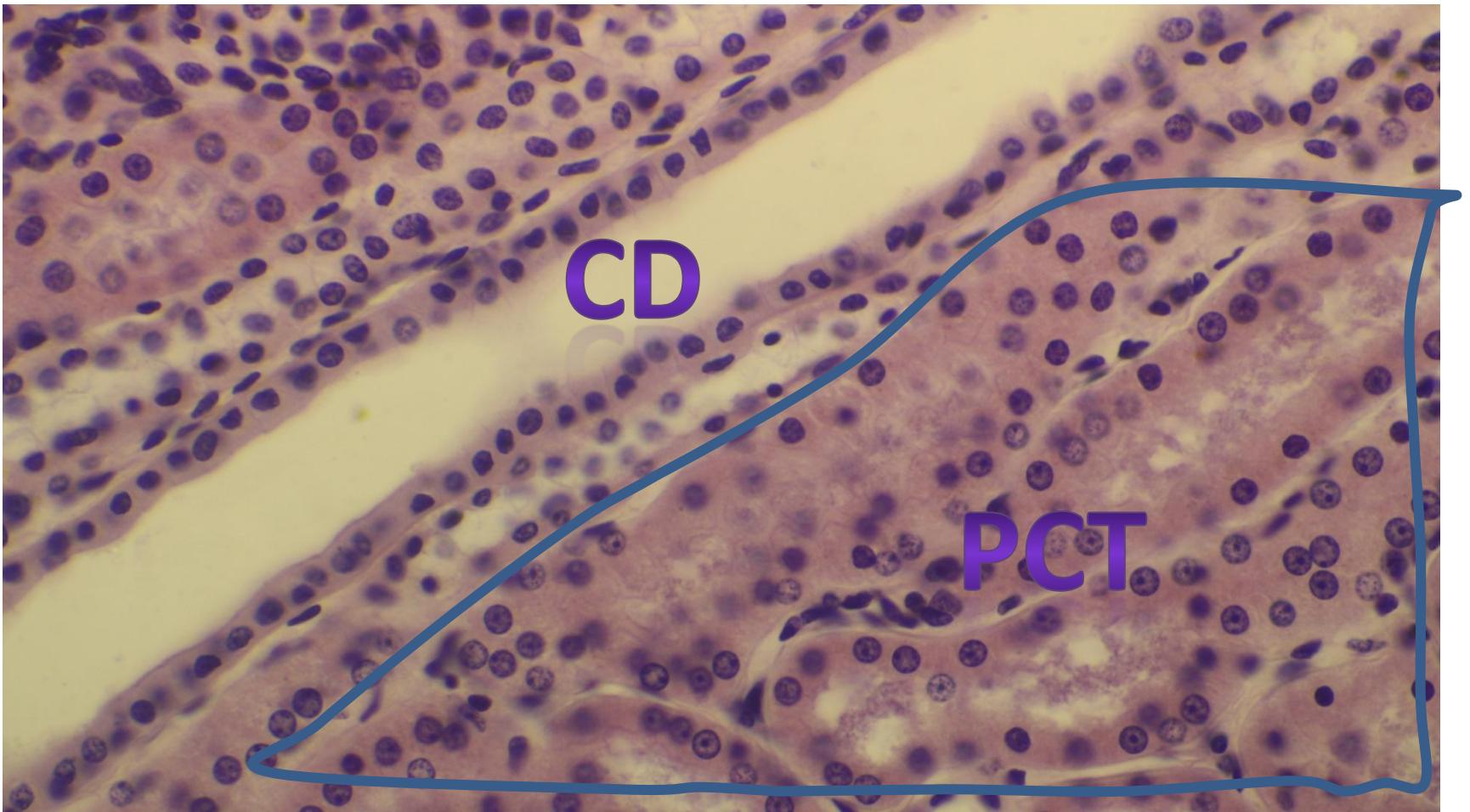




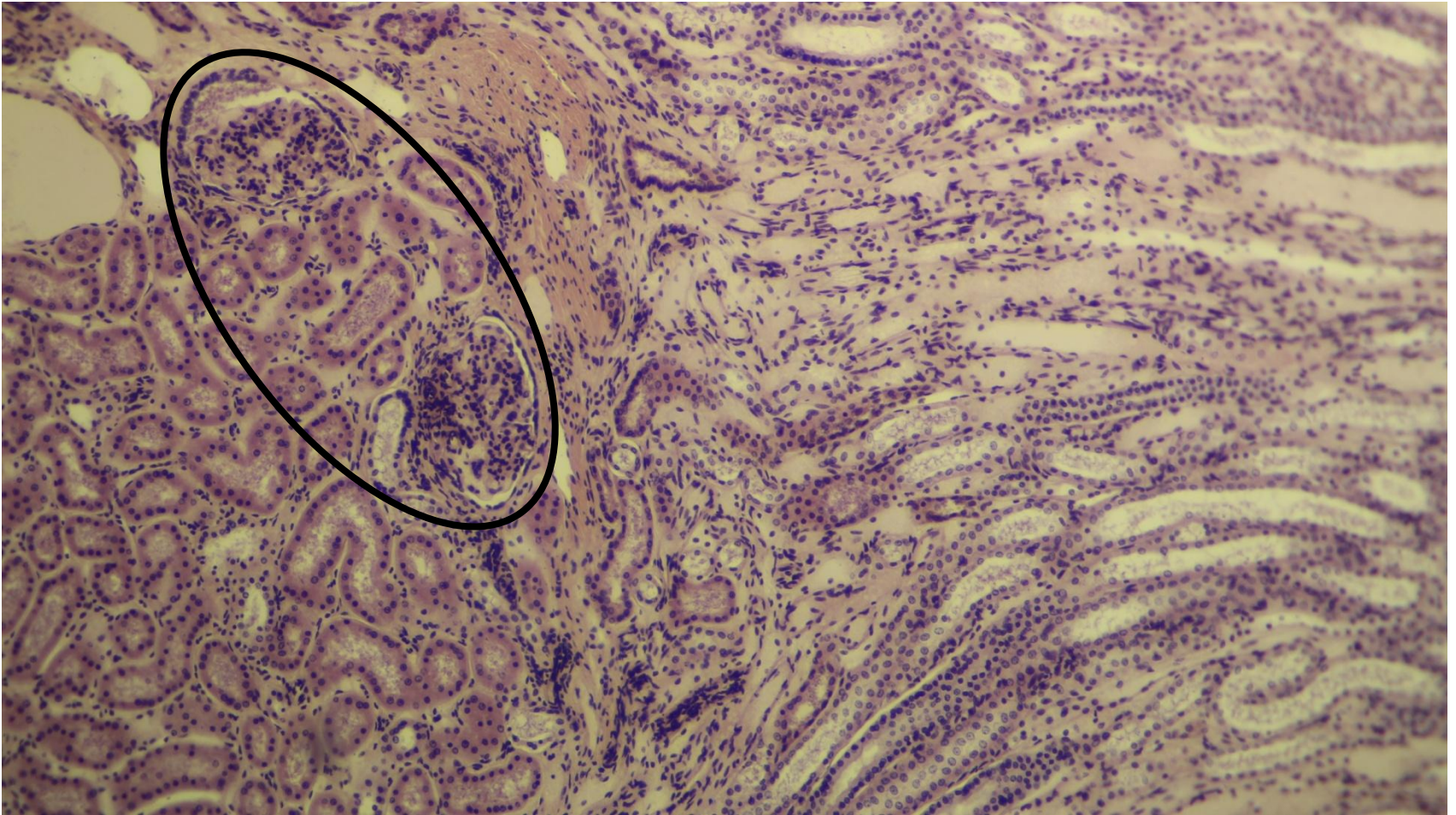
Medullary rays (Collecting duct) (CD) in the cortex and PCT



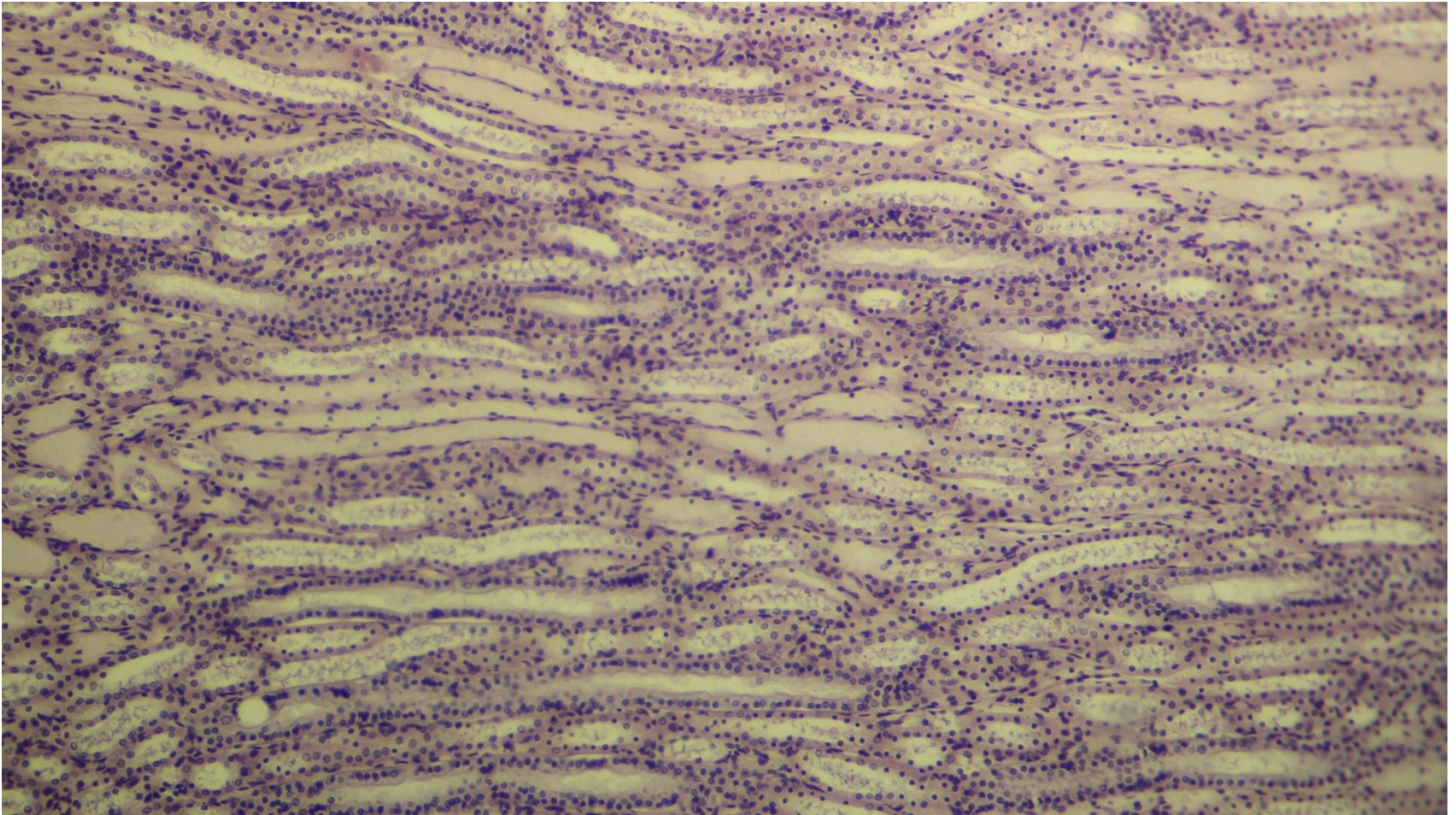
Medullary rays (Collecting duct) (CD) in the cortex and PCT



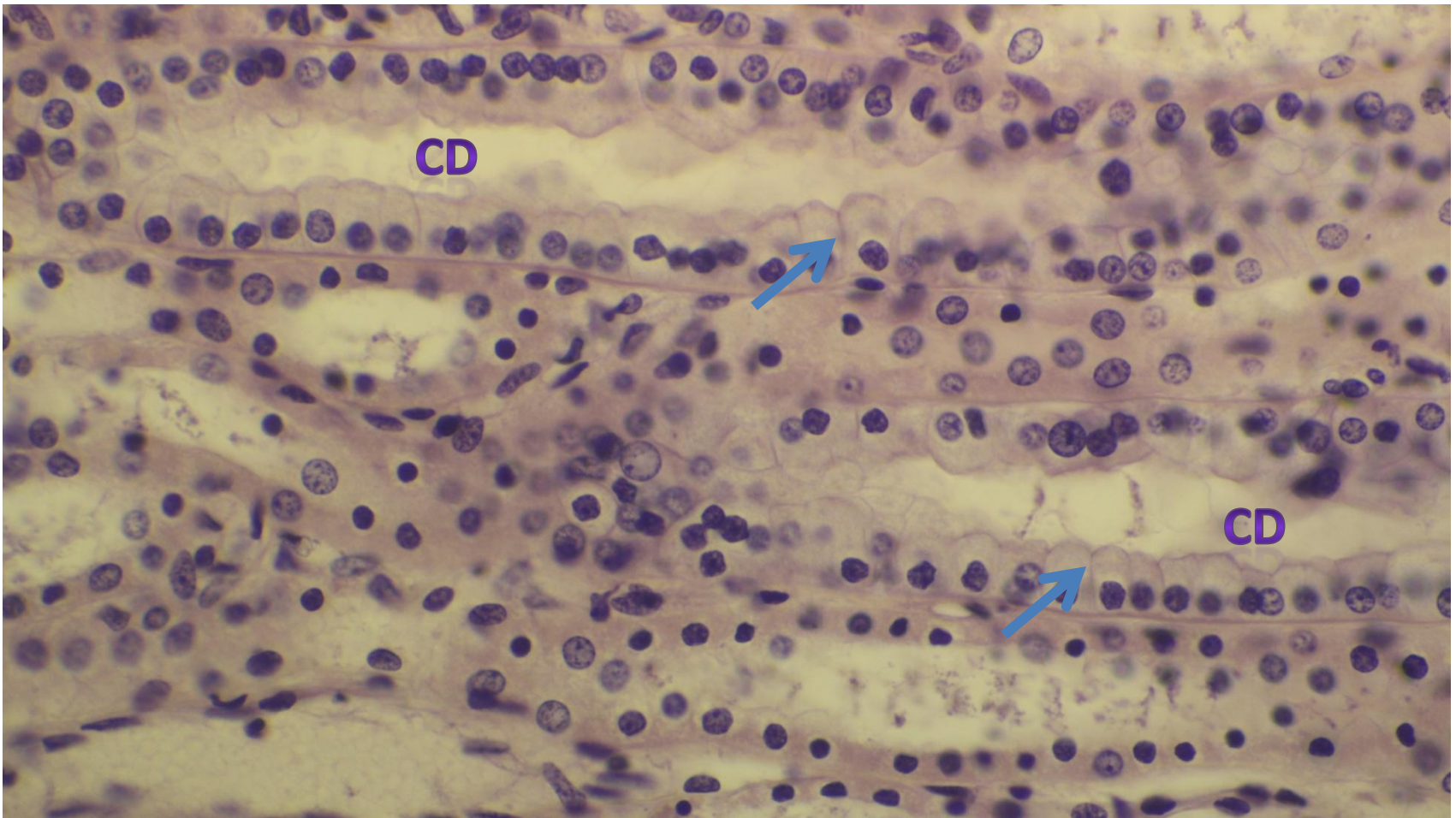
Corticomedullary junction and Juxtamedullary nephron



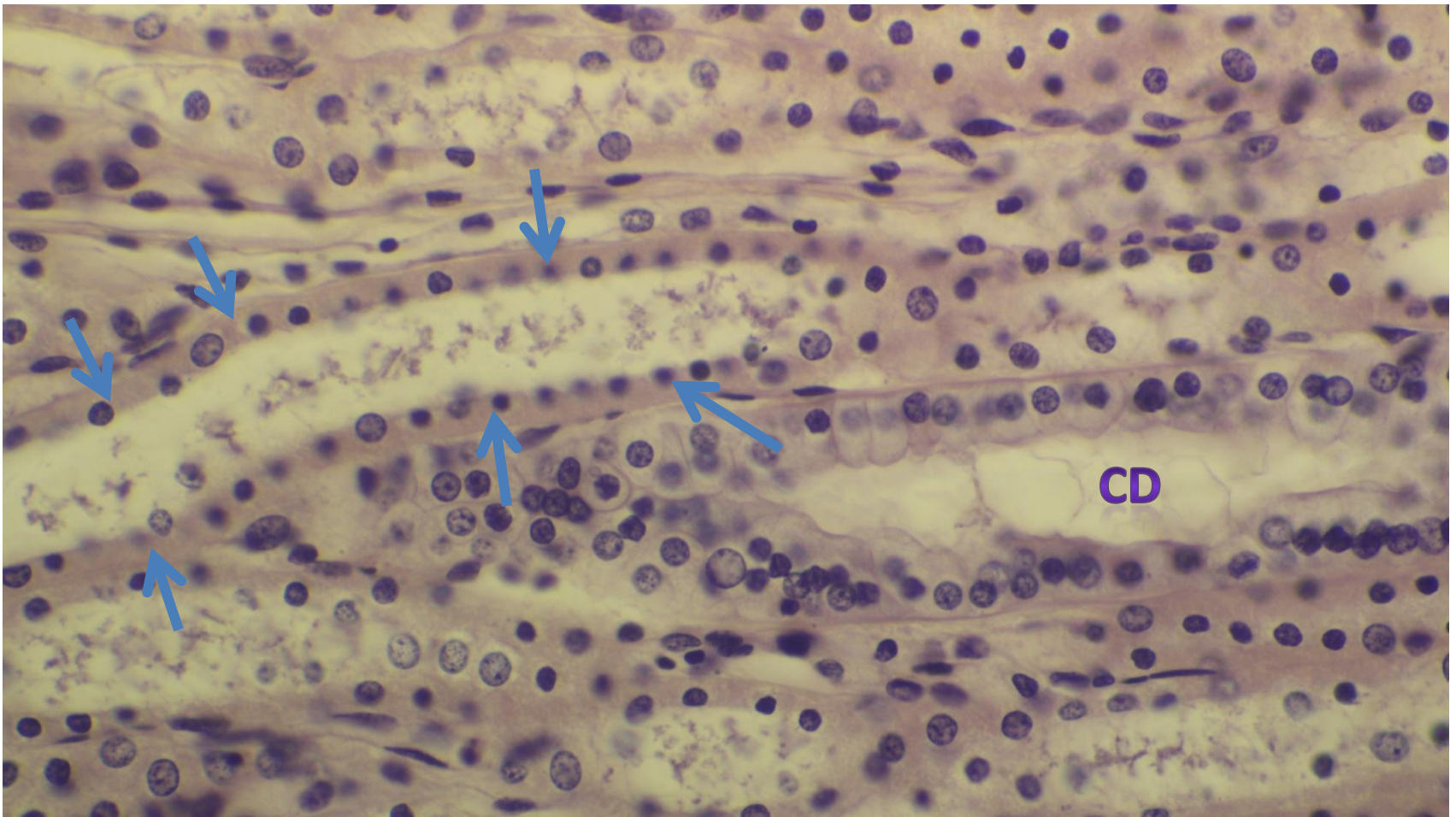
Medulla



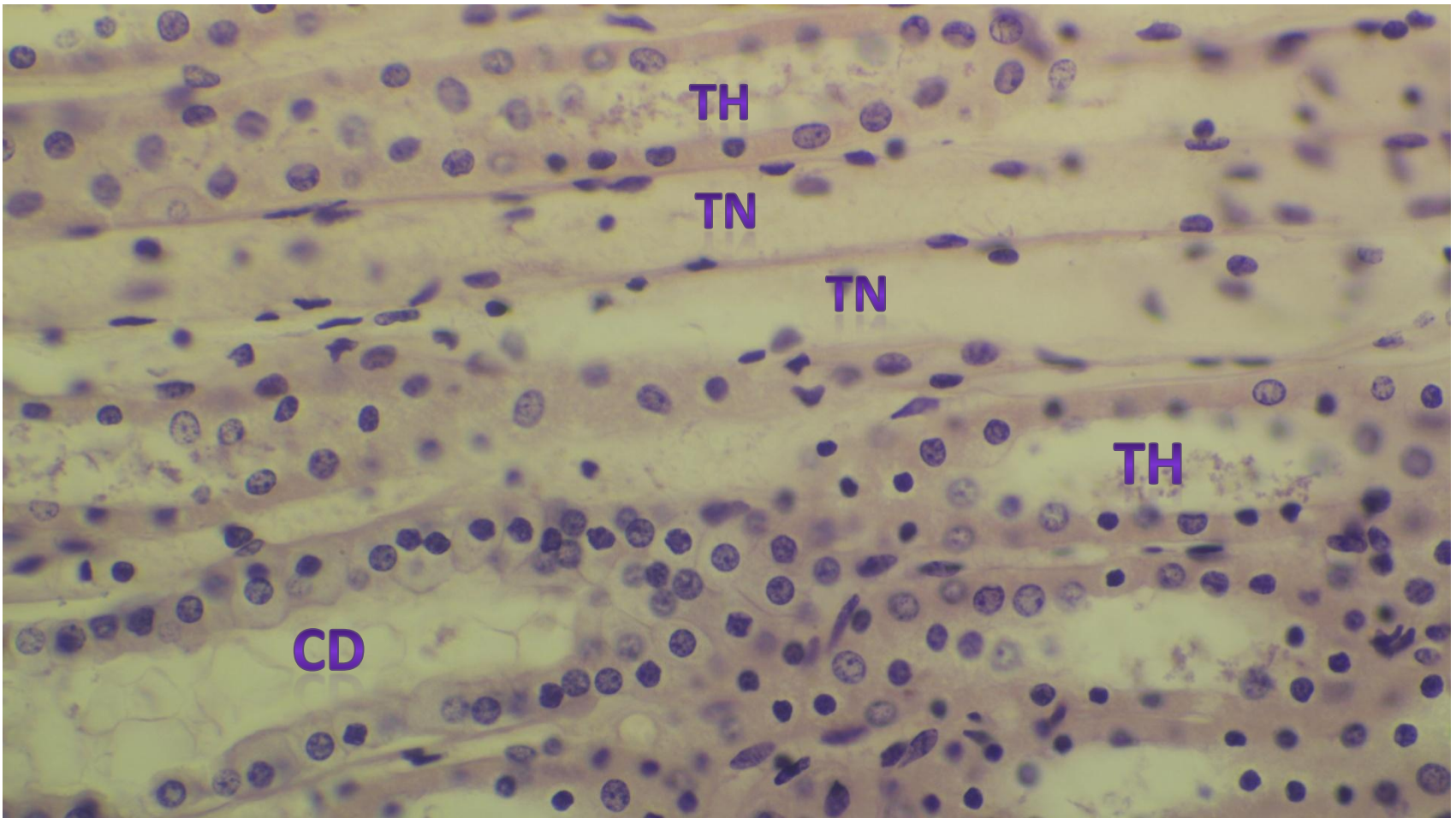
Collecting duct (CD) showing dome shaped cell and clear intercellular boundaries (arrow)



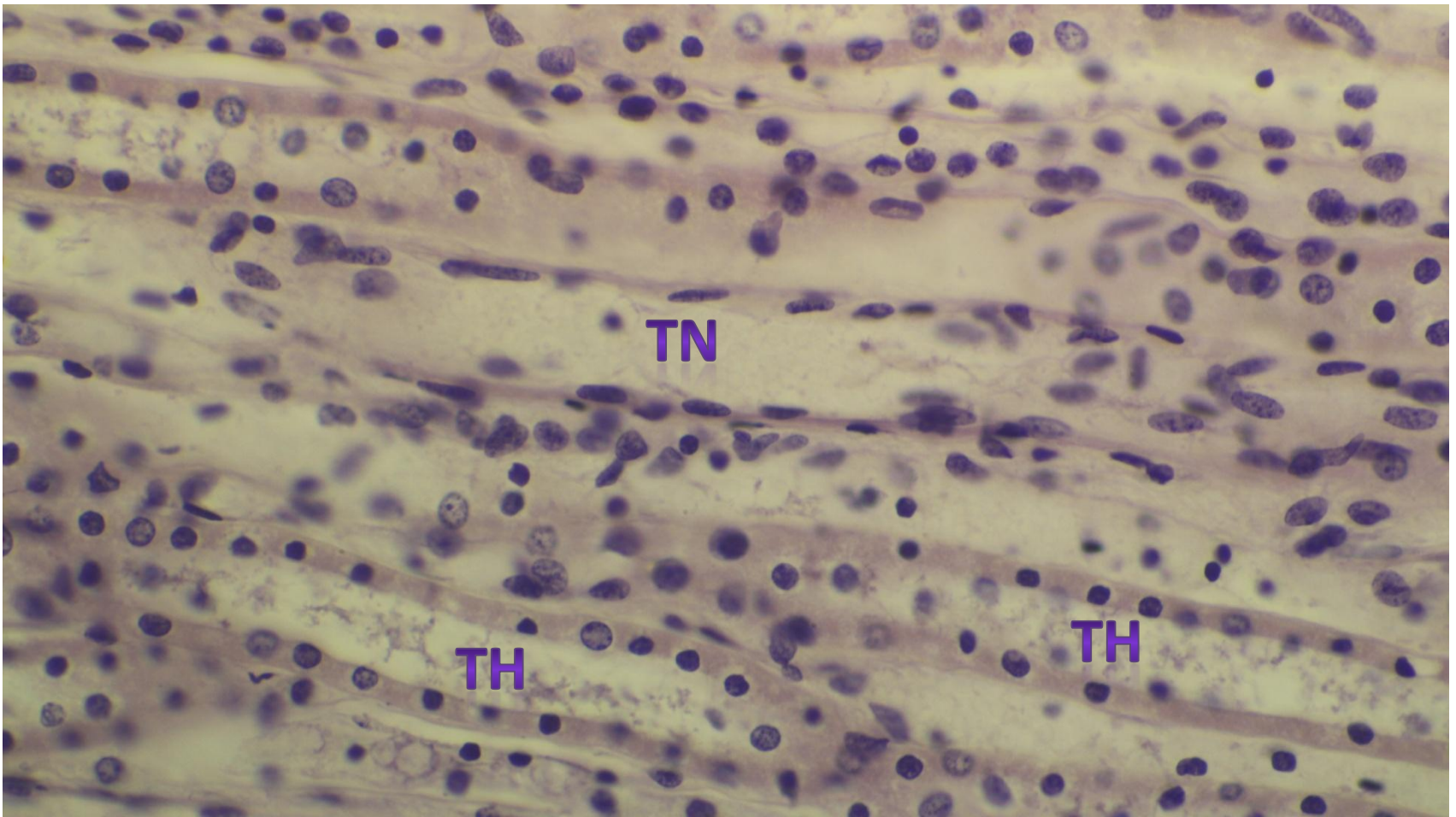
Collecting duct (CD) and thick segment of loop of Henle (arrows)



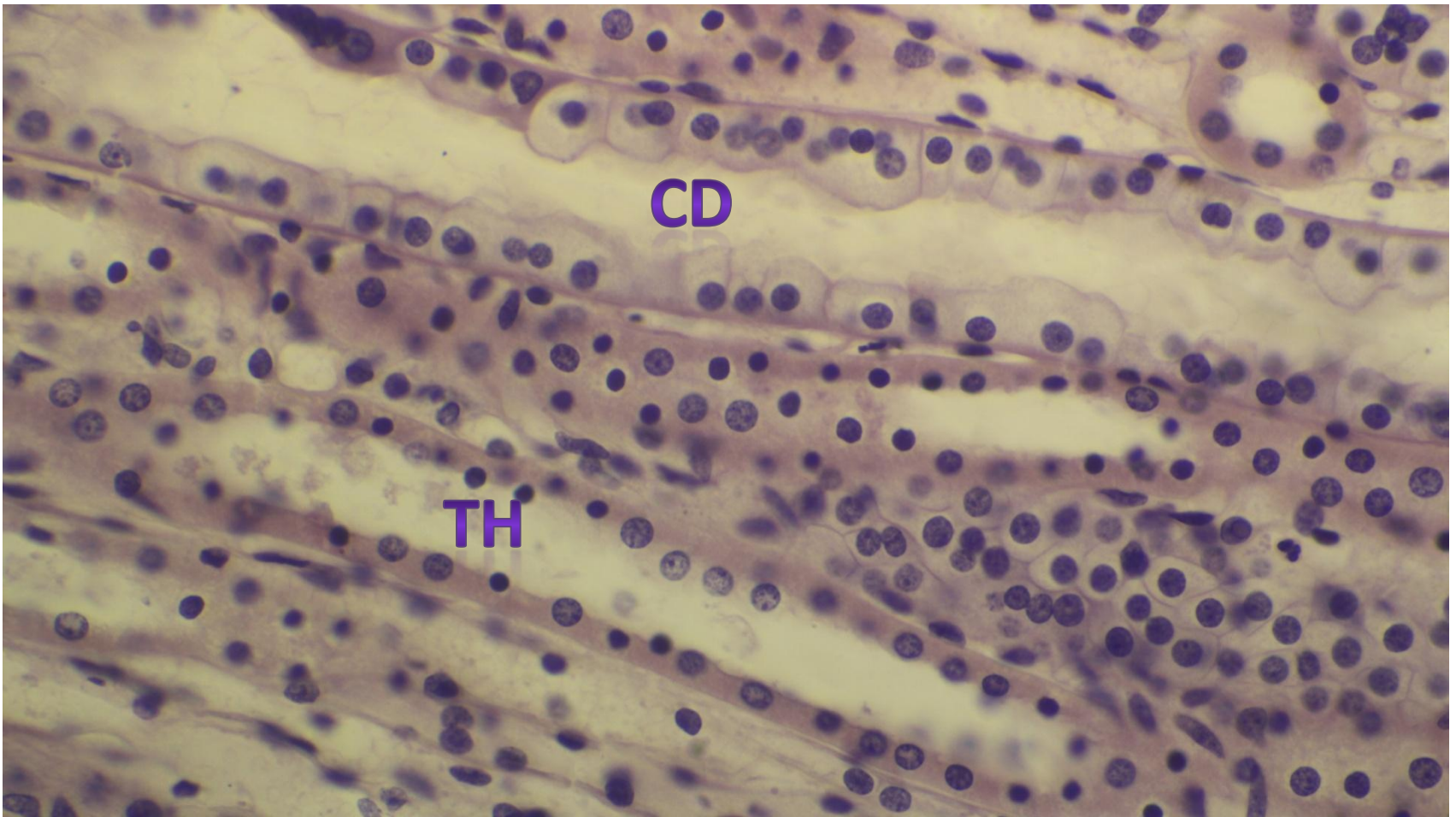
CD, thick segment (TH) and thin segment (TN) of Henle



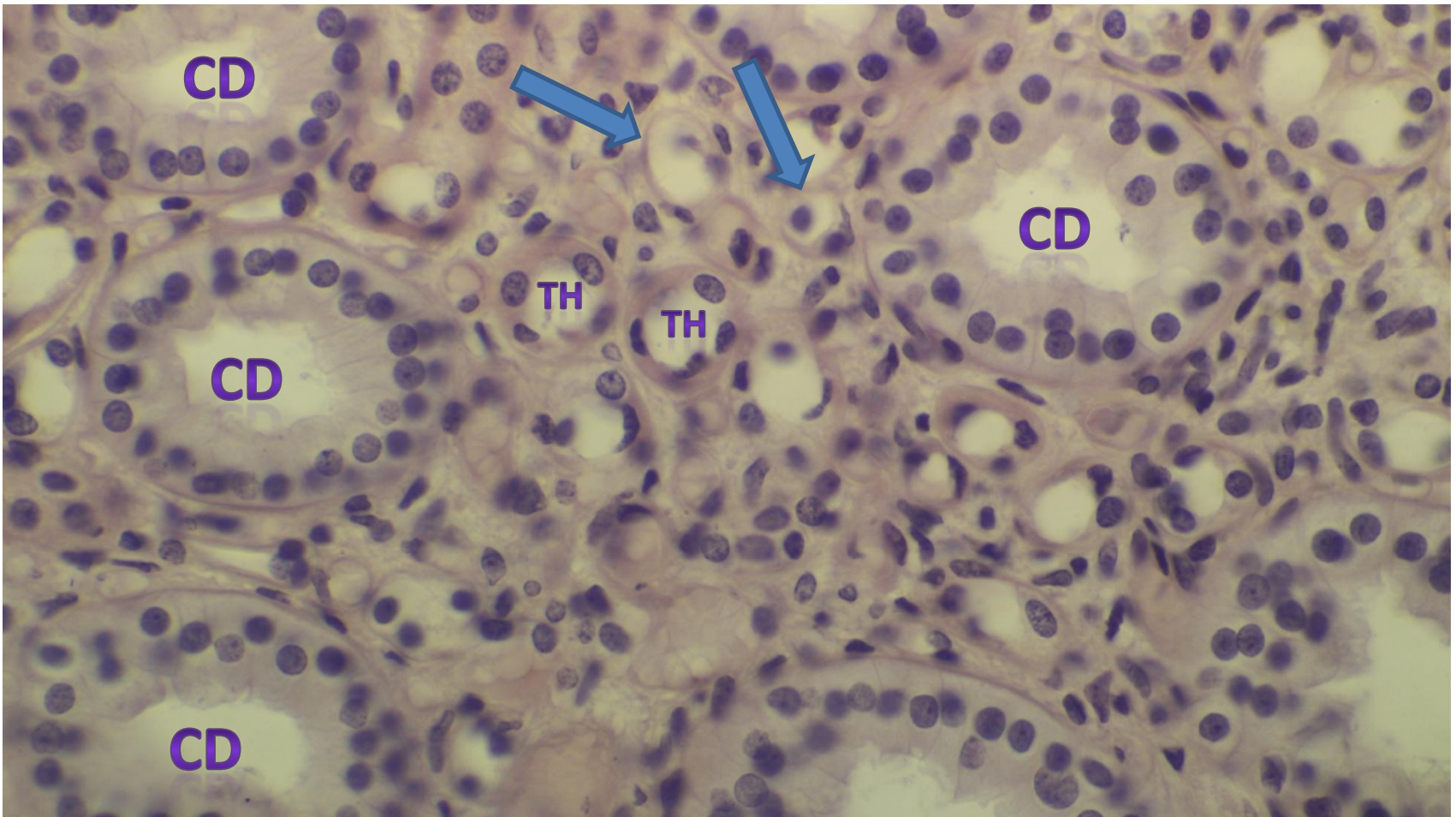
Thick segment (TH) and thin segment (TN) of loop of Henle



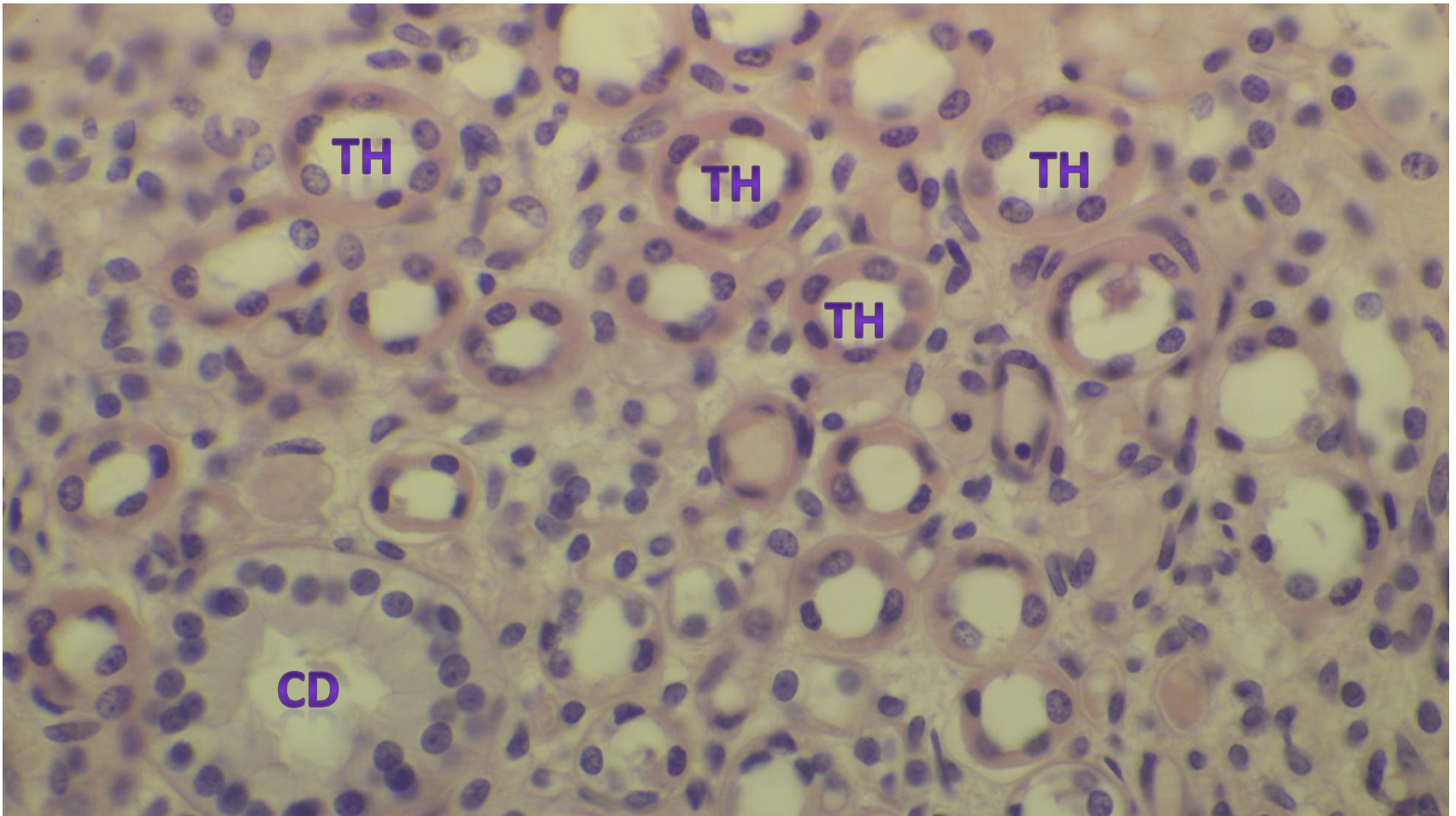
CD & TH



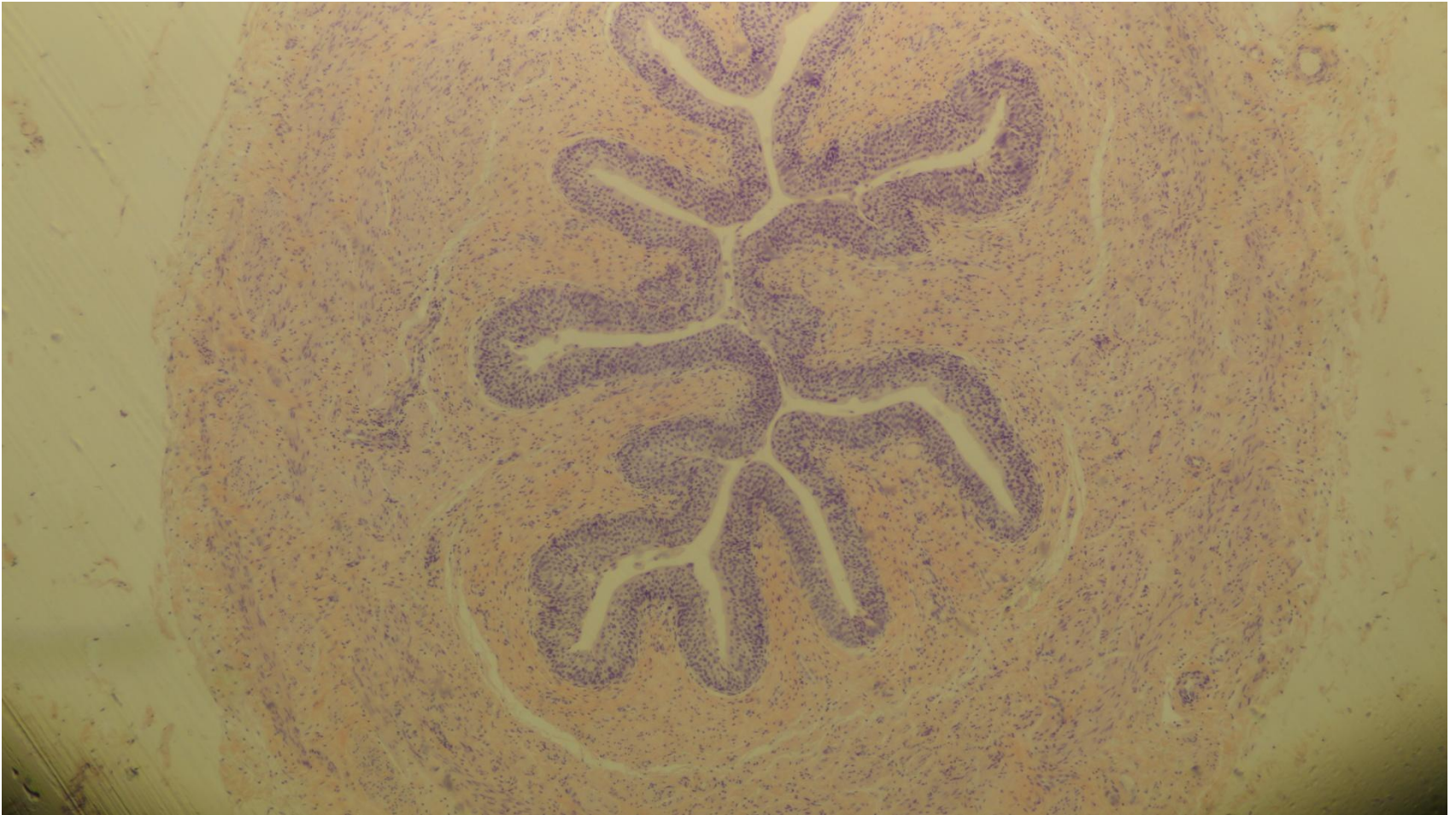
Cross sections of CD, TH, & TN (arrow)

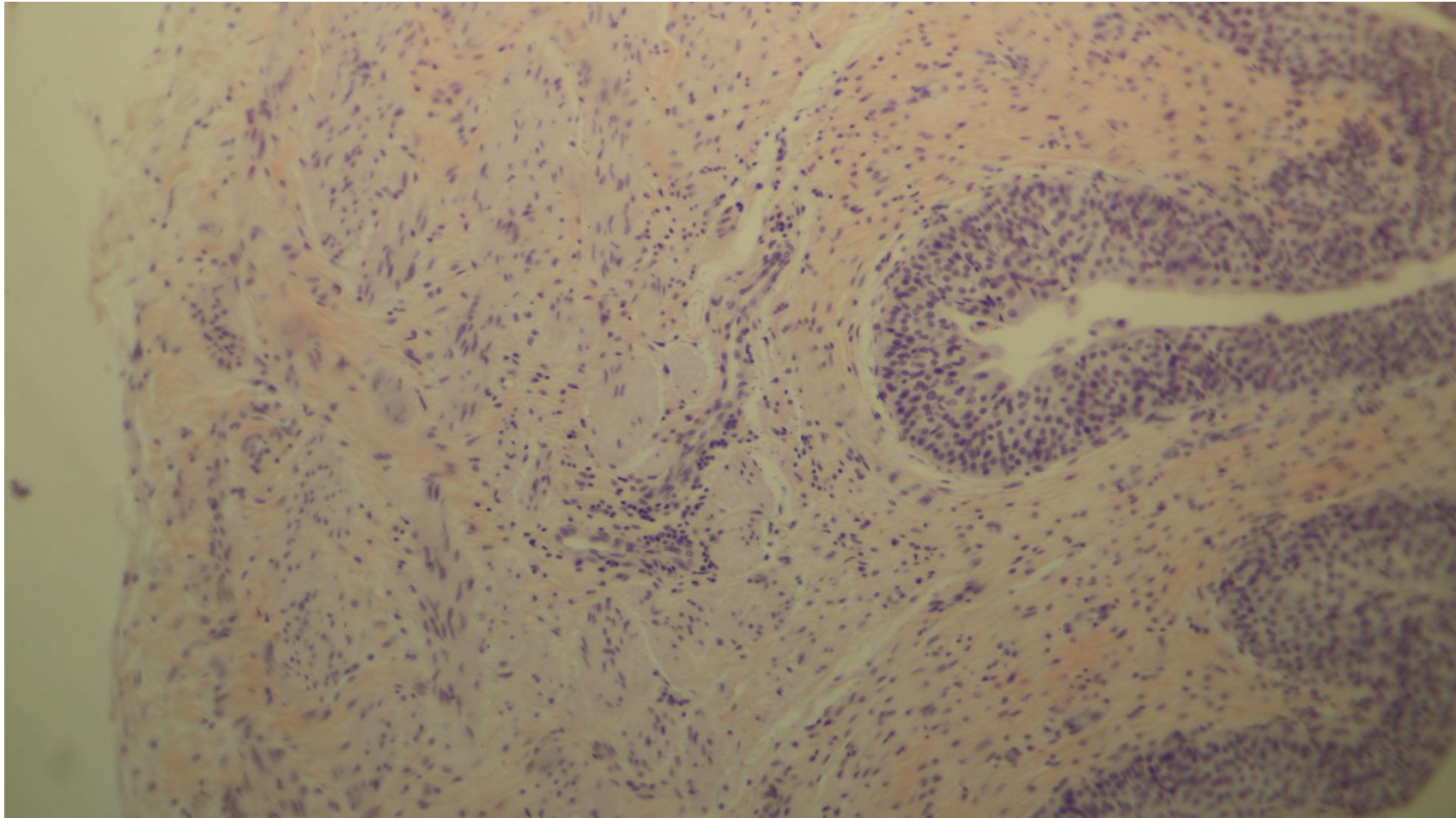


Cross sections of CD and TH

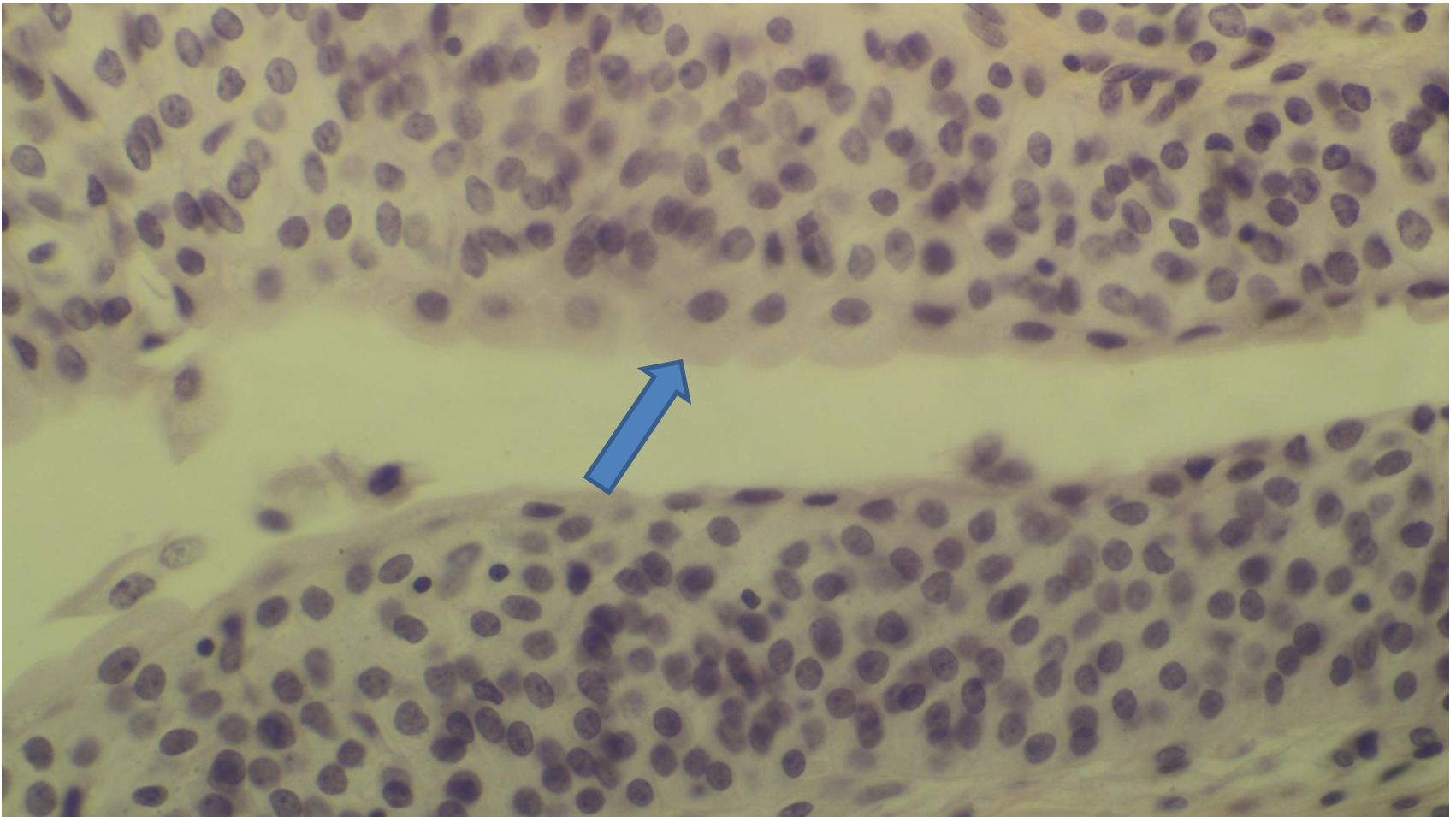


Ureter

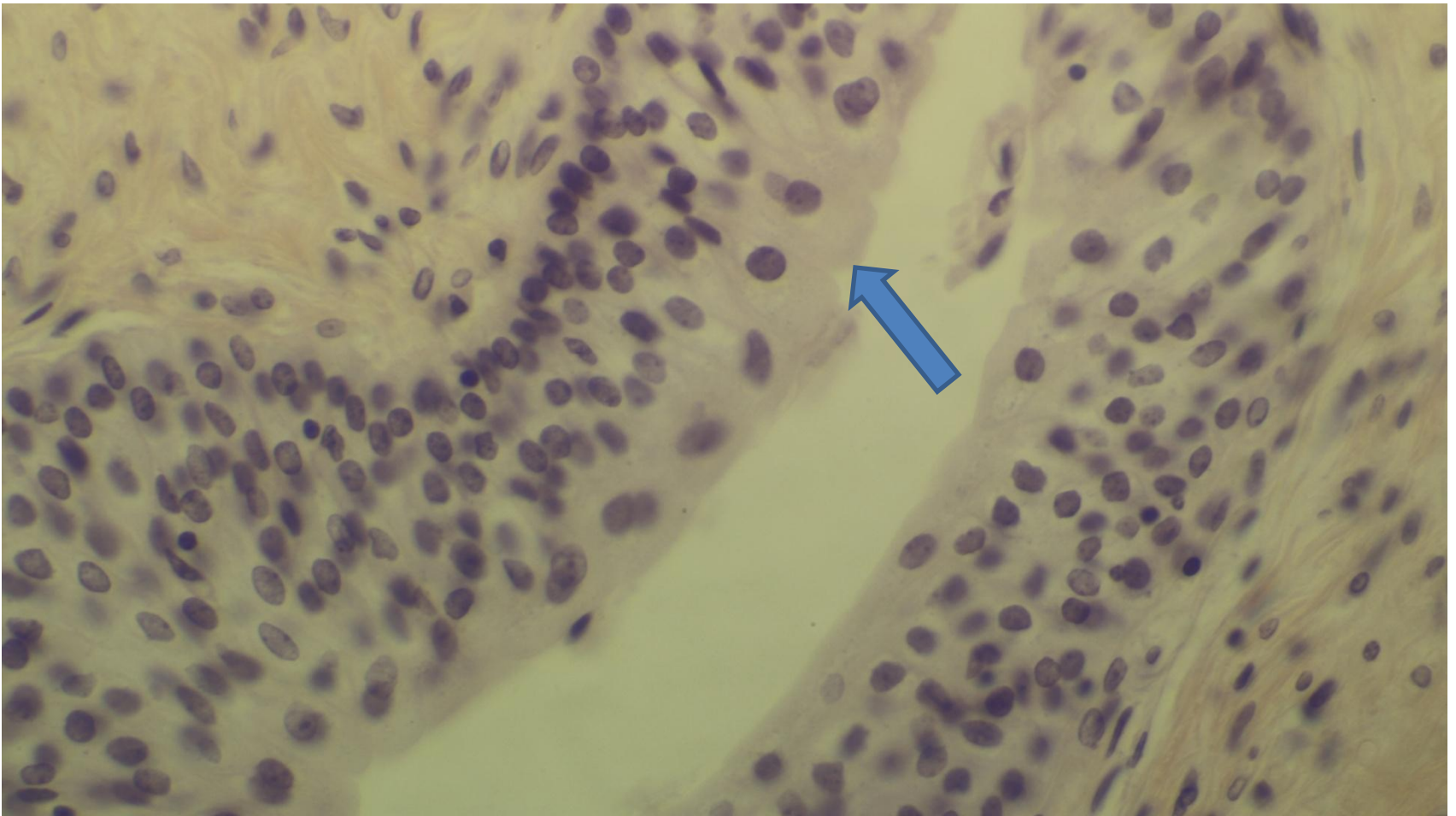




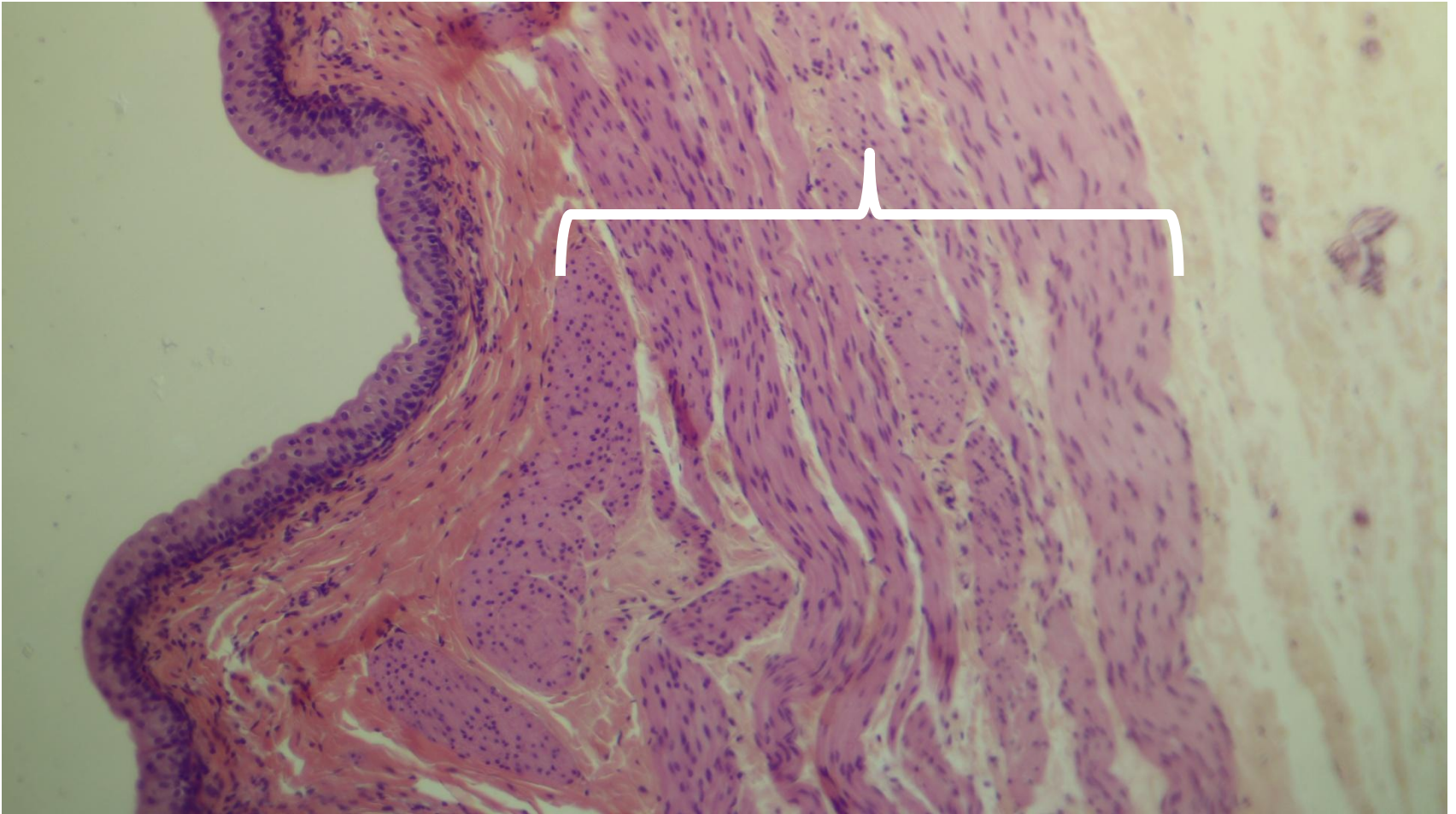
Transitional epithelium (Dome shaped cells)



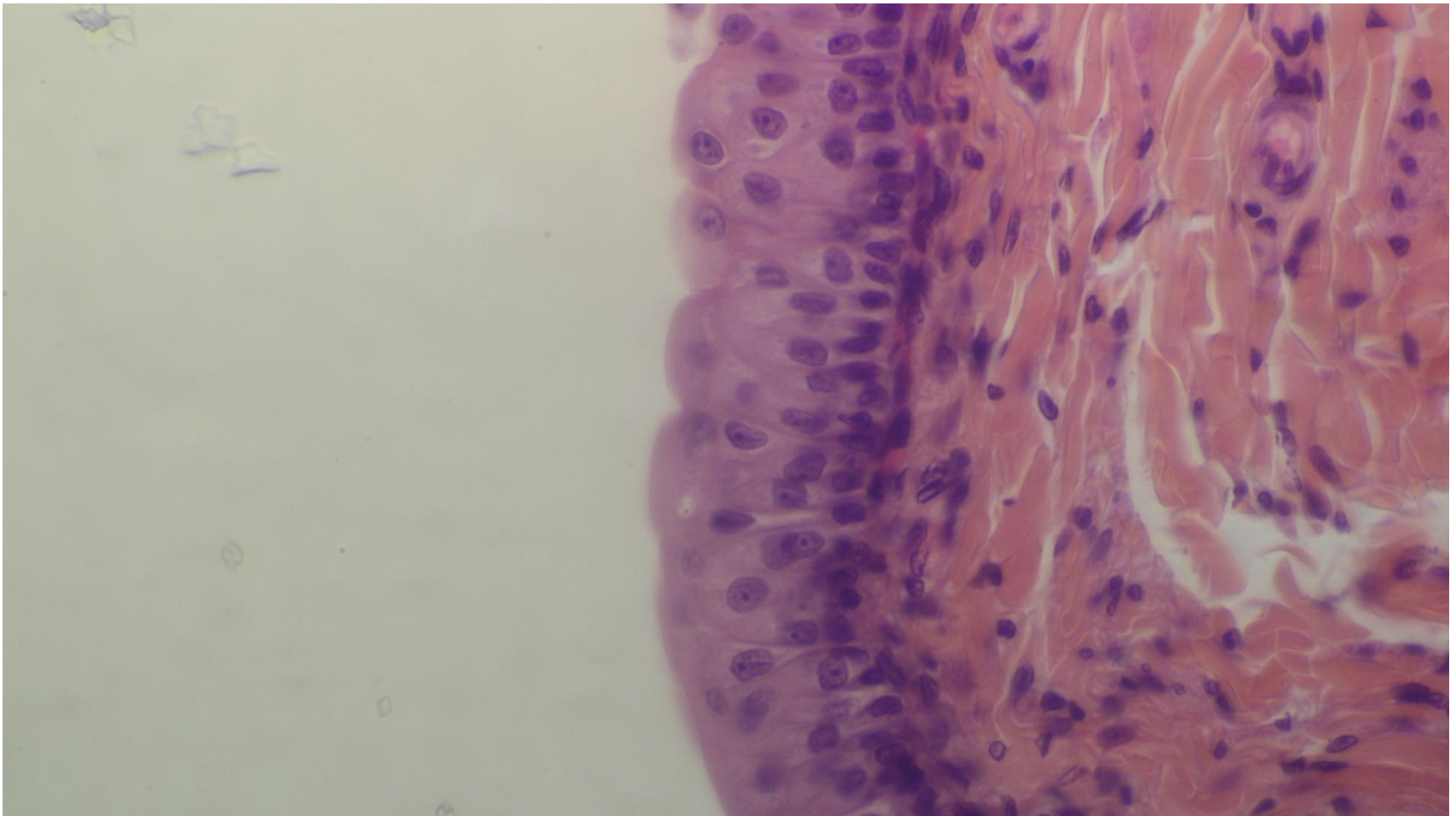
Transitional epithelium (Dome shaped cells)



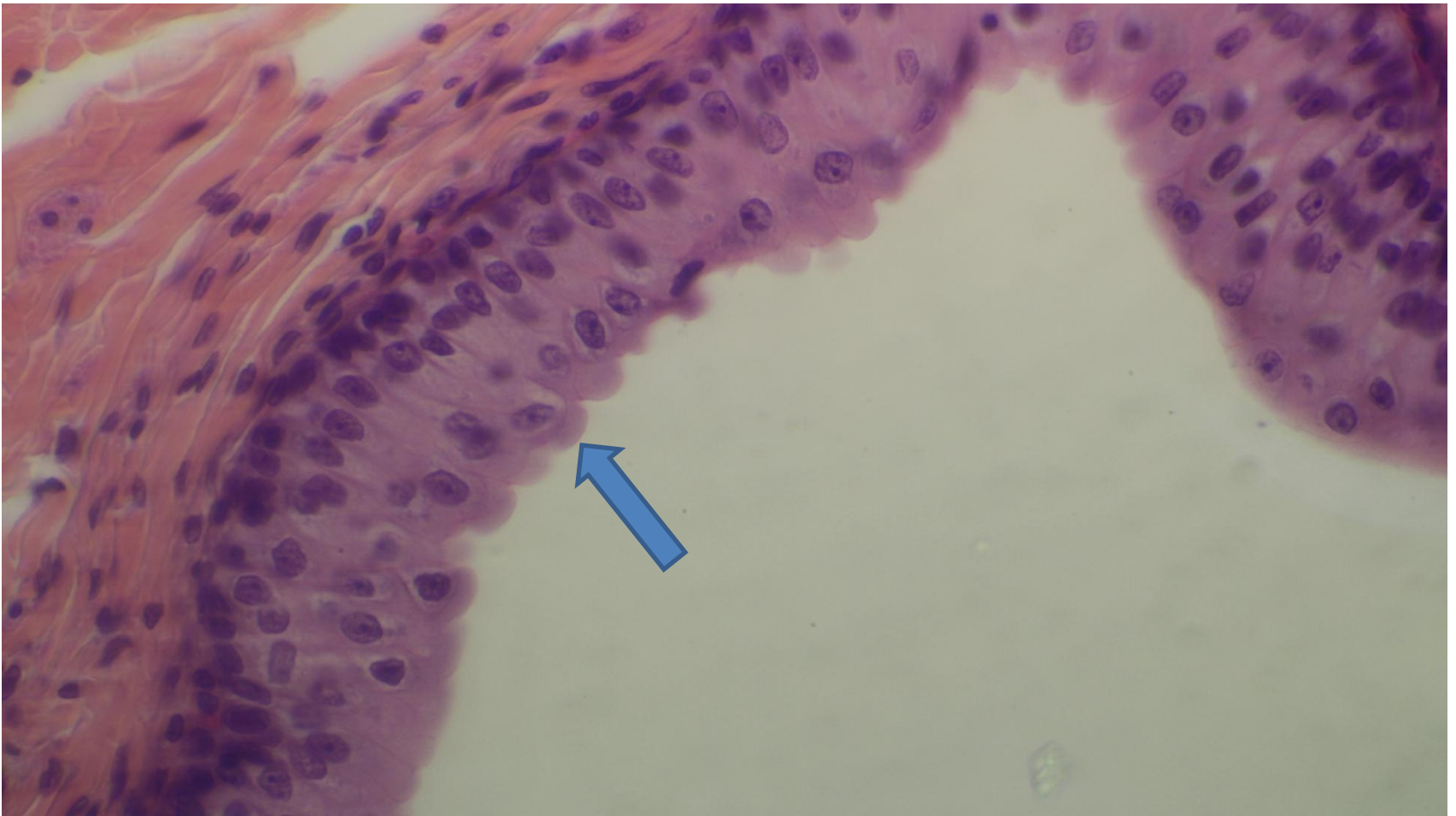
Urinary bladder- Detrusor muscle (DM)



Urinary bladder- transitional epithelium



Urinary bladder- transitional (dome shaped cells)



Urinary bladder- transitional (dome shaped cells)

