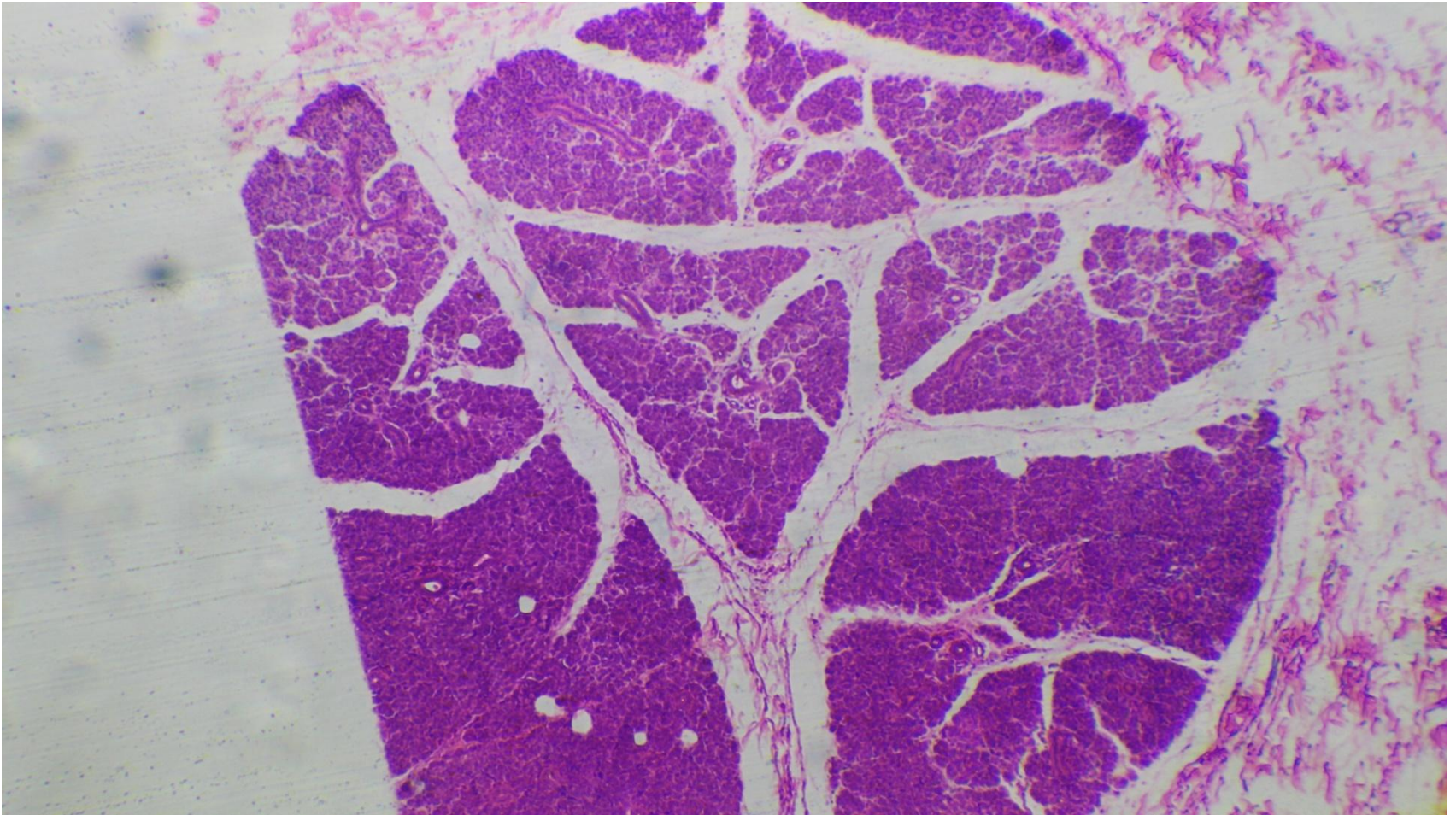
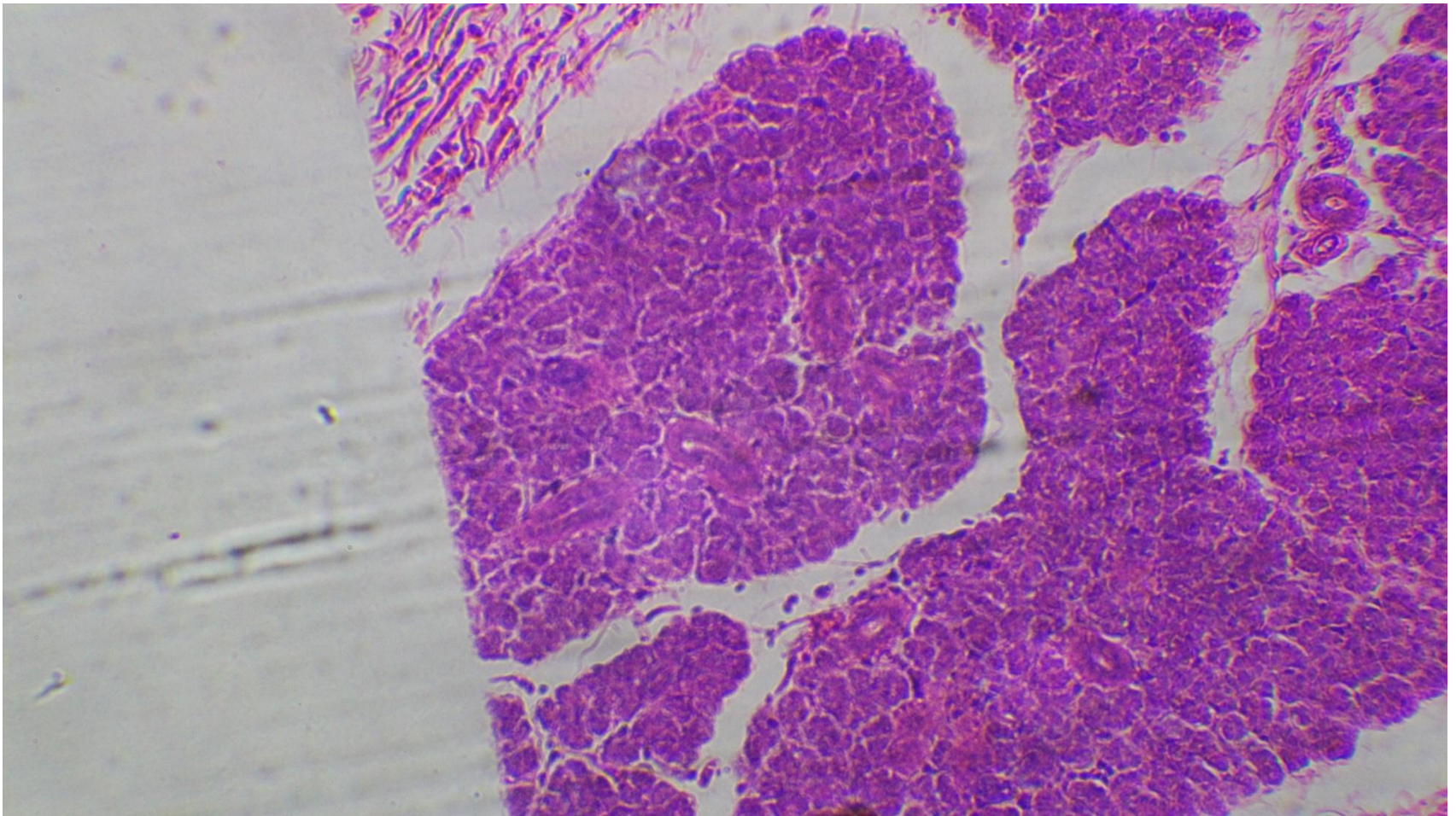


Glands associated with the digestive tract

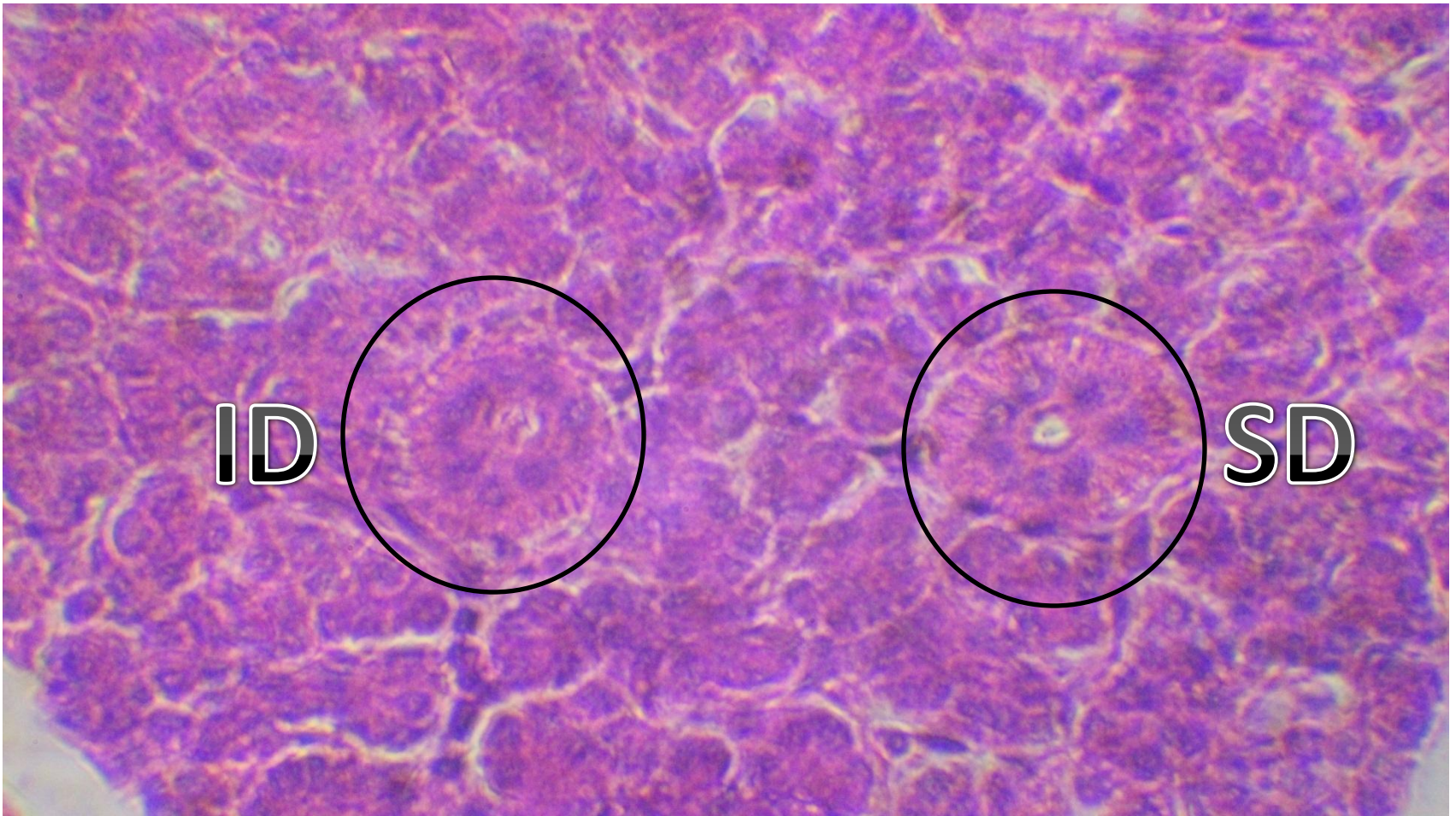
Salivary glands- Parotid gland



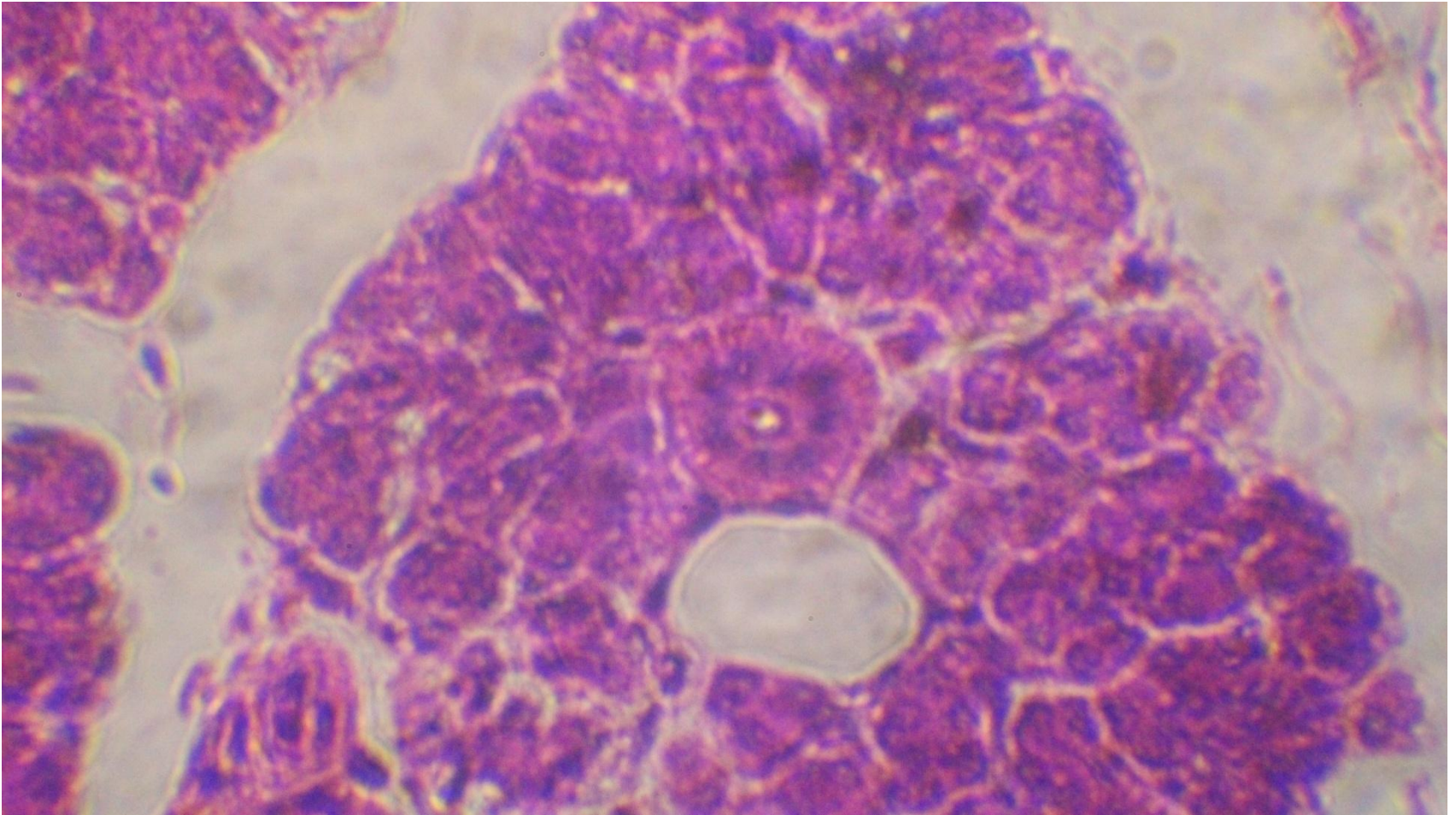
Salivary glands- Parotid gland



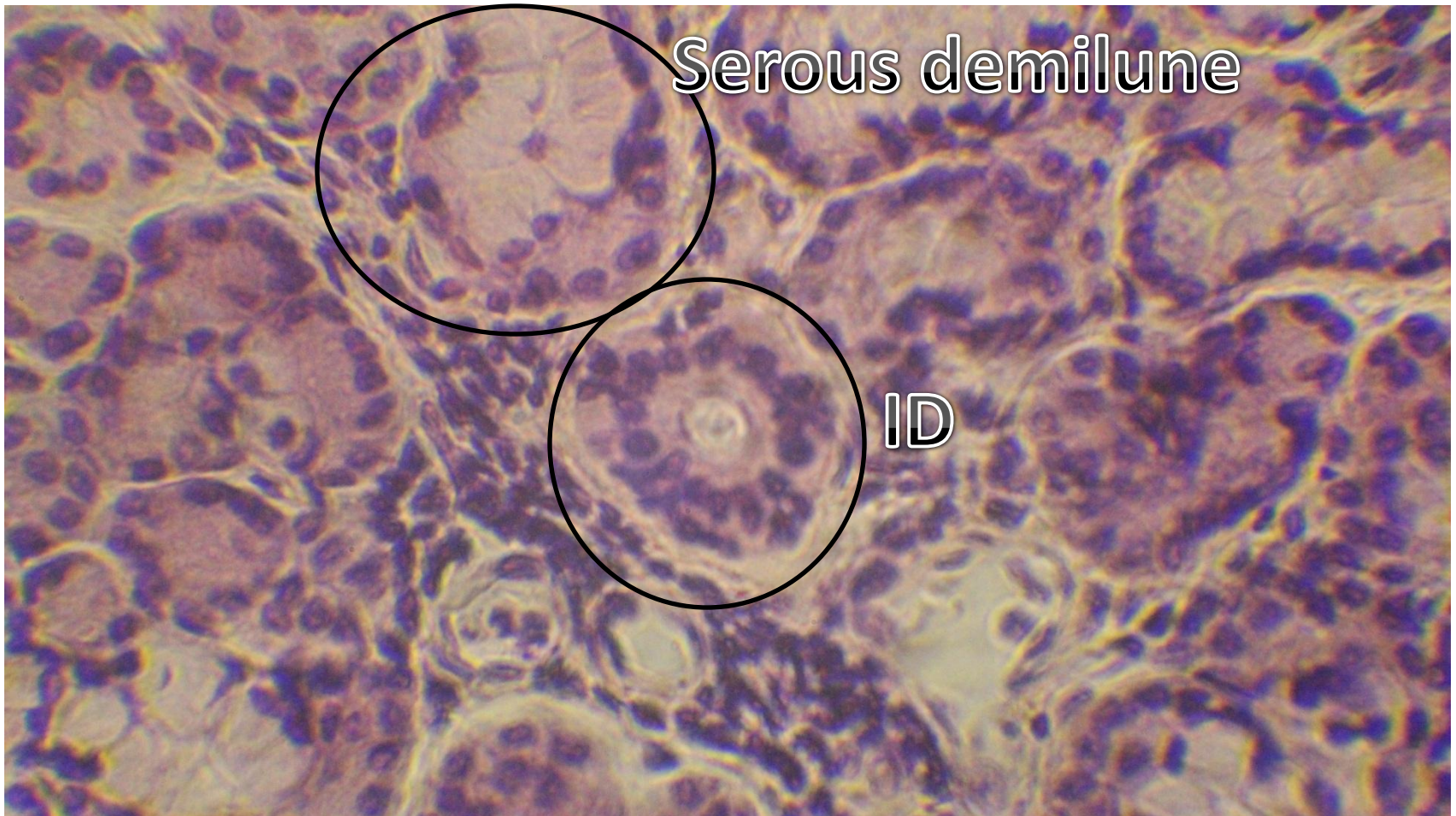
Intercalated and striated ducts



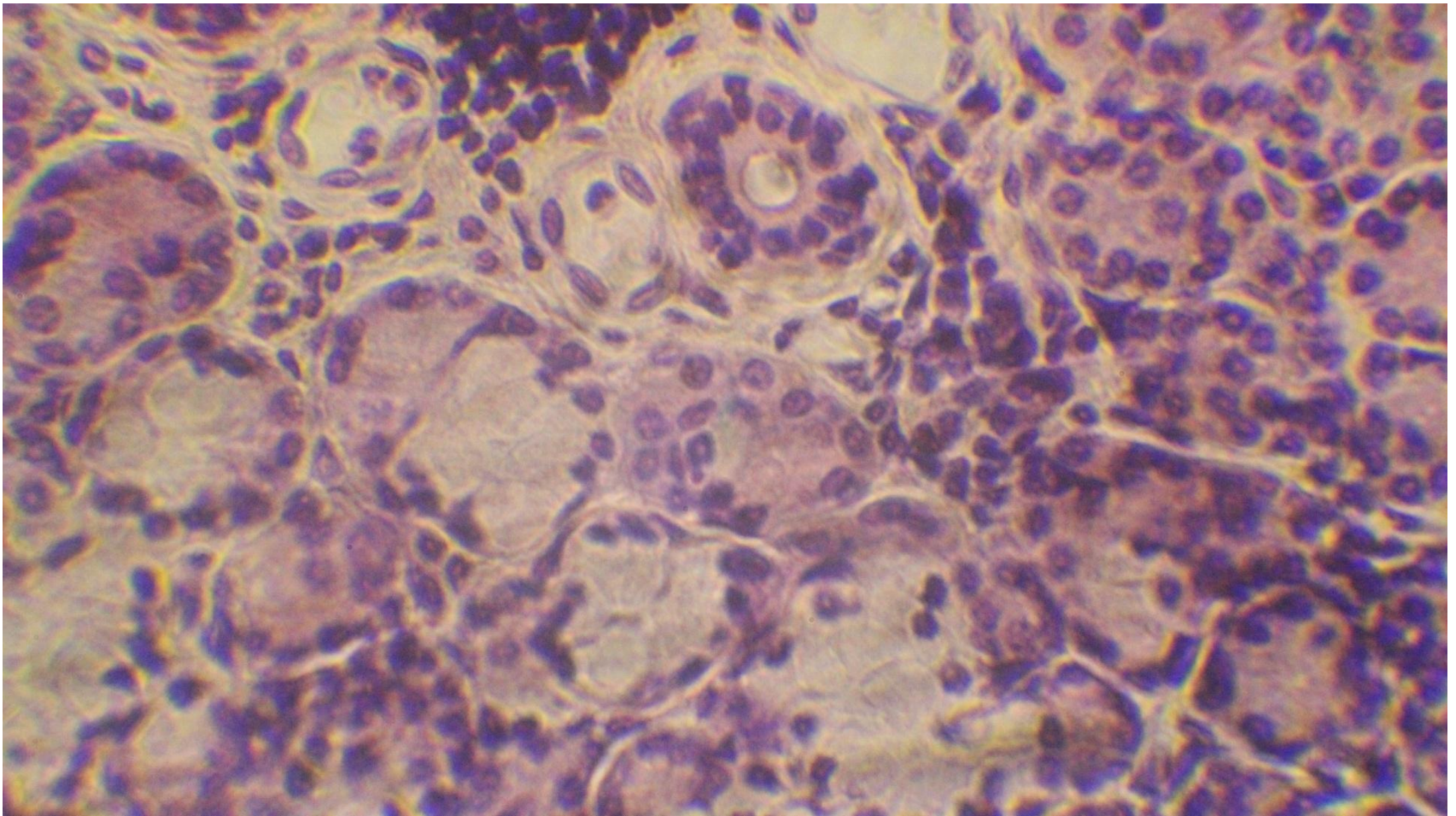
Striated duct



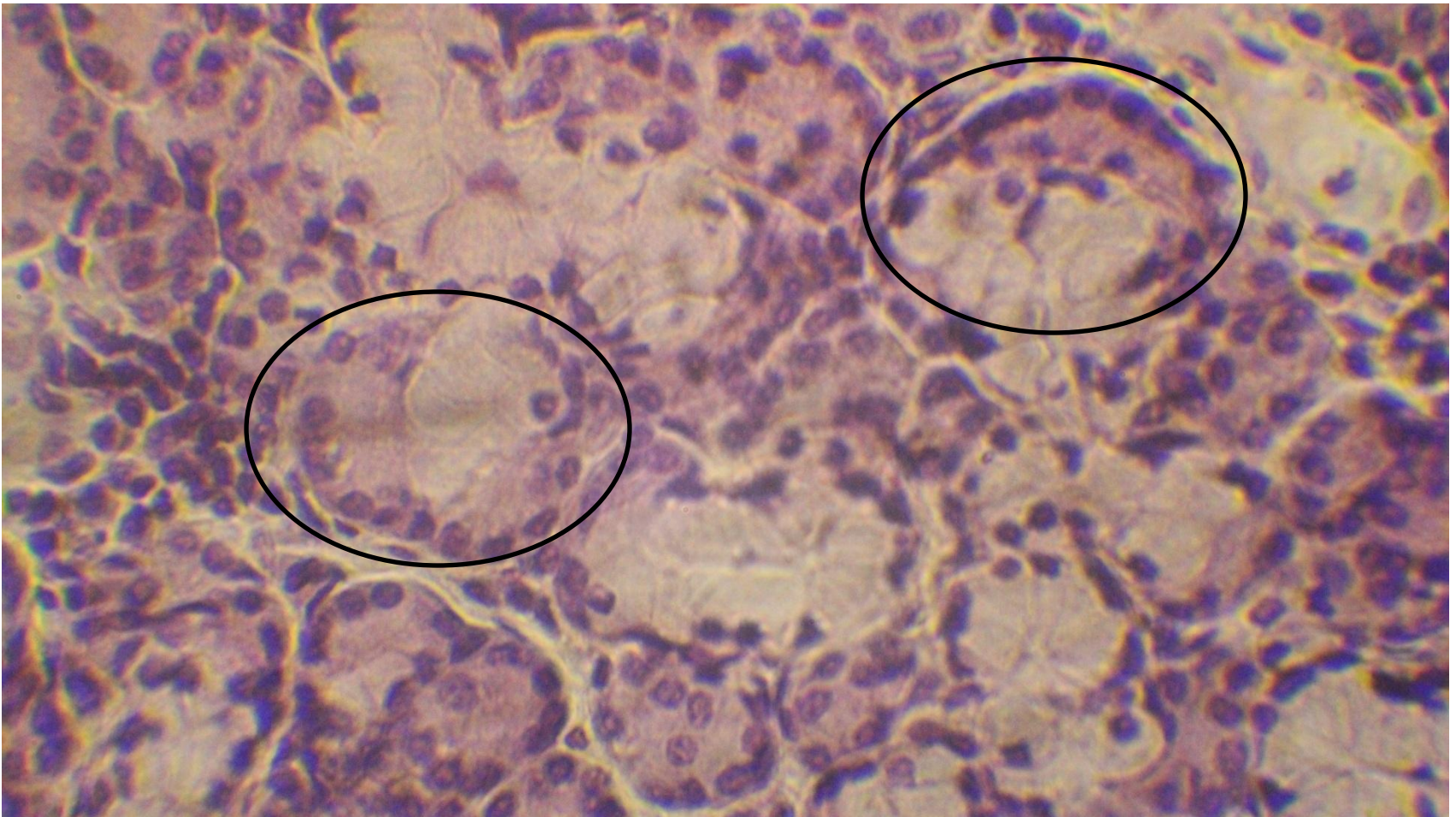
Submaxillary (submandibular) gland



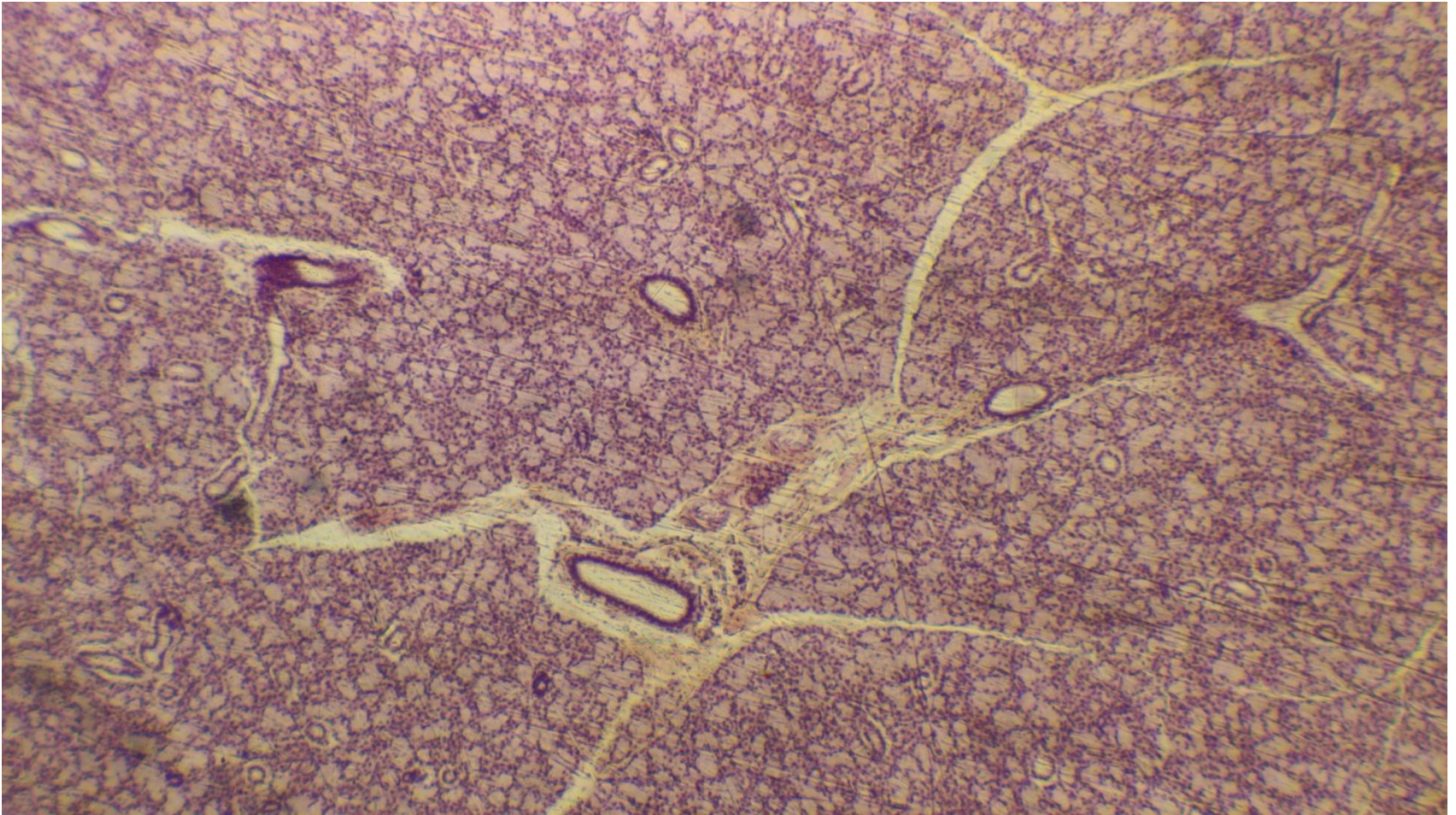
Intercalated duct (ID) and (serous demilune (mixed acinus)



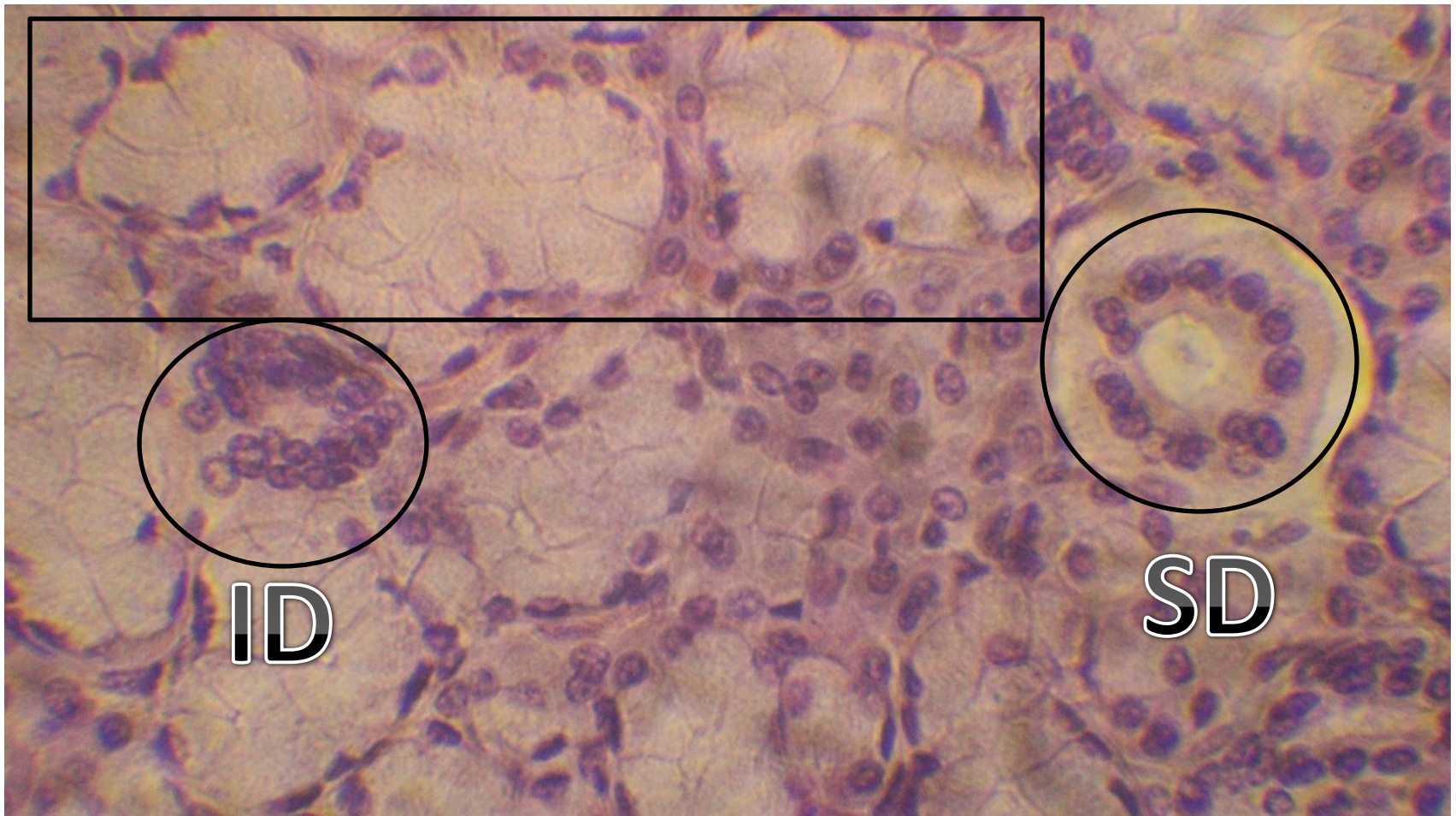
Serous demilune (mixed acini)



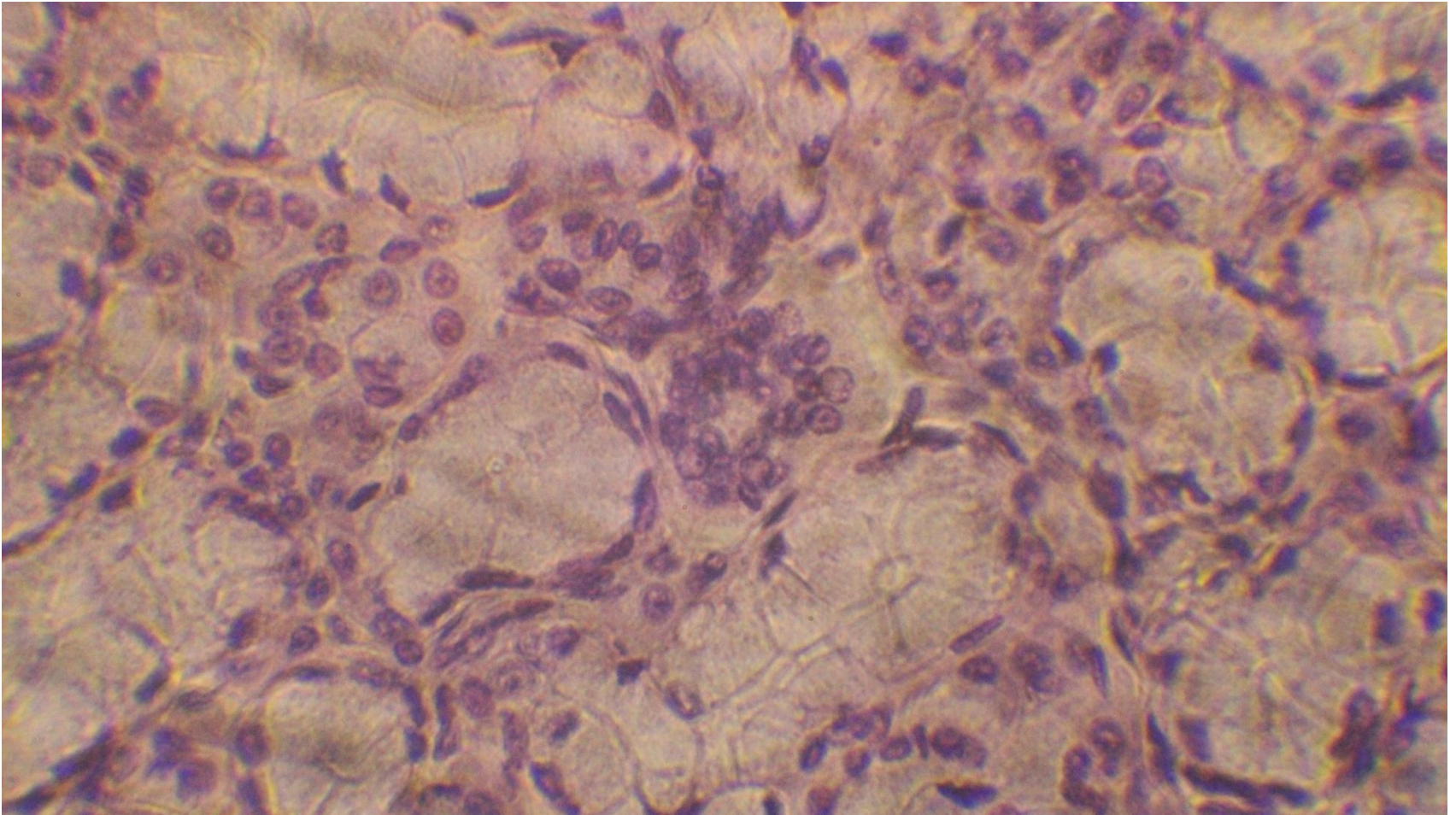
Sublingual gland



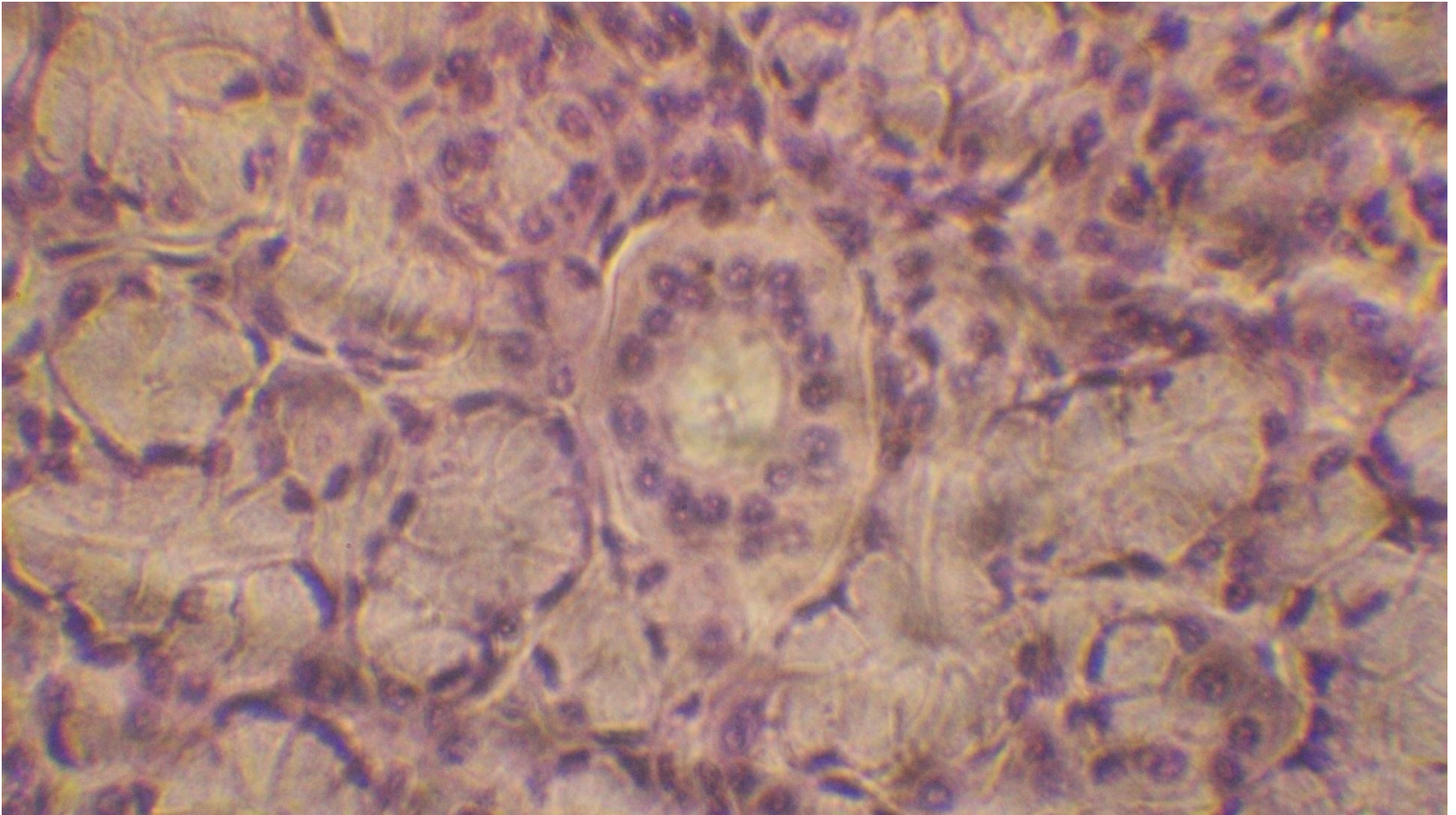
Mucous acini, striated and intercalated ducts



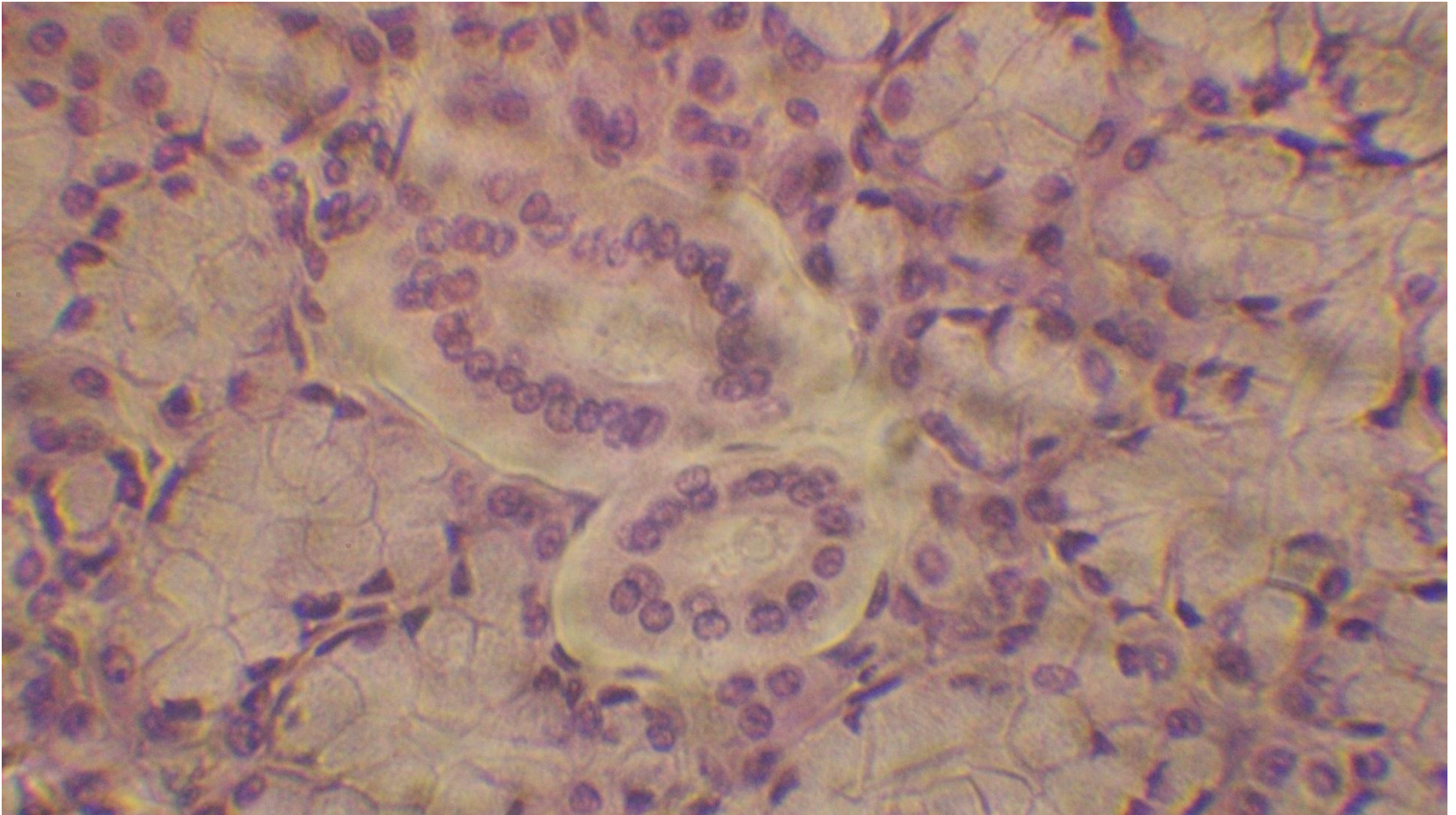
Mucous acini and ID



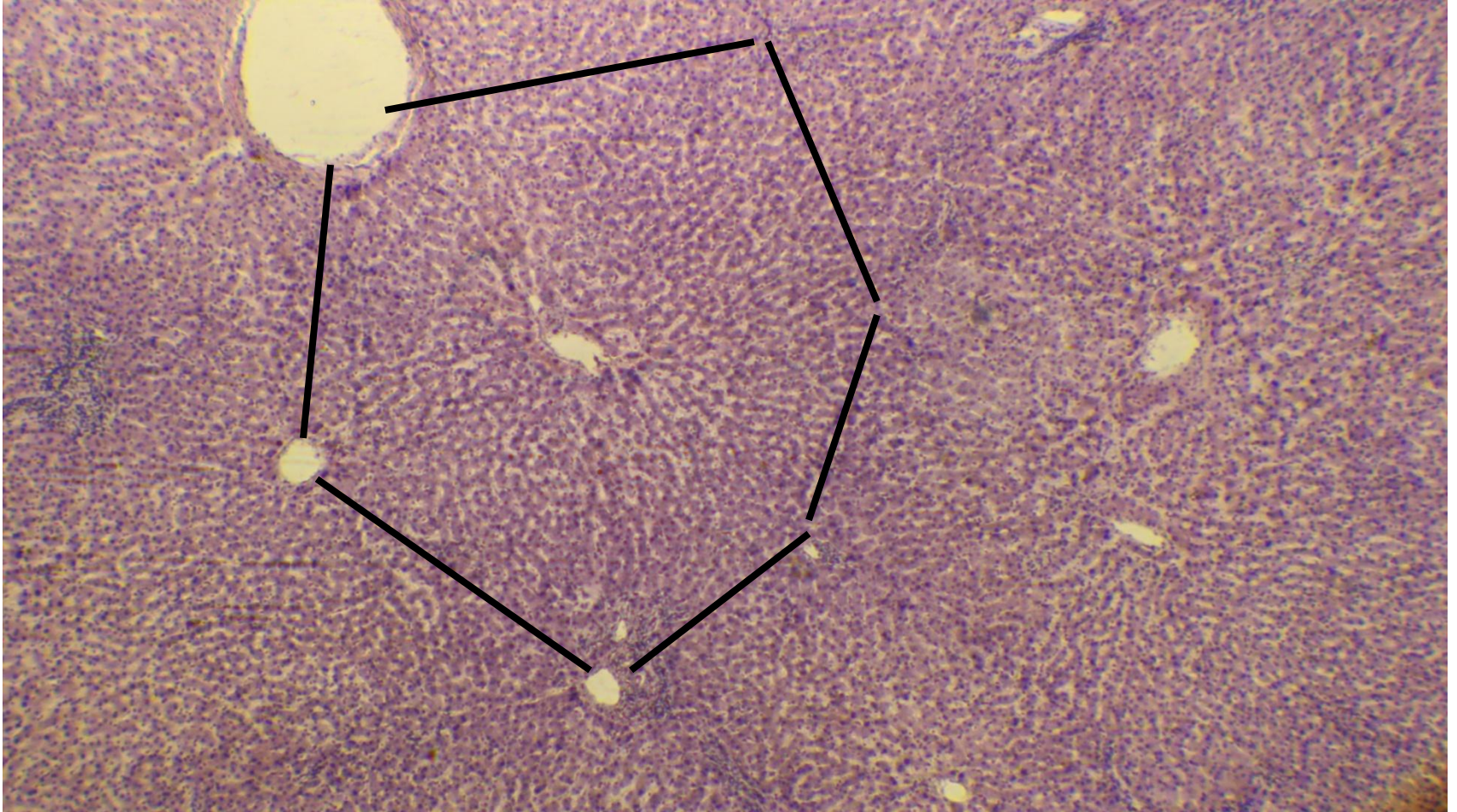
Striated duct



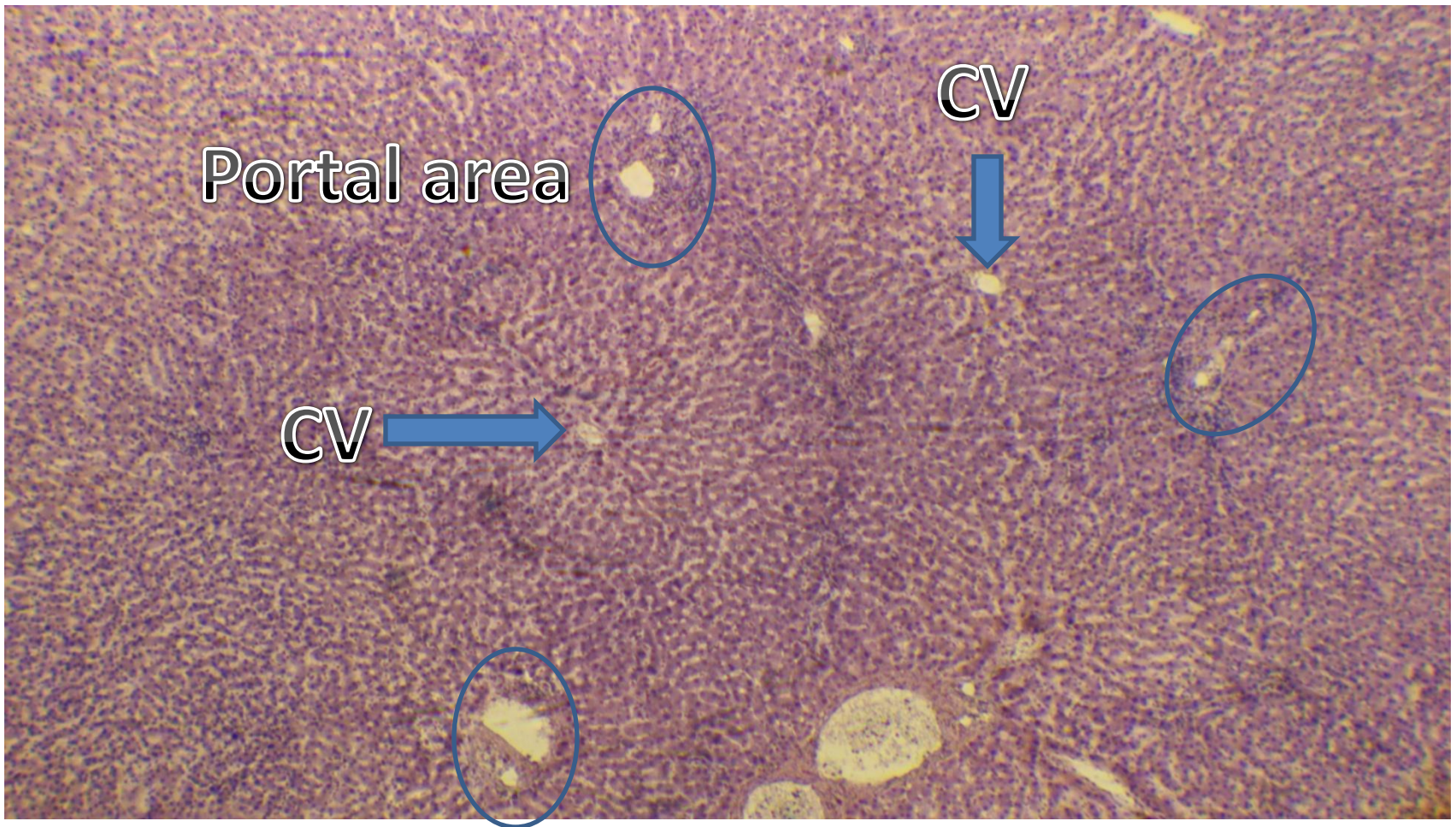
Mucous acini and striated ducts



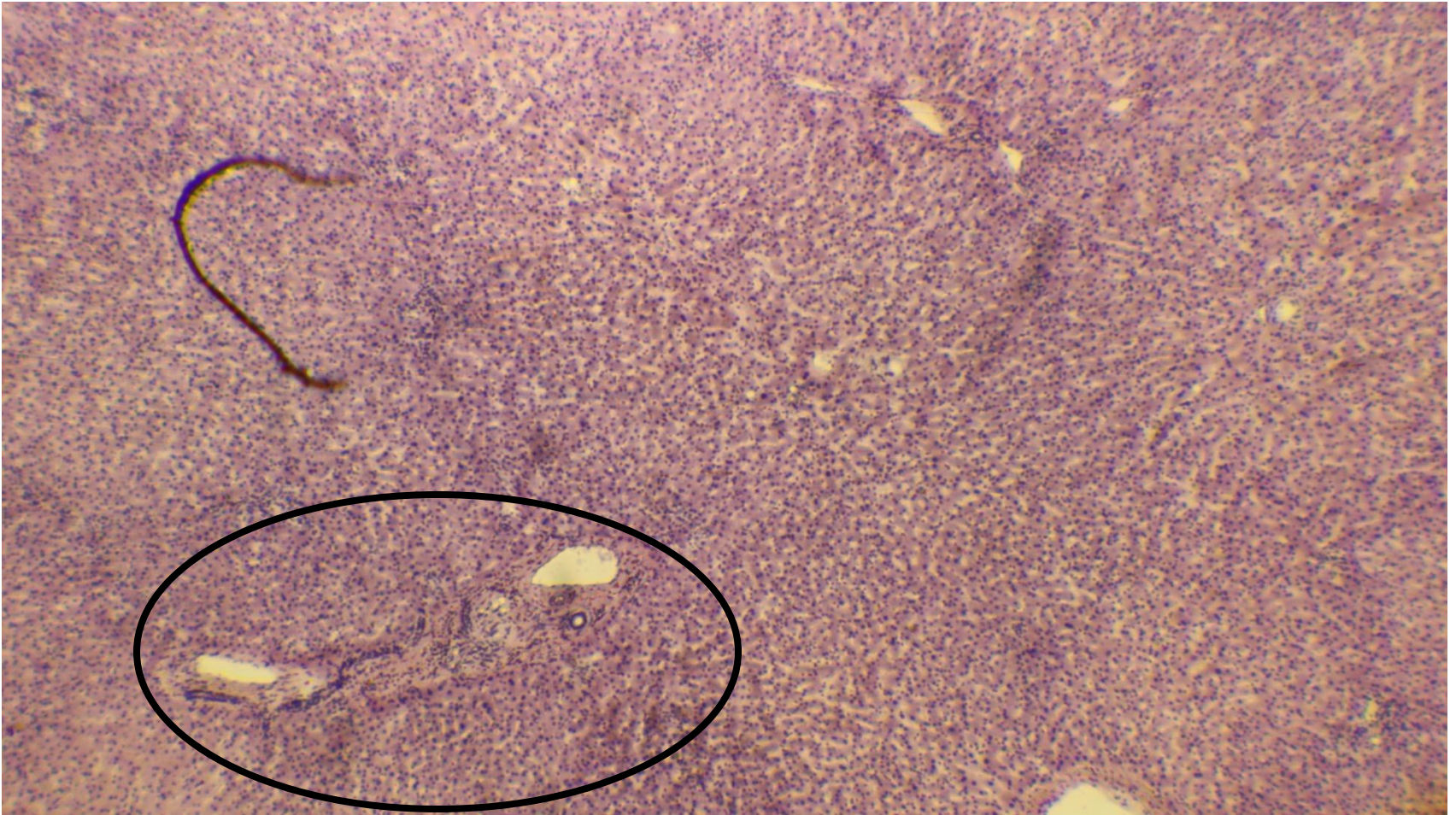
Liver, liver lobule



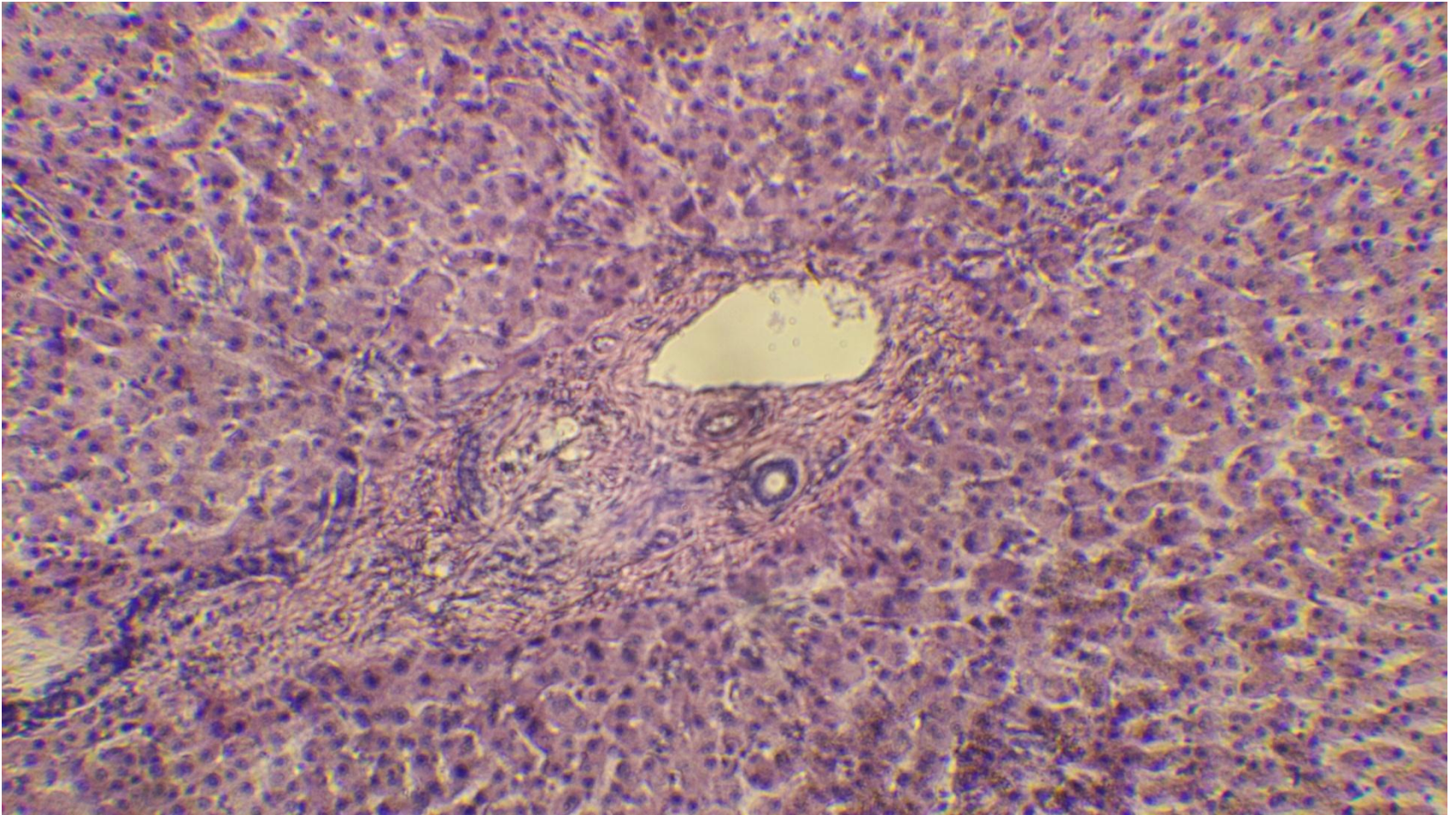
Liver, and liver lobule



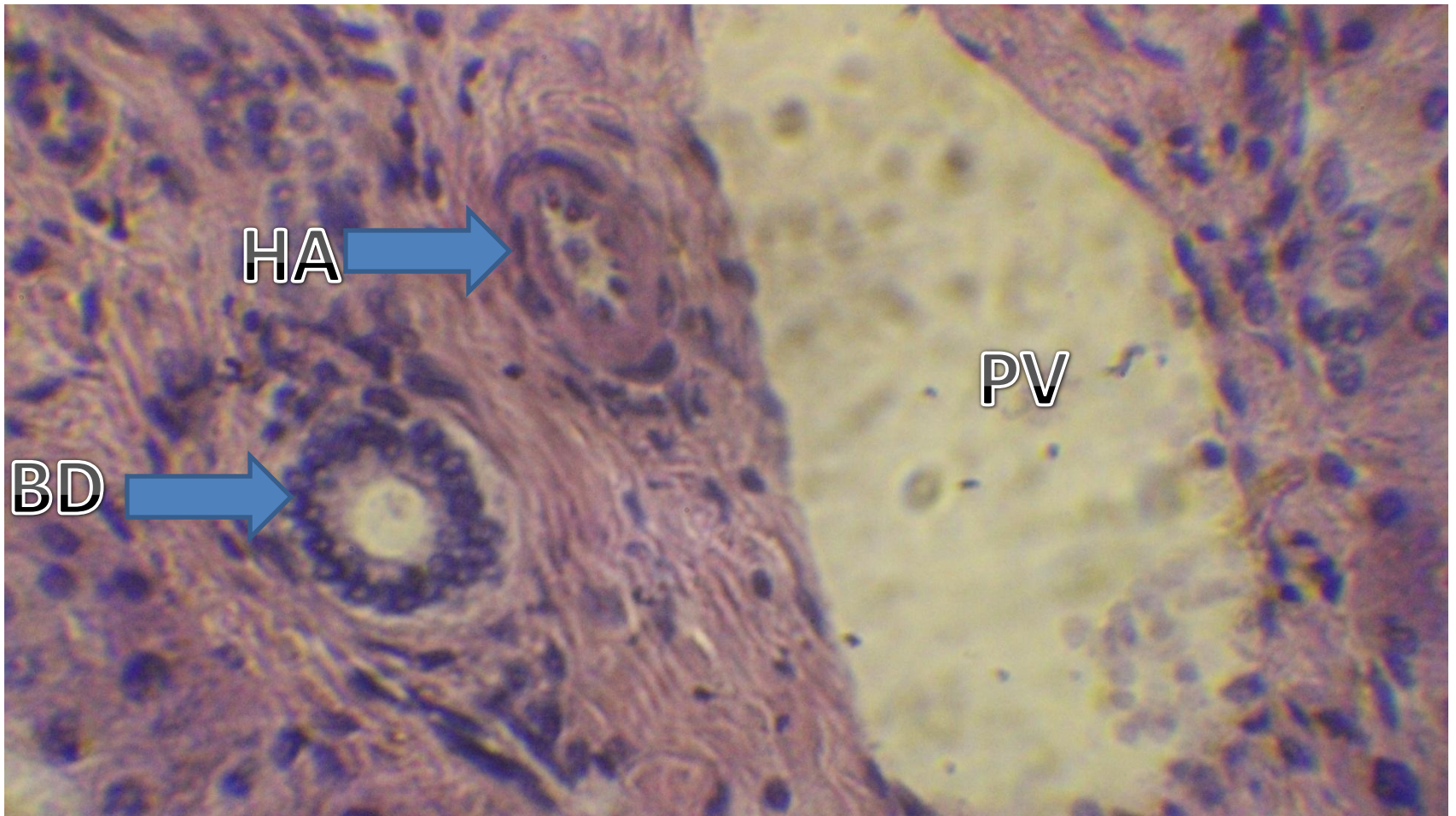
Portal area



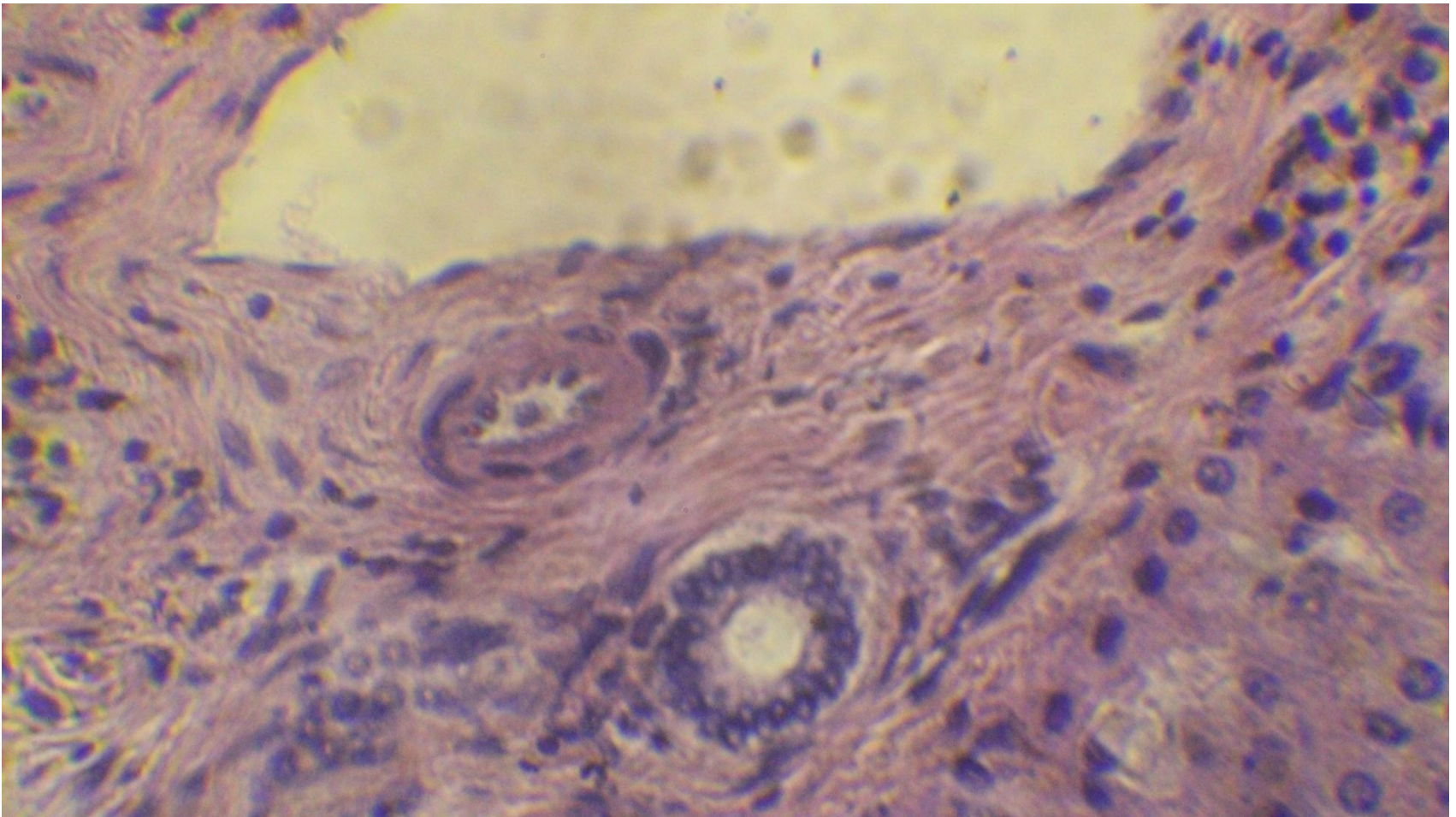
Portal area



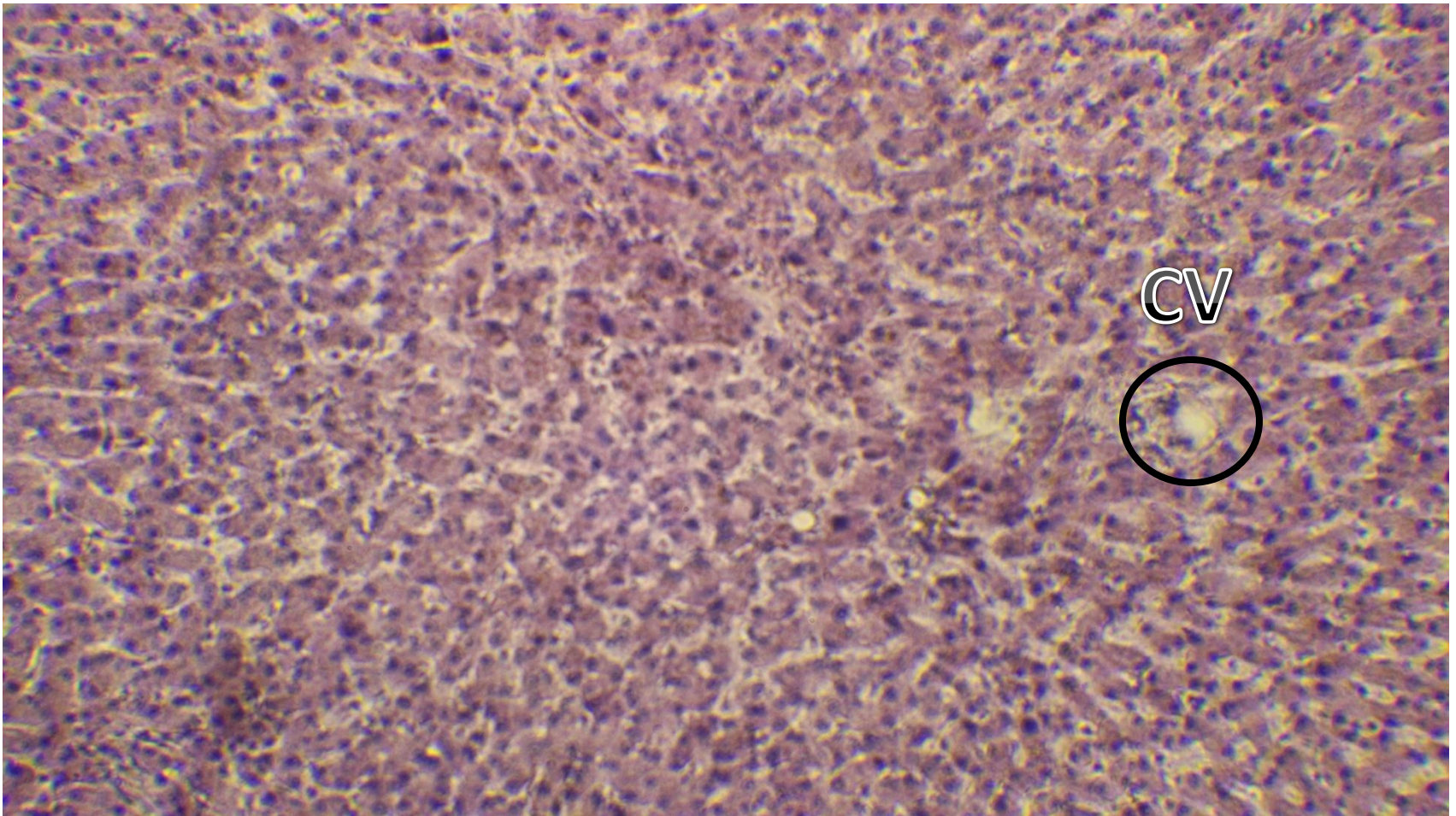
Portal area, portal venule (PV), hepatic arteriole (HA), and bile duct (BD)



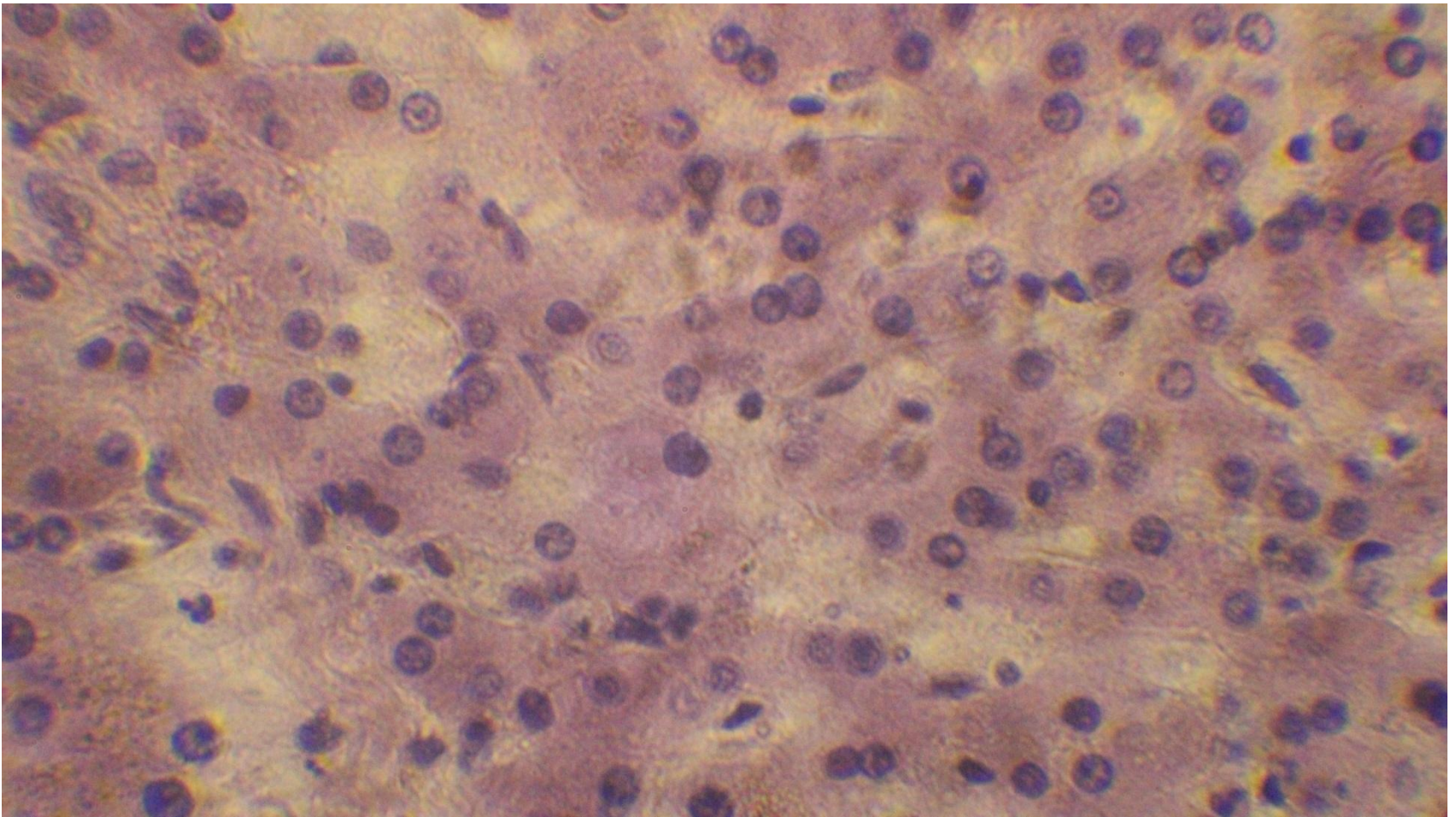
Portal area, portal venule, hepatic arteriole, and bile duct



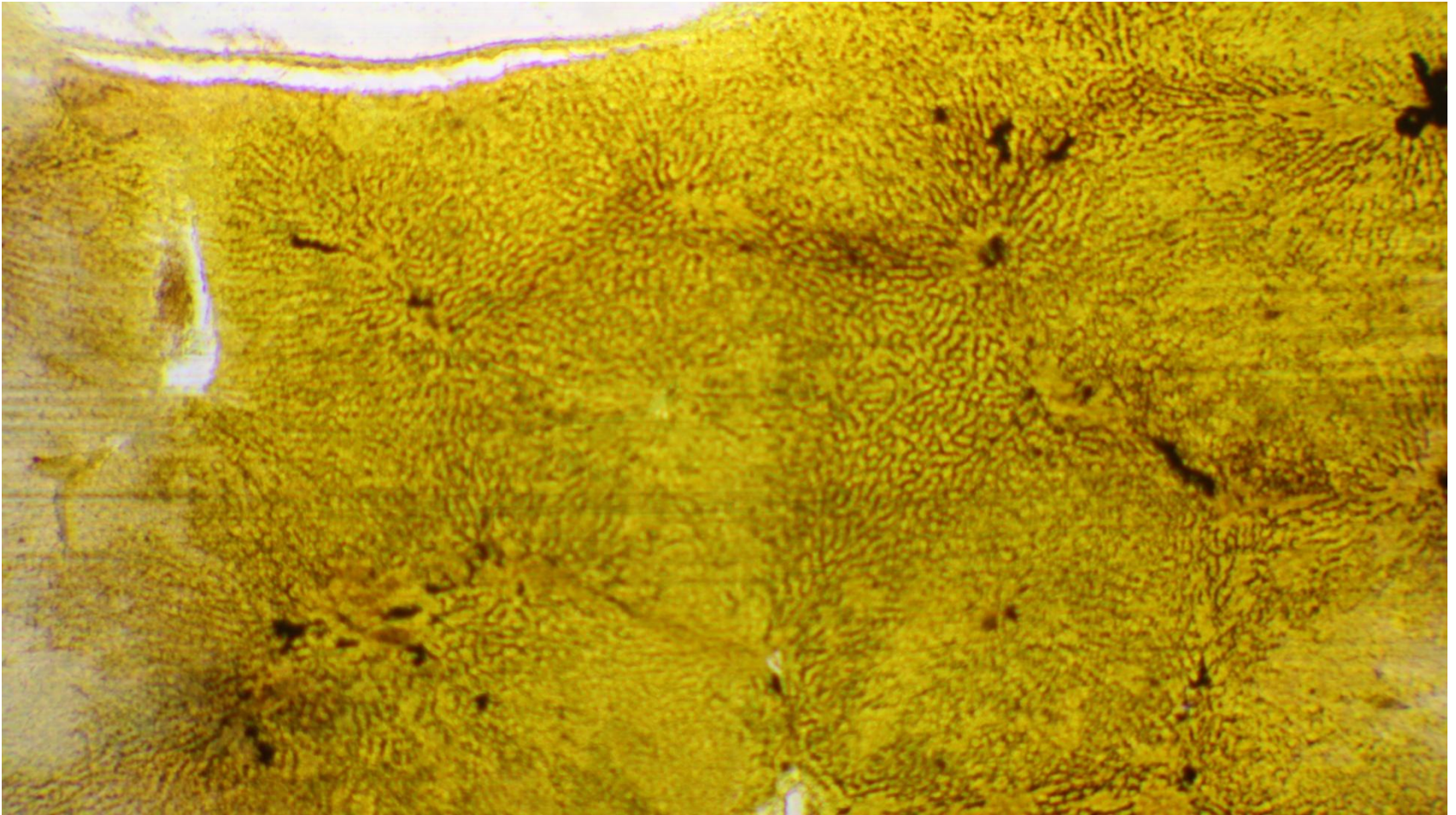
Hepatocytes and central vein (CV)



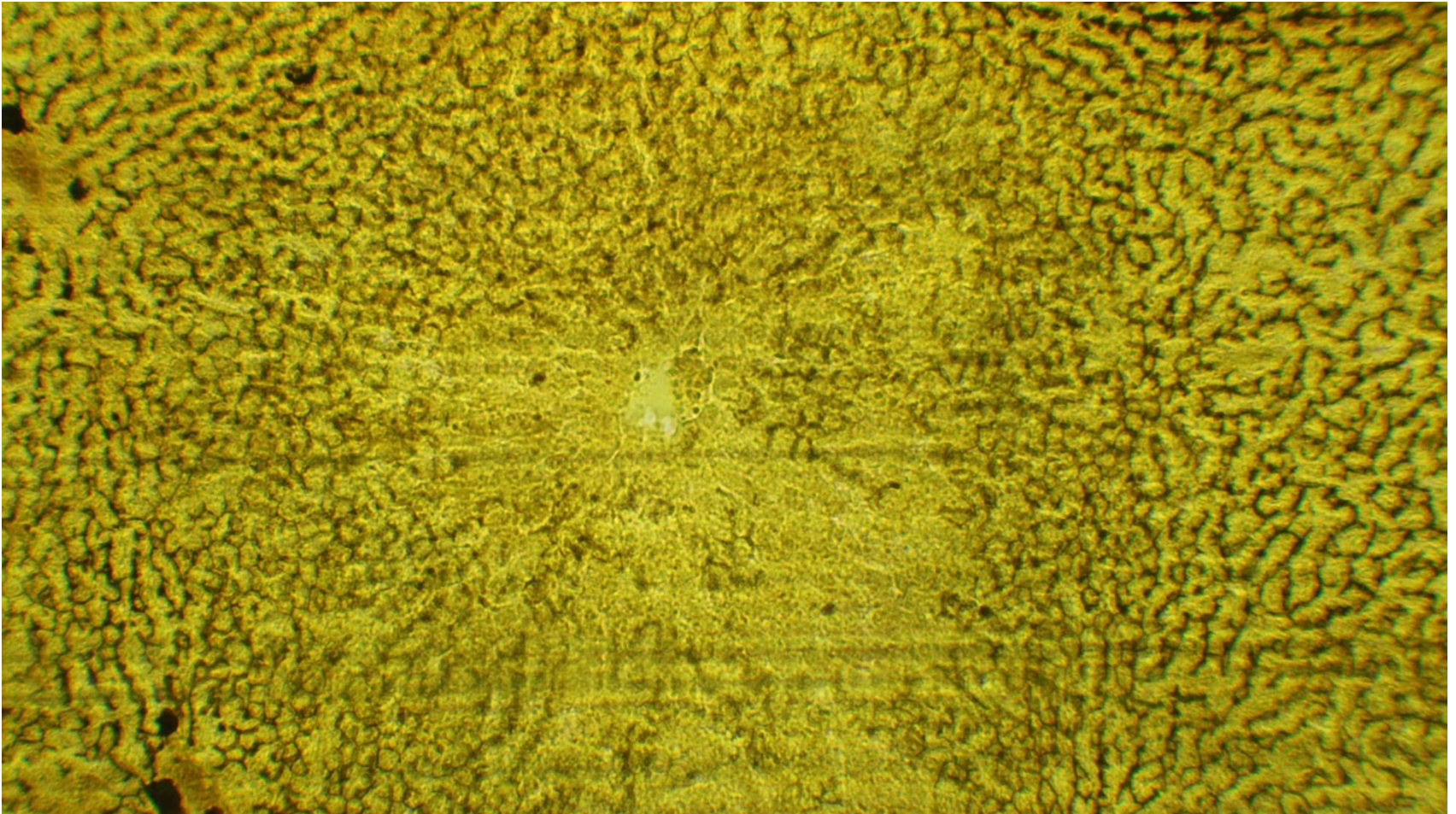
Liver sinusoids

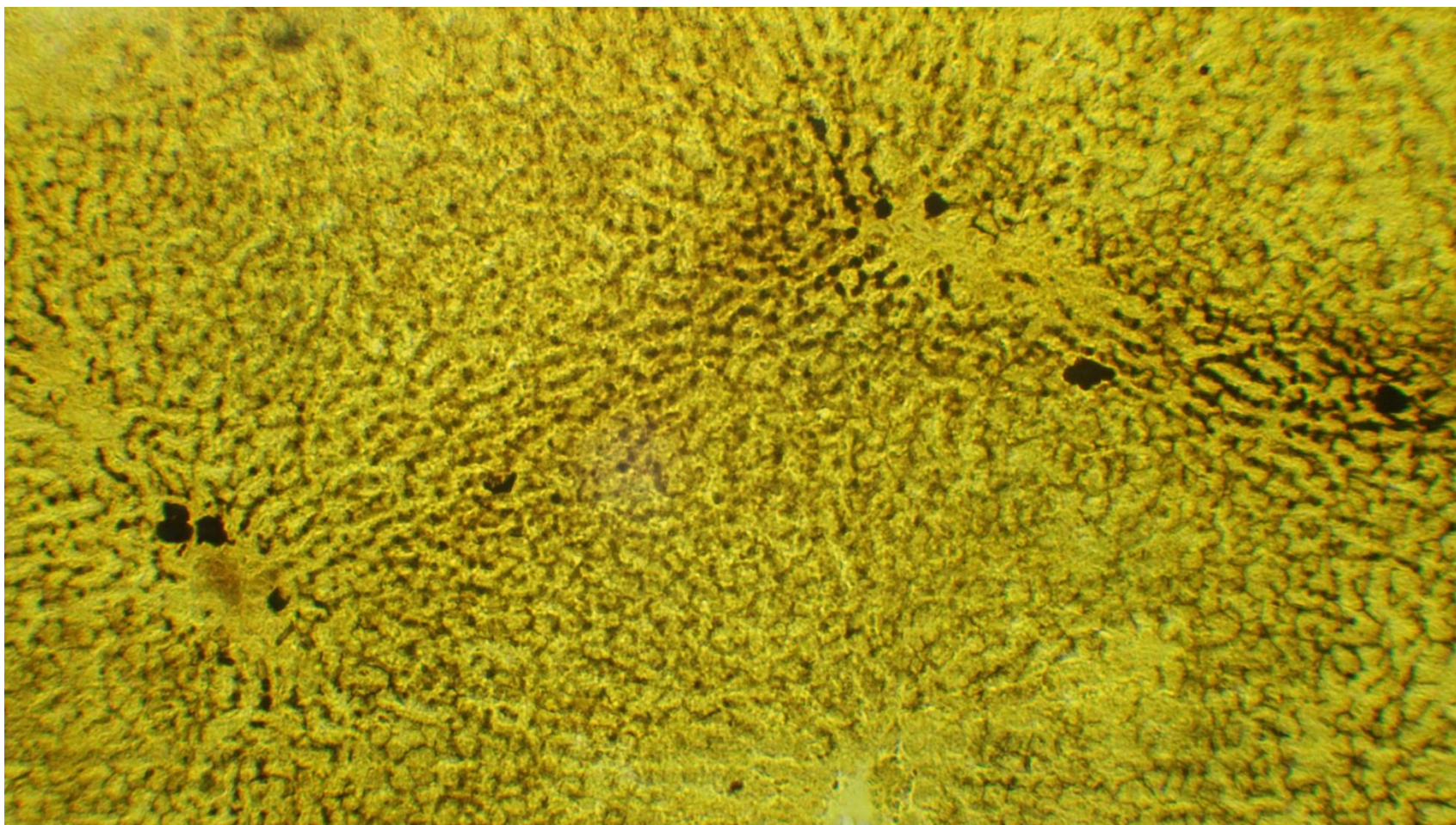


Bile canaliculous

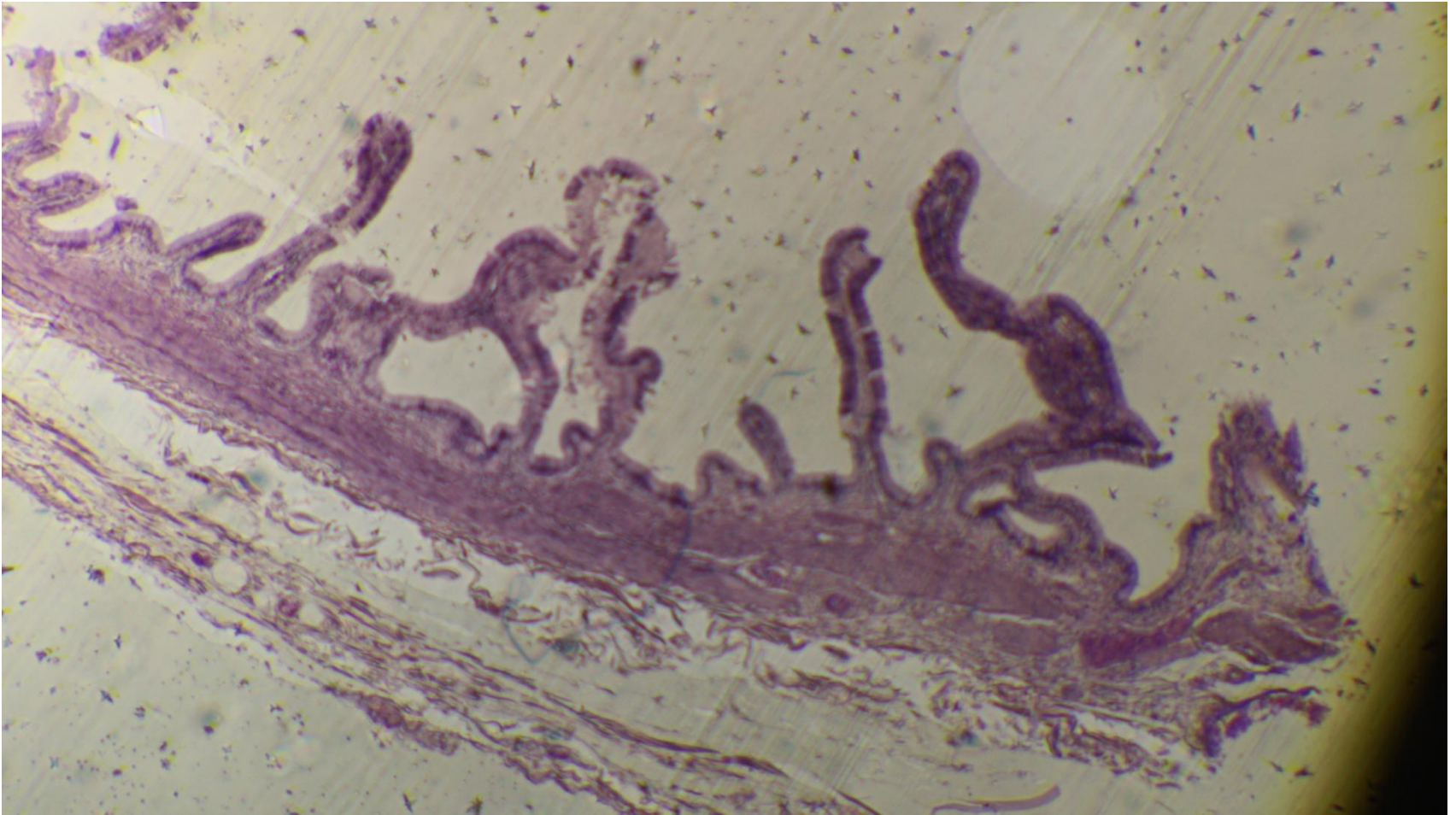


Bile canaliculous

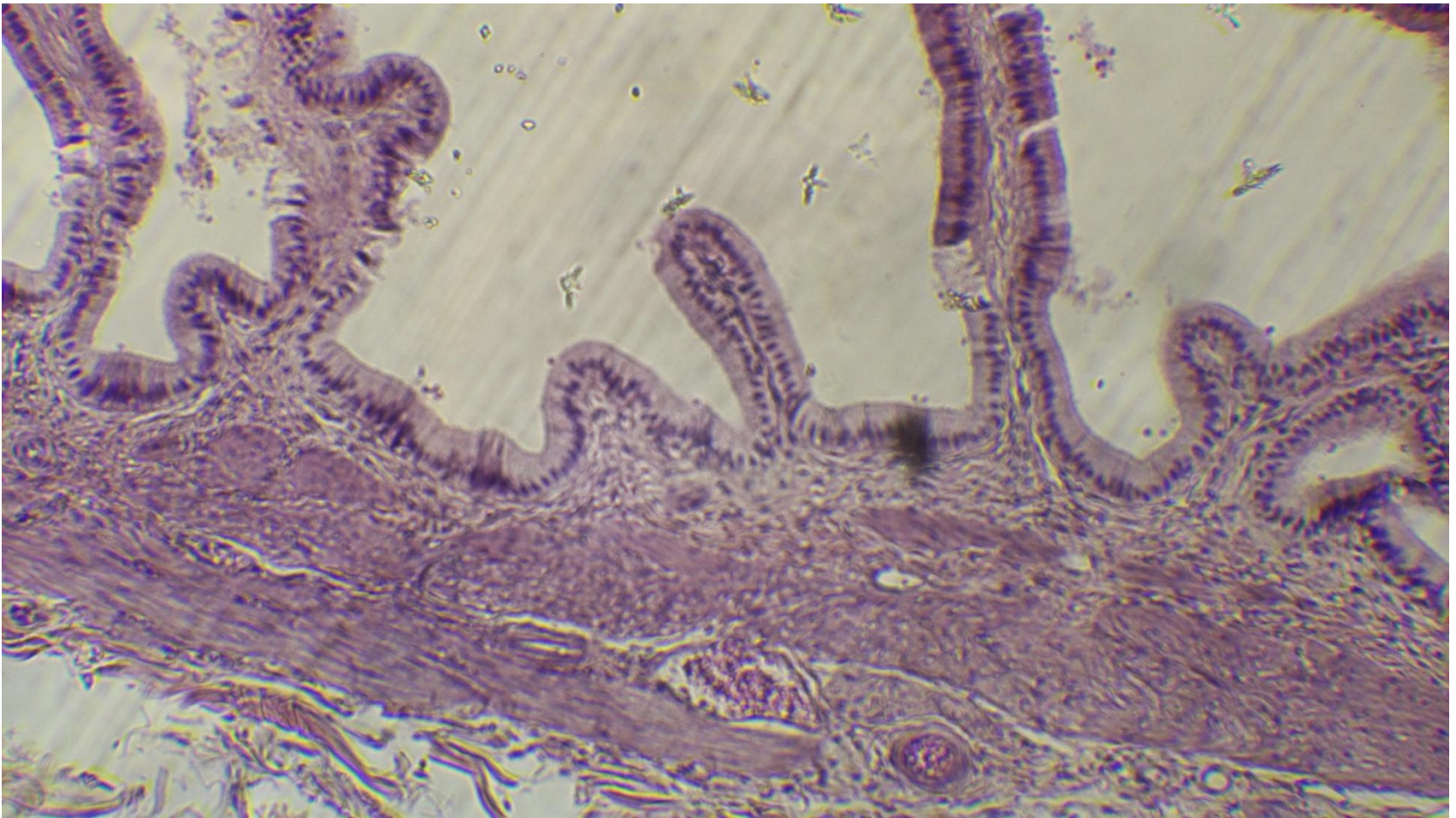




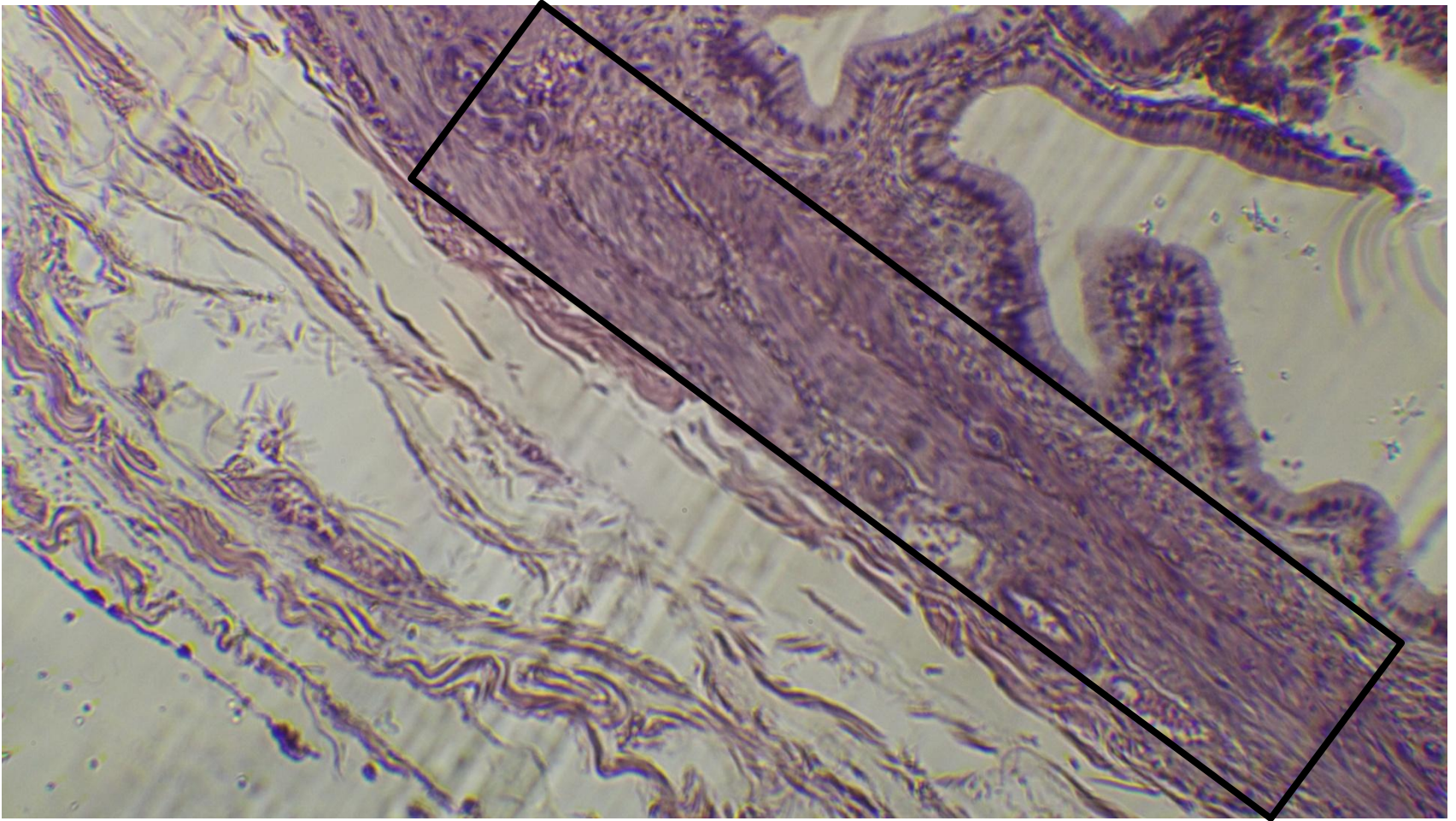
Gall bladder



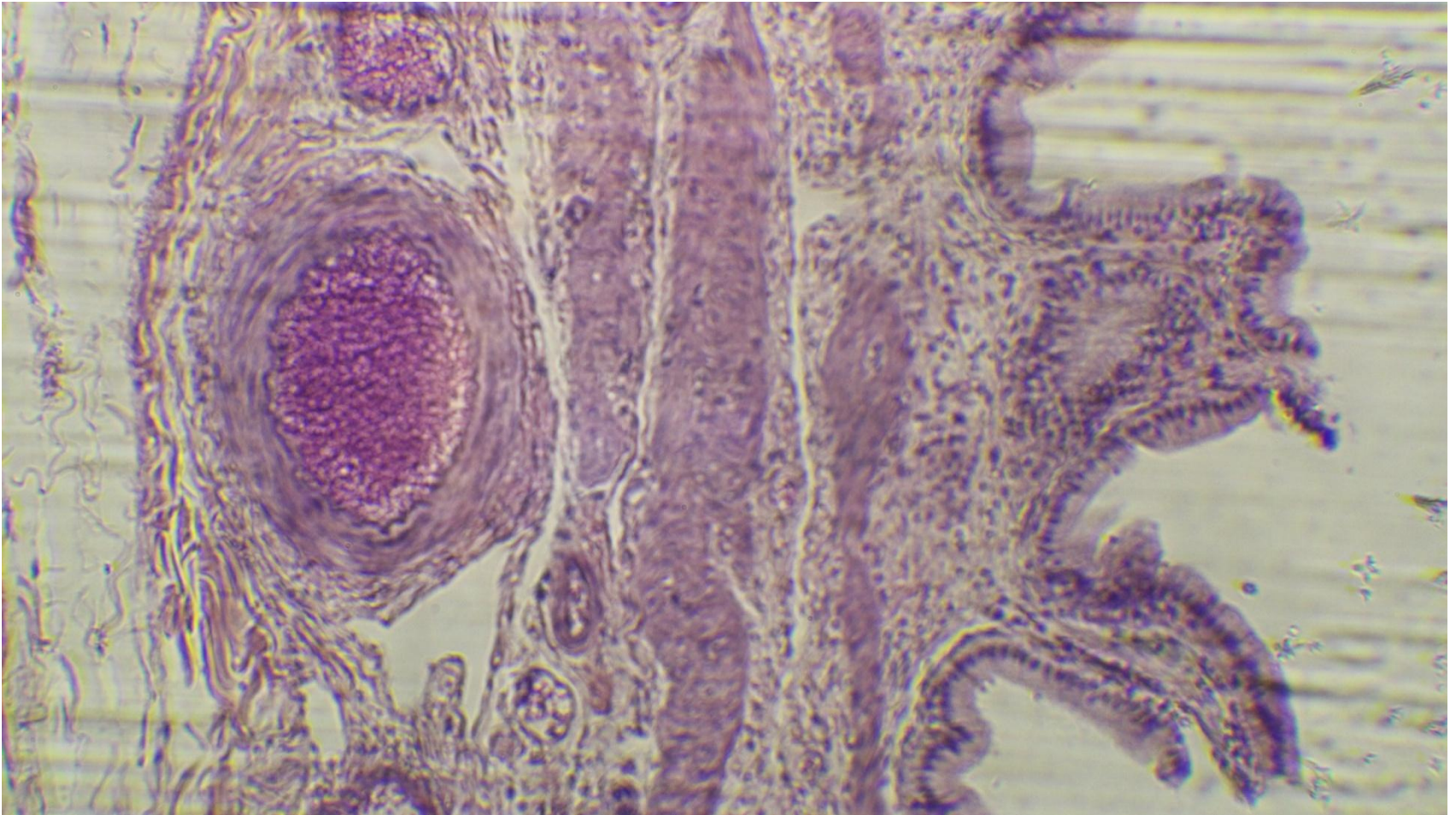
Lining epithelium (simple columnar epithelium)



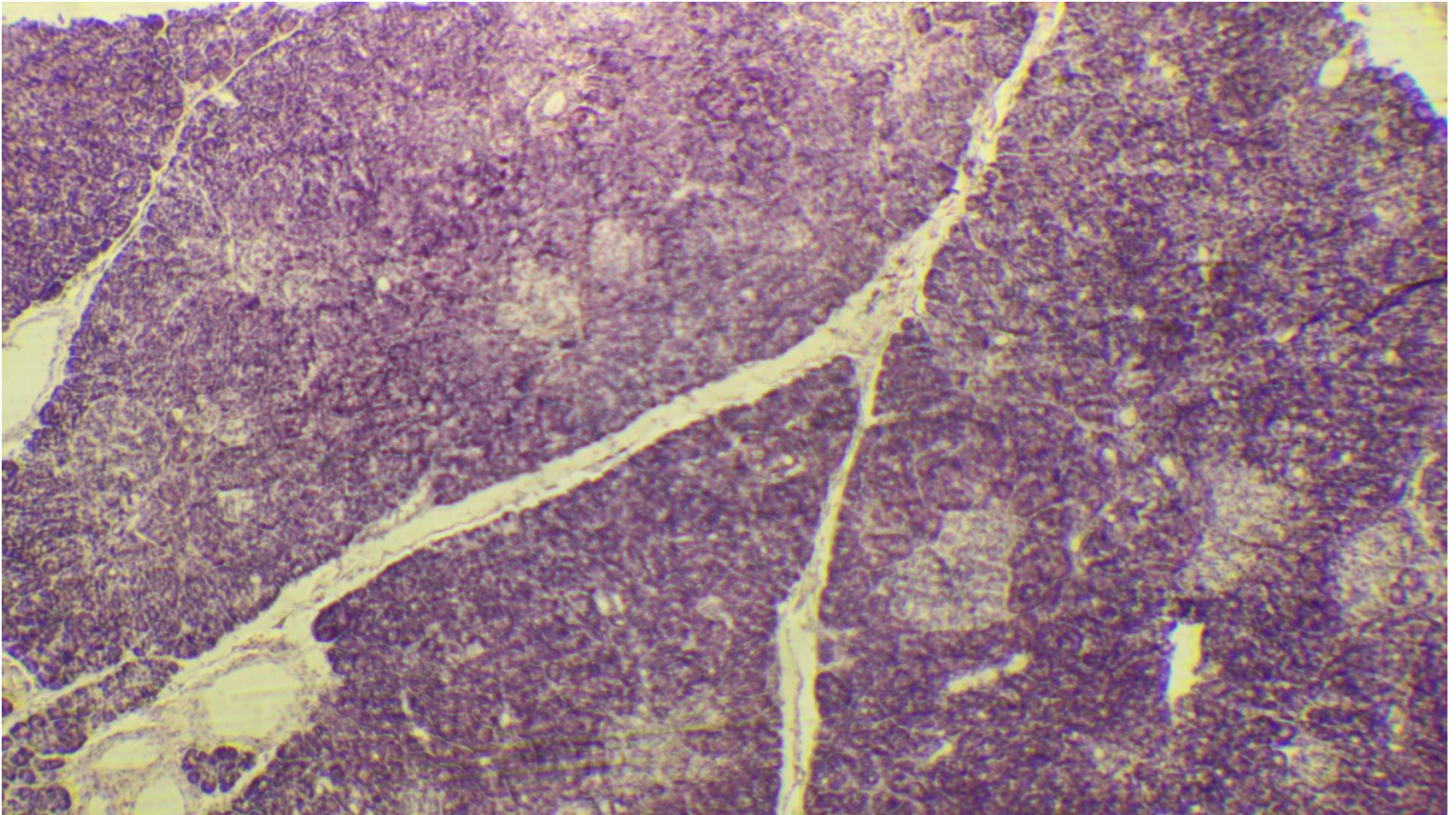
Fibro-muscular coat



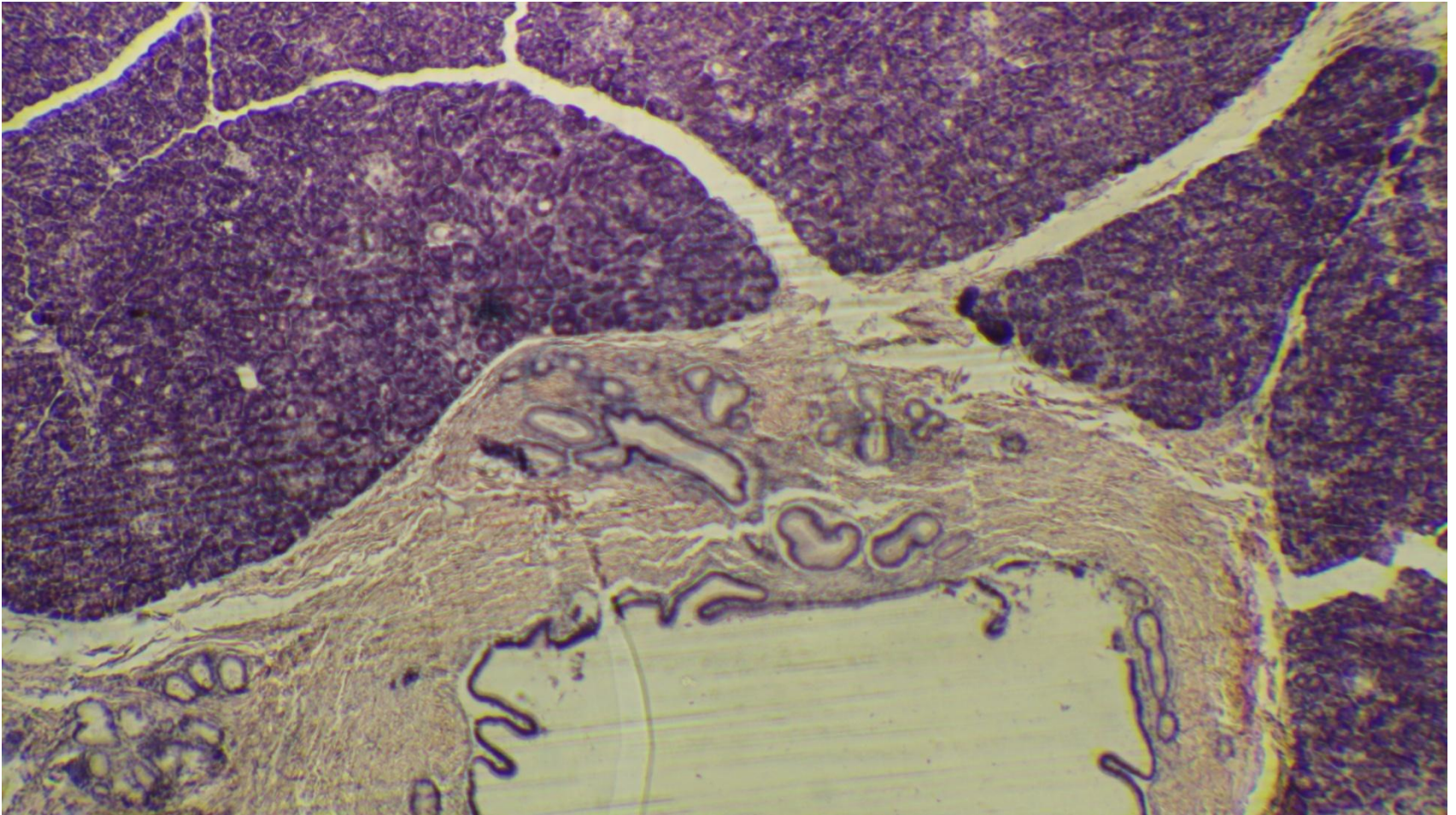
Blood supply



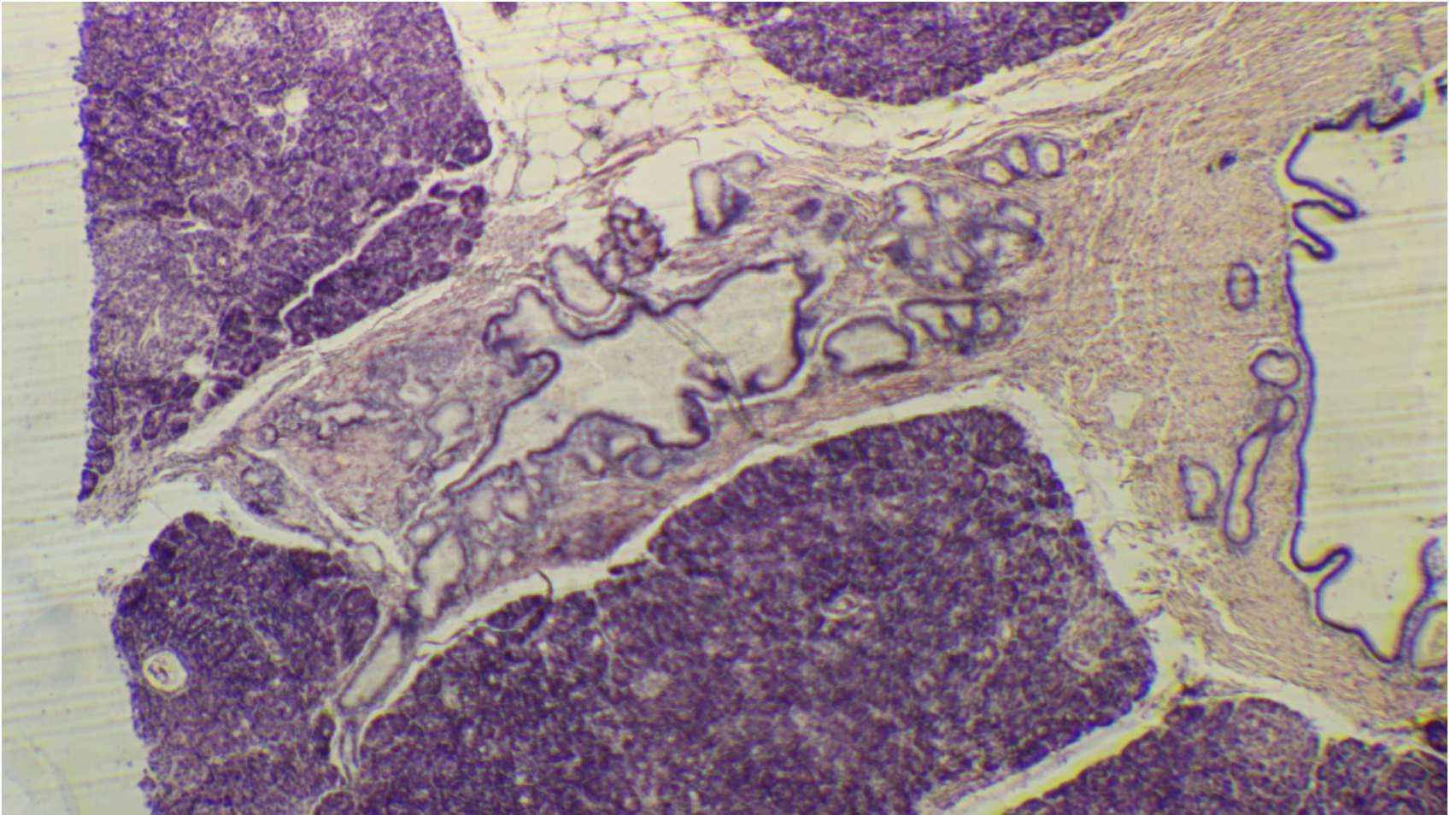
Pancreas



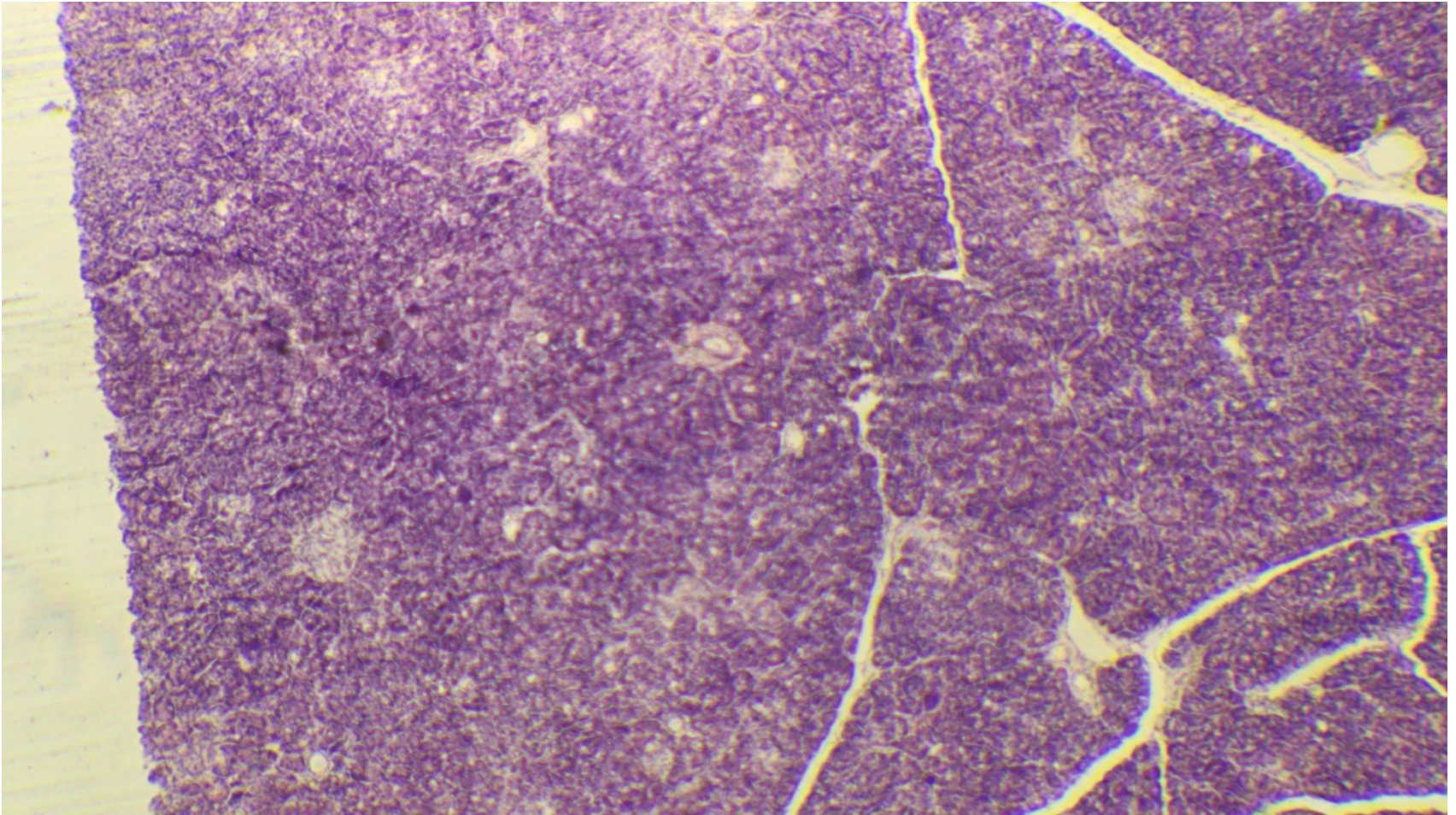
Pancreatic ducts

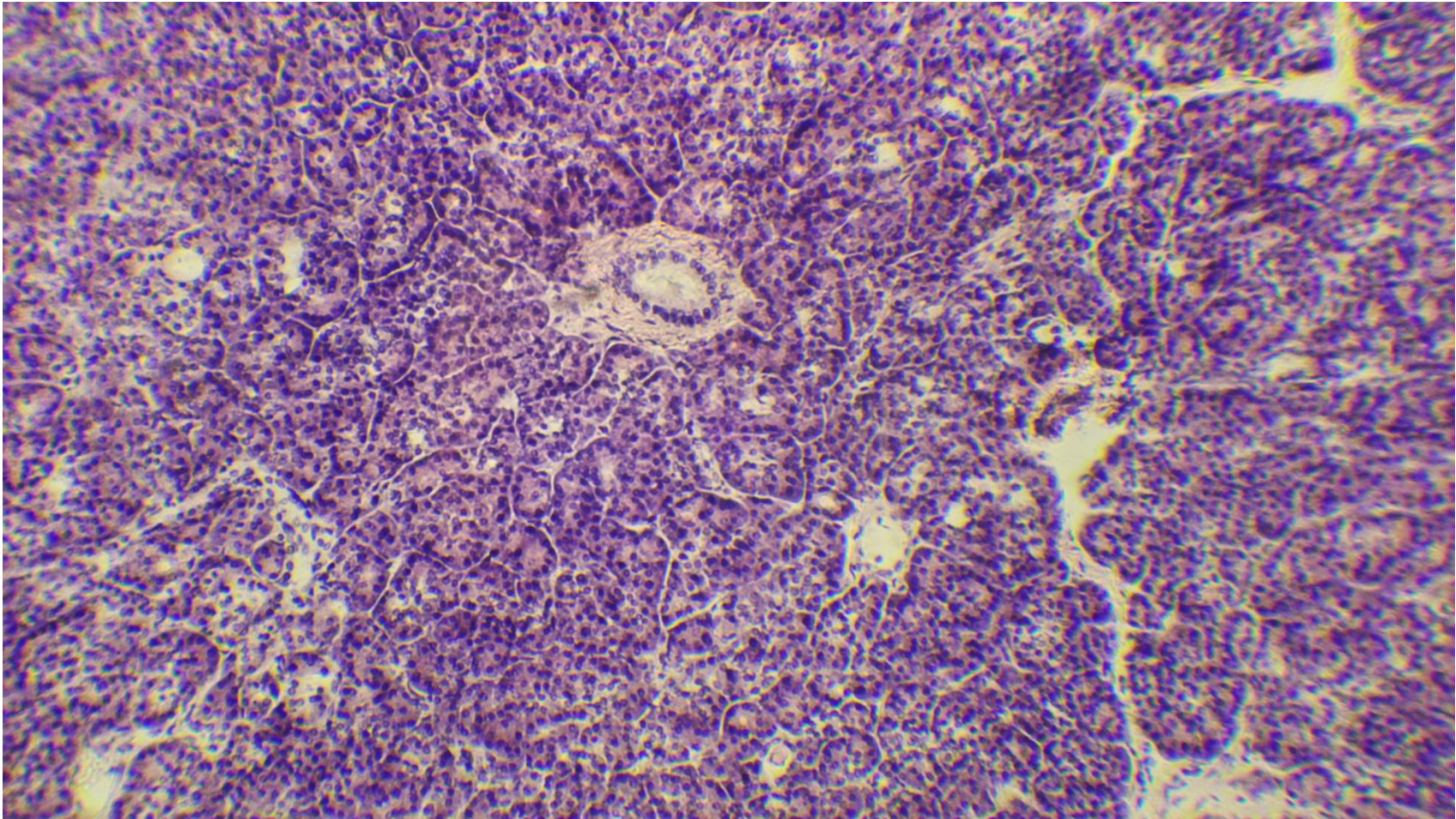


Pancreas and ductal system

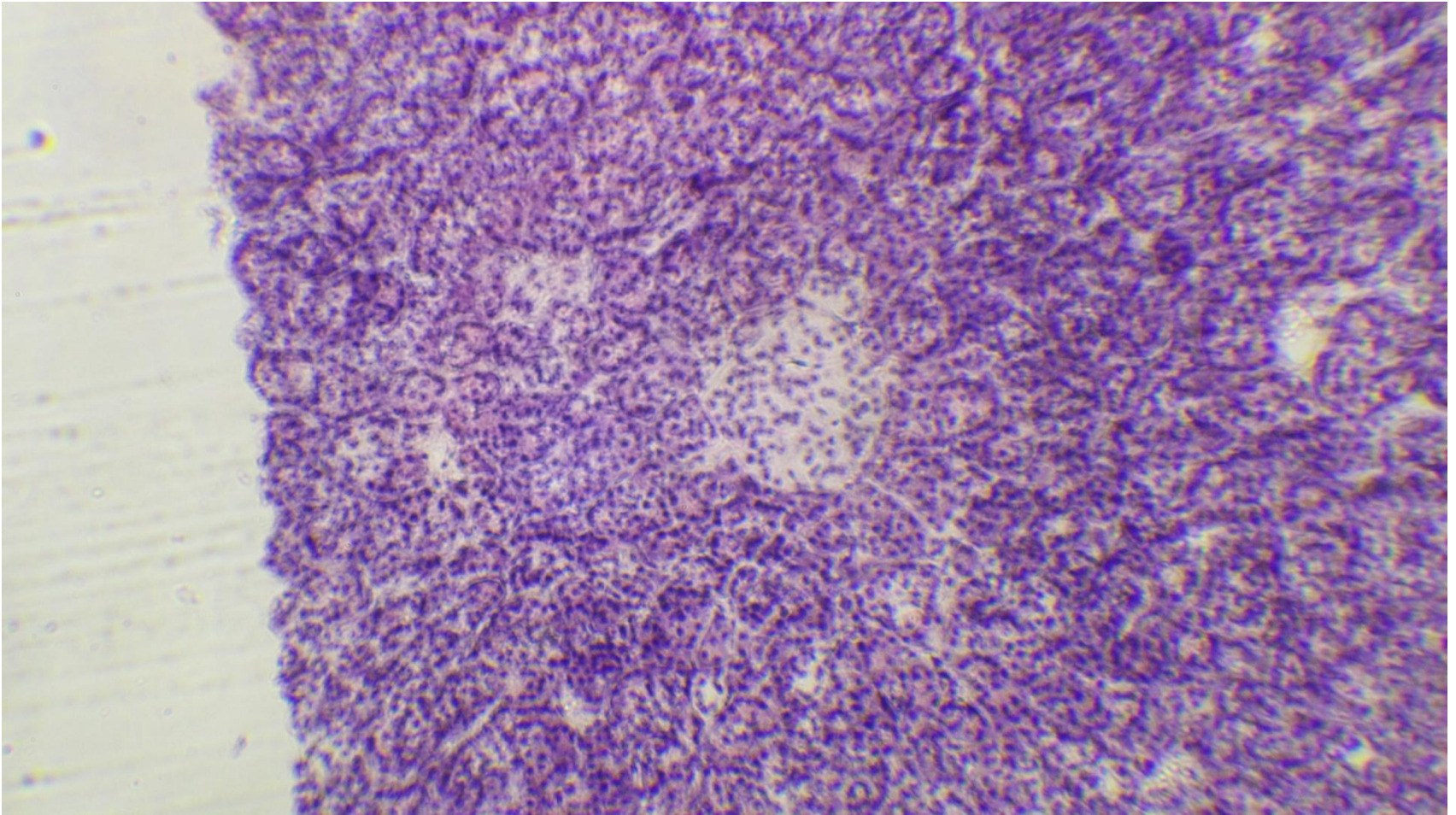


Pancreas, secretory part





Islet of Langerhans



Islet of langerhans and duct

