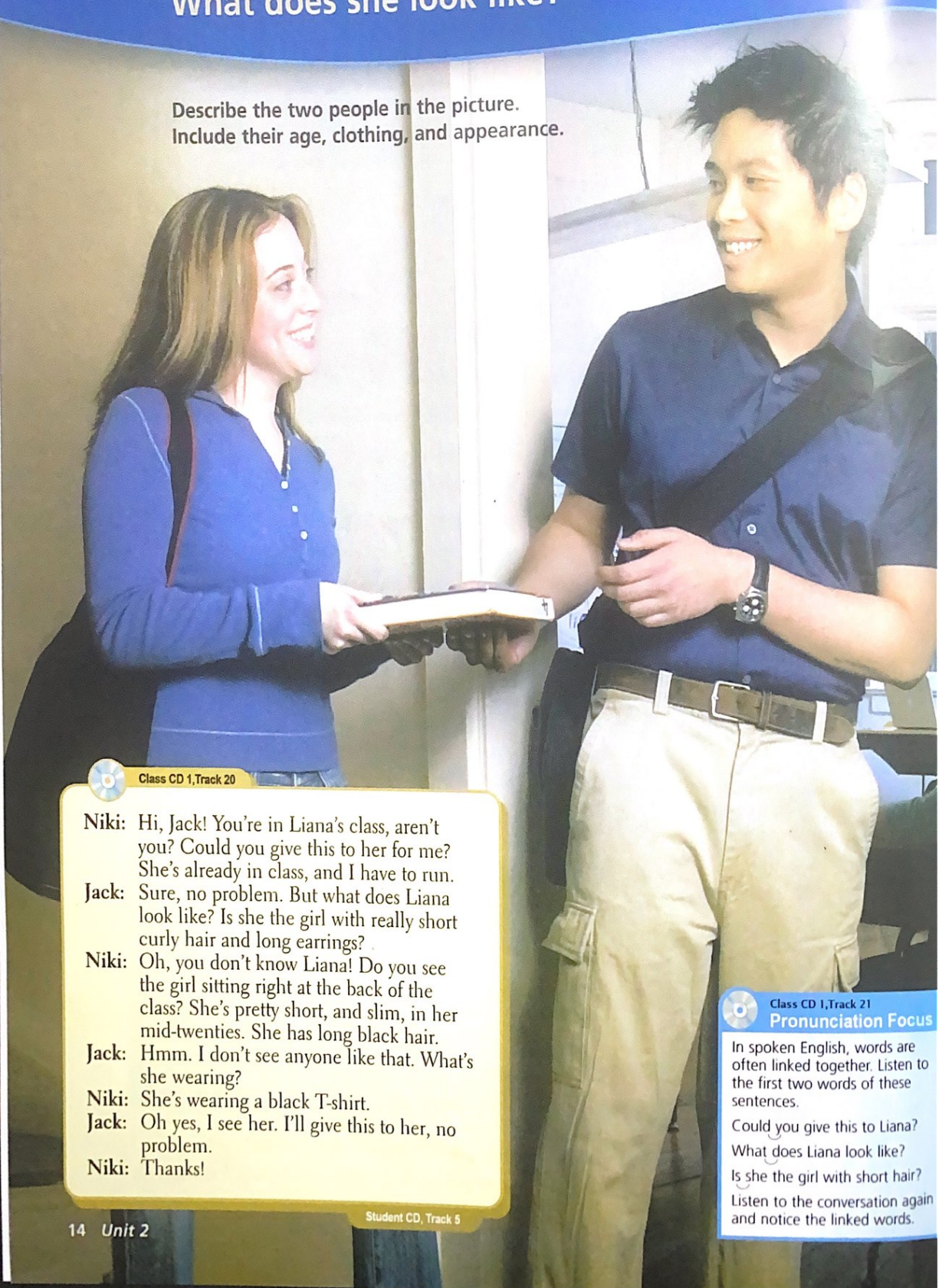


# Conversation 2

## What does she look like?

Describe the two people in the picture.  
Include their age, clothing, and appearance.



Class CD 1, Track 20

- Niki:** Hi, Jack! You're in Liana's class, aren't you? Could you give this to her for me? She's already in class, and I have to run.
- Jack:** Sure, no problem. But what does Liana look like? Is she the girl with really short curly hair and long earrings?
- Niki:** Oh, you don't know Liana! Do you see the girl sitting right at the back of the class? She's pretty short, and slim, in her mid-twenties. She has long black hair.
- Jack:** Hmm. I don't see anyone like that. What's she wearing?
- Niki:** She's wearing a black T-shirt.
- Jack:** Oh yes, I see her. I'll give this to her, no problem.
- Niki:** Thanks!



Class CD 1, Track 21

### Pronunciation Focus

In spoken English, words are often linked together. Listen to the first two words of these sentences.

Could you give this to Liana?

What does Liana look like?

Is she the girl with short hair?

Listen to the conversation again and notice the linked words.



## GIVE IT A TRY

### 1. Asking about age

How old is she?  
he?  
How old are they?

Pretty young. She's in her early teens.  
Kind of old. He's in his mid-twenties.  
Middle-aged. They're in their late forties.

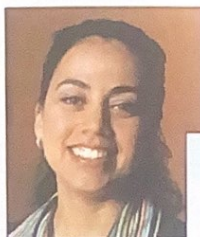
#### PRACTICE 1

Class CD 1  
Track 22

Listen to the example. Then choose one of the pictures below. Describe the person's age. Your partner will guess who you are describing.

A: She's pretty young. She's in her early twenties.

B: That's Vicky.



Vicky



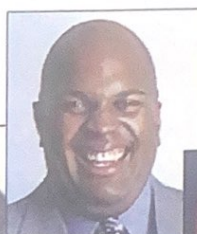
Samira



Tony



Mike



Dexter



Pauline

#### PRACTICE 2

Ask your partner the ages of three famous people. Reverse roles.

### 2. Asking for a description

What does he / she look like?  
What do they look like?

What color is his / her hair?

What's his / her hair like?

He's fairly tall / short.  
She's pretty slim / heavy.  
They're kind of tall and thin.

It's blonde / black / gray.  
He has brown / red / gray hair.  
He's bald.

It's long / short / medium length.  
It's straight / wavy / curly.  
She has long curly hair.

#### PRACTICE

Class CD 1  
Track 23

Listen to the example. Then look at the pictures from Practice 1. Describe one of them to your partner. Your partner will guess who you are describing. Reverse roles.

A: She has shoulder length, wavy brown hair.

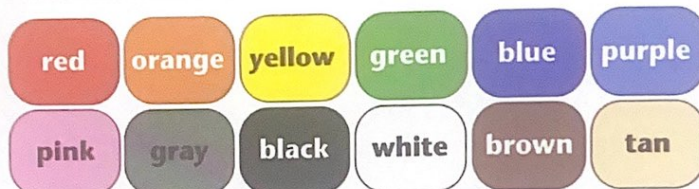
B: That's Vicky.

### 3. Describing clothing

What is he / she wearing?  
 What are they wearing?  
 What does he / she have on?  
 What do they have on?

He's wearing jeans and a blue T-shirt.  
 She's wearing black pants and a green sports shirt.  
 They're wearing a black skirt and a red top.  
 a navy blue uniform.  
 raincoats.

He has a brown jacket on.  
 She has a red skirt on.  
 They have winter clothes on.

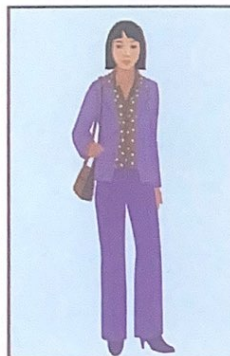
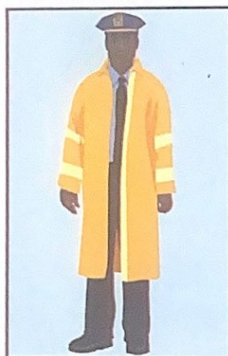
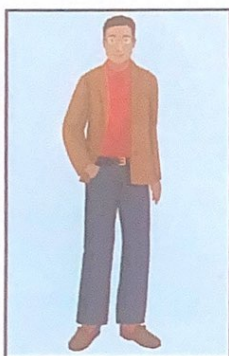


#### Use These Words

jacket tie  
 hat scarf  
 suit belt  
 glasses socks  
 purse dress

#### PRACTICE

Choose one of the people below and describe his or her clothing to your partner.



#### LISTEN TO THIS

**Part 1** Three people saw a man driving a motorcycle through the flower garden at City Hall. A police officer is asking about his description. What questions do you think he will ask?

Class CD 1  
 Track 24

**Part 2** Listen to three different people describing the man. Fill in the chart below.

	Height	Weight	Age	Hair	Clothing
1					
2					
3					

**Part 3** What do you think the man looked like?

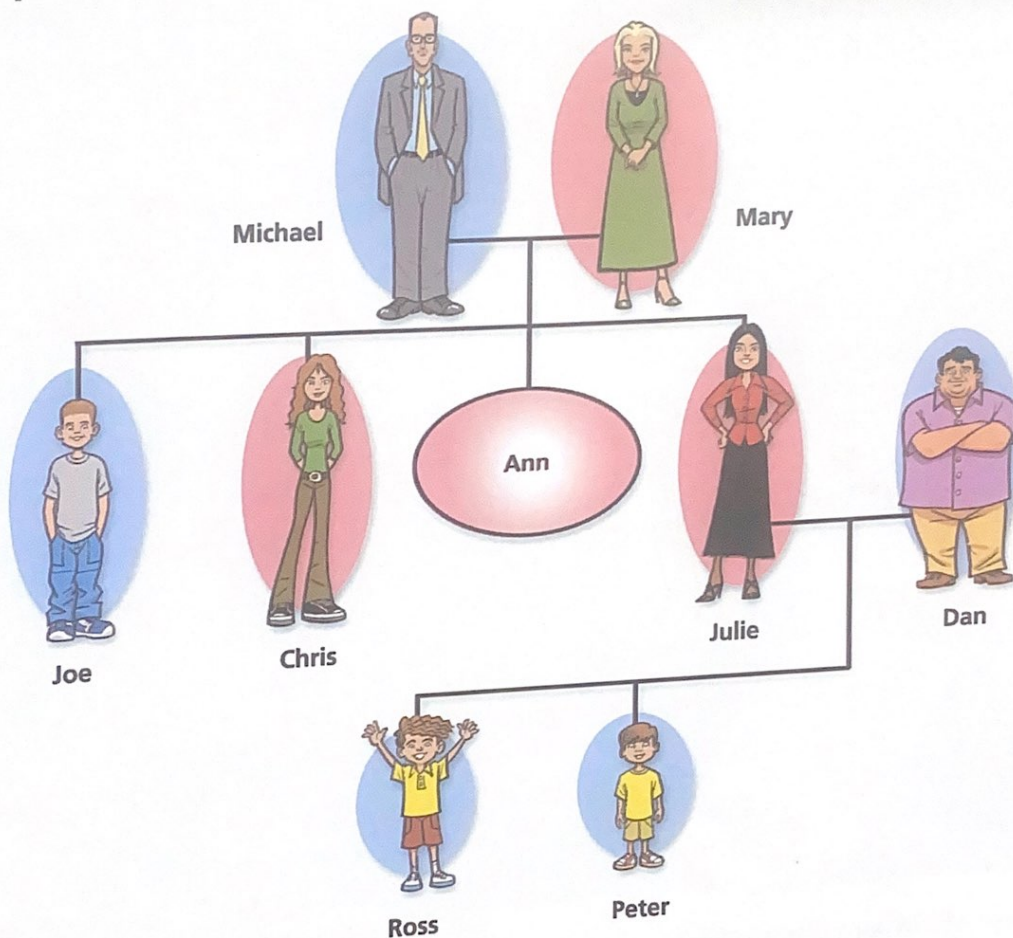


## PERSON TO PERSON STUDENT A

(Student A looks at this page. Student B looks at page 107.)

**Part 1** Look at Ann's family tree. Look at each family member and think of how you can describe each person's age, appearance, hair, clothing, and family relationship.

**Part 2** Your partner also has a family tree. There are ten differences between the two family trees. Ask questions to find the differences. Don't look at your partner's page.



**Part 3** Write sentences about the differences between the two family trees.  
Example: My tree has one younger brother, but my partner's tree has...

### Now Try This

Write sentences about the differences between your family and your partner's family.